



**ONE POUND IN THE HOOF:** That's the weight of this Reserve Grand Champion Steer at the Chelsea Fair. The steer, raised by Don Trinkle, right, had a starting weight of 965 pounds and was purchased for \$110 per pound by the Wolverine Bar Lounge of Chelsea. Don, 16, is the son of Mr. and Mrs. Charles Trinkle, 9631 Trinkle Rd. He is president of the Chelsea Steer Club and is a junior at Dexter High school where he wrestles and plays football.



**WENDY WOLFGANG** displays her Reserve Champion lamb to David and Jon Lane, sons of Dr. and Mrs. W. C. Lane. Lane Brothers bought the lamb for \$162.40.



**GRAND CHAMPION STEER** raised by Rodney Schneider, left, was sold to Gene Shoemaker of Jiffy Market at \$1.50 per pound for a total of \$1,455.

#### WEATHER

9 a.m.	12 p.m.	3 p.m.	6 p.m.	9 p.m.
74	78	81	84	80
74	78	81	84	80
74	78	81	84	80
74	78	81	84	80
74	78	81	84	80

# The Chelsea Standard

#### QUOTE

"Work consists of whatever a body is obliged to do, and play consists of whatever a body is not obliged to do."  
—Mark Twain.

ONE HUNDRED-FOURTH YEAR—No. 12

14 Pages This Week

CHELSEA, MICHIGAN, THURSDAY, SEPTEMBER 6, 1973

15c per copy

SUBSCRIPTION: \$4.00 PER YEAR

## Livestock Sale At Fair Rated Very Satisfying

A grand total of \$23,720.40 was laid out Thursday evening when the Chelsea Community Fair livestock auction took place on the fairgrounds. As was expected, prices were up from last year.

Rodney Schneider's Grand Champion steer was the first to go on the block. This 970-pound beauty brought \$1.50 per pound for a sale price of \$1,455. Jiffy Market was the buyer. Wolverine Bar was the high bidder when Don Trinkle's Reserve Champion steer came up for sale. It was worth \$1.10 per pound while last year's reserve champion brought only 67 cents per pound. Carolyn Ehnis' Grand Champion Market Hog brought \$1.25 a pound, which was bid by Michigan Livestock Association. The Reserve Champion hog weighed more, 215 pounds as opposed to the champion's 205 pounds, but cents per pound making the sale price \$182.75. Gordon McCalla was the owner.

Kathy McCalla raised the Grand Champion Pen Market Hogs to a weight of 655 pounds. Burgett Farms bought those animals for 61 cents per pound. Gordon McCalla was owner of the runner-up in that division. His Reserve Champion Pen Market Hogs brought 57 cents a pound. Chelsea State Bank bought them.

The Grand Champion Lamb, owned by Steve Grau, was bought by Manchester Food Locker for \$1.60 a pound. Wendy Wolfgang's Reserve Champion lamb was worth \$1.45 a pound. Lane Brothers paid the total \$162.40.

The other owners of steers, the steer's weight, the buyers, the price per pound, and the total sale price are as follows: Dan Heydlauff, 985 pounds, Mark IV Lounge, 80 cents, \$788; Doug Lesser, 835 pounds, Chelsea State Bank, 77 cents, \$642.95; Danny Grau, 910 pounds, Farmers' Supply, 83 cent, \$755.30; Janice Hopkins, 855 pounds, Roberts Trucking, 78 cents, \$666.90; Duane Trinkle, 900 pounds, Guenther Excavating, 75 cents, \$675; Lawrence Wacker, 825 pounds,

Chelsea Grinding, 70 cents, \$577.50; Tom Wacker, 955 pounds, Ann Arbor Federal, 79 cents, \$754.45; Mark Lesser, 770 pounds, Schump, 75 cents, \$577.50; Sue Heydlauff, 900 pounds, Chelsea Lumber, 75 cents, \$675; David Lesser, 830 pounds, Inverness Inn, 74 cents, \$614.20; Art Sias, 985 pounds, Dr. W. Lane, 82 cents, \$791.30; Danny Trinkle, 825 pounds, Chelsea Milling Co., 78 cents, \$642.75.

Debbie Clark, 920 pounds, Klumpp Brothers, 77 cents, \$708.40; Darrell Trinkle, 860 pounds, Lloyd Bridges, 78 cents, \$670.80; Karen Trinkle, 905 pounds, Dale Krull, 80 cents, \$724; Bob Herrst, 880 pounds, Manchester Food Locker, 70 cents, \$616; David Trinkle, 955 pounds, Slocum Construction, 85 cents, \$811.75.

Niel Bollinger, 785 pounds, Wallace Wood, 79 cents, \$620.15; Kathy McCalla, 915 pounds, Harold Sias, 81 cent, \$741.15; Tracy Lewis, 720 pounds, Huron Valley Poured Walls, 77 cents, \$554.40; Kathy Trinkle, 955 pounds, Lloyd Bridges, 80 cents, \$764; Margaret Lewis, 740 pounds, Washtenaw Crop Service, 80 cents, \$592; Debbie Gross, 855 pounds, Chelsea Milling Co., 82 cents, \$701.10; Tim Gross, 885 pounds, Pat Dittmar, 79 cent, \$669.15.

Other owners of hogs, the weight, the buyer, the price per pound and the total sale price are as follows: Tim Grau, 6th place individual, 235 pounds, Frisinger Realty, 58 cents, \$136.30; Carolyn Ehnis, third-place pen, 405 pounds, Trinkle Brothers, 56 cents, \$228.80; ninth-place individual, 240 pounds, Michigan Livestock, 55 cents, \$132; Mary Ann McCalla, fourth-place pen, 605 pounds, Harold Trinkle, 56 cents, \$338.80.

Duane Fiegel, 10th-place individual, 85 pounds, Washtenaw Crop Service, 58 cents, \$111.30; Jane Ewald fifth-place pen, 620 pounds, Michigan Livestock, 55 cents, \$341; Mark Lesser, 11th-place individual, 225 pounds, Inverness Inn, 64 cents, \$144; Karen

## School Lunch Prices Remain Same for Now

The price of a Type A lunch in the Chelsea School District will remain the same (35 cents) for the start of the 1973-74 school year. Hot lunch authorities have recommended that prices be increased to cover the added costs of raw food supplies.

When new bid prices are available, the price will be reviewed and all factors will be considered in making the decision. Vandallan and destruction of trays and silverware is a factor that will figure in the final decision. Parents are urged to remind their children to take proper care of school equipment.

The price of milk, purchased separately from a lunch, will be 8 cents per half pint. This increase is due to the fact that the federal government is no longer reimbursing the district for part of the cost of the milk. Because of difficulties in obtaining food supplies as ordered, menus will not be published during the first week or two of the school year. As soon as supplies are available, to allow for adequate planning, the menus will be published.

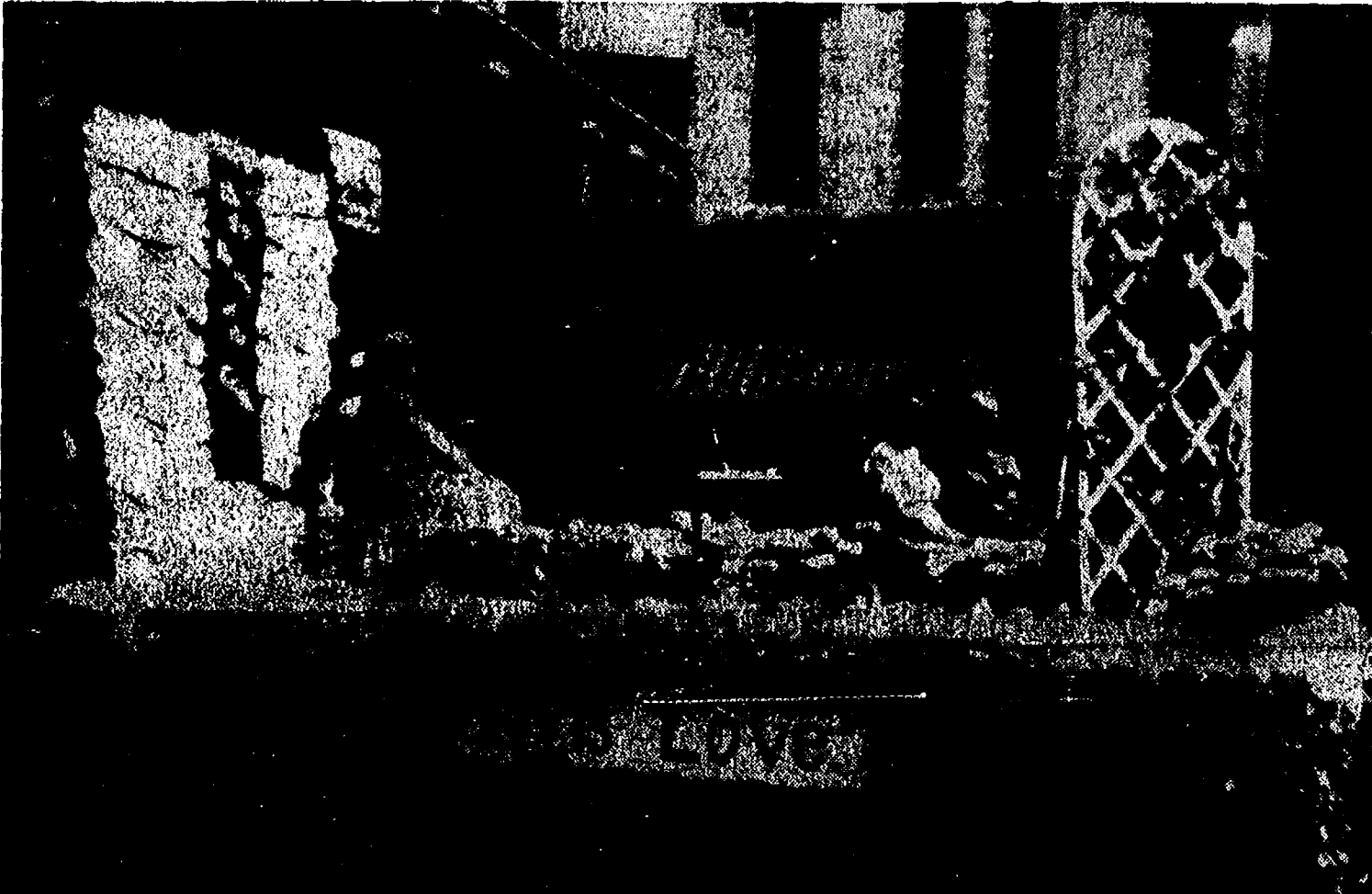
## Tractor Pull Draws Total of 108 Contestants

In spite of a brief shower Friday morning, the tractor pull was one of the most successful ever held at Chelsea Community Fair, says Paul Bollinger, one of the chairmen of the event.

Along with George Merkel, Bollinger watched a record number of tractors register for the event. 103 vehicles ranging in weight from under 4,000 to 14,000 pounds, entered this year compared to the 88 competing a year ago.

The rain Friday morning made the going slippery for a while, but soon the ground was dry enough to continue the competition.

Starting out the event were the relatively small tractors ranging up to 4,000 pounds. Ken McCalla drove a Ford tractor to the first place in that event. He pulled 281 percent.



**LAST YEAR'S WINNER** in the adult division, the Chelsea United Methodist Home, submitted this garden-scene float entitled "God is Love," and again claimed first prize.



**OUR WORLD IS JUST A CAROUSEL** was the free-wheeling theme of the Junior Class of Chelsea High school, which included Fair Queen Jodi Daniels as the central interest of its carousel.

## Fair Termed 'Successful' In Every Way

### Attendance, Profits at All-Time Record Highs

The relentless heat and mosquitoes that marked this year's Chelsea Community Fair did not keep the crowds away. Last year's record breaking attendance was matched again this year.

As they poured into the fairgrounds, visitors deposited \$5,958 at the gate. Other revenue was gathered at the Fair Kitchen, which prospered under the direction of "Red" Balogh. The approximate figures fair treasurer John Wellnitz was able to supply The Chelsea Standard at press time showed the kitchen had cleared \$9,243.

This sum, which does not include what will be gained when the surplus food is sold, nearly matches last year's profit in the kitchen.

Figures concerning the money brought in by the steer raffle and the tractor competition were not available at press time.

The board's cut of the profits made off of Ingalls Amusements came to \$5,084.

Another large money-making attraction at the fair was the annual livestock auction which brought in \$23,720.40 for thousands of pounds of meat on the hoof. Of that, \$18,803 was laid out for steers and \$3,231.85 went for hogs. The lambs brought a total of \$1,682.55.

The combined sale was considerably more lucrative than a year ago when the prize winning animals and the lesser beasts were worth only \$19,436.09.

The parade, as always, was a major attraction. As the brightly colored floats glided down Main St., they were judged by Dr. James Herberson of Ann Arbor, Barbara Creal of Ann Arbor and Dr. Gorton Riethmiller.

Their choice for first place in the junior division was the junior class float, "Our World Is Just a Carousel." Thus, the class was battling a thousand with both a winning float and a winning Queen candidate, Jodi Daniels.

Second place in the junior division went to the senior class. They constructed a gigantic shoe and perched the old lady who lived there on the toe. The sophomore class was third - prize winner with its float which proclaimed "Chelsea Has Good Taste."

In the adult division, the Chelsea Methodist Home took top honors for the third time in three years. Its newest winner was created in the theme "God is Love" and was ridden by the Home's king and queen. Mr. and Mrs. George Spitzer. The couple that was runner-up in the election, Mr. and Mrs. Bert Pearson, also rode the float.

(Continued on page eight)

## Horse Show Winners Listed

The horse shows Wednesday and Saturday at the Chelsea Community Fair produced a long list of winners. Riders came from all over the county to participate.

The show Wednesday was kicked off with the showing of suckling colts. Dawn Kilpatrick of Grass Lake was first; Kathy Hartman of Milan was second; Andy Ford of Chelsea took third and Gary Haas of Dexter was fourth.

Yearling colts were shown in the second class. Kathy Hartman was back again in that event, earning a first place. Terry Williams of Brooklyn was second.

Class No. 3 was two-year-old mares in halter. Winners were Launne Haar, Dexter, first; Dennis Shepherd, Grass Lake, second; Angie Snyder, Manchester, third; and Cindy Snyder, Chelsea, fourth.

Patty Carlson took the blue ribbon in the fourth class by showing her two-year-old gelding. In Class No. 6, in which participants showed their three-year-old and over mares, Kathy Hartman was again the first place ribbon winner. Magdalen Haas of Dexter was second; Laurine

and Janet Sibley of Chelsea was fourth.

Again it was Kathy Hartman who won when three-year-old and over geldings were shown in Class No. 6. In second place was Sheryl Sobock of Chelsea, Judy Ward of Chelsea was third and

Patty Carlson of Manchester was fourth.

Class No. 7 was for three-year-olds and over grades. Winners were Robin Knepper, Ann Arbor, first; Karen Niemi, Dexter, second; Denise Kilpatrick, Grass Lake, third and

(Continued on page six)

## Driver's Licenses Available in Chelsea

A full-service branch of the Michigan Secretary of State's office will open in Chelsea tomorrow, Sept. 7. The location, 107 W. Middle, was formerly the site of a bakery and has been vacant for nearly a year.

This will mark the first time Chelsea residents have enjoyed the convenience of a full-service branch in town. Up until June, there was a limited service branch in Wallace Wood's insurance office on Main St., but the village has been completely without an office

The new office will handle everything from issuing license plates and driver's licenses to processing titles and lottery claims.

The manager is Robert Marsh, a civil service employee who will divide his time between Chelsea and Jackson. He explains that the office will be open on Mondays, Wednesdays and Fridays from 8:30 a.m. to 5 p.m. at first. The hours may be extended if business warrants it. Marsh will be assisted by two



**PARADE MARSHAL:** Presiding over the parade Saturday afternoon was Joe Merkel, who was chosen to be the parade marshal because of his dedicated service on the fair board for many years.









THREE PULLERS OF MACHINERY don't in-  
stantly show kids sitting atop the biggest  
tractors of them all at the tractor pull Friday night.  
They showed their way in the top four places.  
First place winner was Charles Schauble (left),  
who drove a John Deere and pulled 244 percent.  
Schauble came with his father at 8063 Pleasant  
Lake Rd. in second place was John Ruhlig (center)

and from right) of 11591 Colby Rd., Dexter. His  
Allis-Chalmers pulled 239 percent. Richard Jedele,  
who entered the pull for the first time at the mini-  
mum age of 14 a year ago, was third. His John  
Deere pulled 235 percent. He hails from Saline.  
Lloyd Grau (right), who rode an Oliver, pulled 232  
percent for fourth place.

## Tractor Pull Entries Show 108 Machines

(Continued from page one)

He was followed by Steven  
Gross who first tied with Lloyd  
Rietmiller for the next prize.  
Gross on a Ford and Rietmiller  
on an International both pulled  
250 percent. The judges measured  
the inches pulled to give the sec-  
ond place to Gross.

In the 4,001 to 6,000 pound  
category, Harold Haeussler on a  
Massey-Ferguson took top honors.  
He pulled 275 percent, leaving  
the competition far behind. Mark  
Ruhlig was second on an Allis-  
Chalmers tractor that was cap-  
able of pulling 233 percent.

Paul Zahn was in third place  
on his Case tractor after pulling  
219 percent and Mark Weldmeyer  
on an Allis-Chalmers took fourth  
with 218 percent.

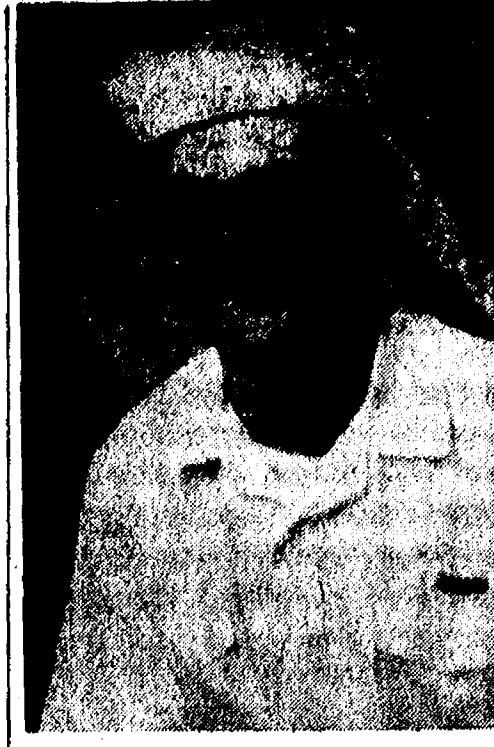
Ralph Dibble rode an Oliver

machine to the first-place prize  
in the 6,001 to 8,000 pound divi-  
sion. His 255 percent pull was  
closely rivaled by Tim Bauer's  
Ford which pulled 249. Frank  
Sweeney on an Allis-Chalmers  
pulled 240 percent for third place  
and Roy Wiedemeyer on a Mas-  
sey-Ferguson was fourth with 230.

The big boys topped off the  
event Friday night in front of a  
packed grandstand. Massive ma-  
chines ranging in weight from  
1,001 to 14,000 competed in the  
last division and Charles Schauble  
came out on top.

Schauble rode a John Deere to  
a 244 percent pull. John Ruhlig  
on an Allis-Chalmers was second  
with a 239 percent showing. Tak-  
ing third was 15-year-old Richard  
Jedele of Saline. His John Deere  
pulled 235 percent of its own  
weight. Lloyd Grau was fourth  
on an Oliver tractor which pulled  
232 percent.

As Paul Bollinger said, "Now  
we can look forward to another  
good event next year."



STEVEN R. HALE

Pinckney Area Youth  
Graduates from Navy  
Recruit Training

Great Lakes, Ill. — Navyman  
Steven R. Hale, son of Mr. and  
Mrs. Roger Hale of 11205 Patter-  
son Lake Dr., Pinckney, Mich.,  
graduated from recruit training at  
the Naval Training Center here.

### TEARLESS?

One of the big food companies  
is working on a tearless onion—  
and they just might do it. They've  
already given us tasteless bread.



FINAL RESULTS ARE IN, and County Agri-  
cultural Agent Bill Ames prepares to make the  
announcement of the winners in the Tractor Pull.  
Extension Director Don Johnson, Judge Fred Mills,

and two unidentified onlookers re-check the results.  
This hard-working team was on duty at the tractor  
pull from 10 a.m. Friday until the end of the heavy-  
weight contest at 1 a.m. Saturday.

## CONSUMERS CORNER

### NEW TEXTURES AND COLOR FOR WINDOW TREATMENTS

Fashions in house furnishing  
change each year, just as fash-  
ions in clothing do. Sometimes  
these changes are subtle; some-  
times not.

Persons shopping for draperies  
this year will find that colors are  
softer and lighter. The tradition-  
al green has been replaced by a  
crisp, celery hue; the golds are  
stepping aside for yellows, such  
as banana, creamy beige and  
shades of melon.

European influence is noticeable  
in 1973 window fashions. "Hand  
printed" designs are popular, and  
so is the "lacy" look.

Sheers are common. But this  
season the eyelet look may be  
woven right into the fabric, rather  
than created in a later step.

Draperies made from glass fi-  
bers continue to top the consumer  
preference list. And, thanks to  
new methods of manufacturing,  
glass window treatments are bet-  
ter than ever.

Glass draperies are no longer  
brittle because the diameter of  
the fibers has been cut by half.  
And the glass has been blended  
with acetate. Colors in glass fi-  
bers are more intense and lacy tex-  
tures are now possible. Glass fi-  
bers seem to have come of age.

Of all hemophiliacs, 88.3 percent  
are under 25 years of age. Hemo-  
philia of Michigan, supported  
through contributions to local  
United Way campaigns is helping  
hemophiliacs of all ages through  
community facilities, blood recruit-  
ment and emotional support.  
Hemophilia of Michigan is a ser-  
vice of the United Way of Michi-  
gan.

Subscribe today to The Standard!

## Farmers Urged To Test Soil Order Fertilizer for Spring

Michigan farmers should test  
their soil this summer and order  
needed fertilizer early for spring  
delivery, says Eugene C. Doll,  
Michigan State University crop  
and soil science professor.

"Last spring farmers faced a  
commercial fertilizer shortage,"  
Doll says, "and with the natural  
gas situation and the usual rush  
in the spring to buy fertilizer,  
there may be a shortage next  
spring."

"We are emphasizing that farm-  
ers get their soil tested now,"  
Doll says, "because about 25 per-

cent of the recent soil samples for  
corn show little or no need for an  
application of phosphorus, while  
15 to 20 percent need a heavy  
application."

Recent soil samples for corn at  
the MSU soil testing laboratory  
also show that 15 percent don't  
need an application of potash  
while 30 percent need a heavy ap-  
plication and one-half of all the  
samples need lime.

By testing soil now, Doll says,  
farmers will know right away  
what kinds of fertilizer they need,  
and they'll be able to order this

fall and beat any shortage next  
spring.

Soil sample boxes may be pur-  
chased from local county Co-opera-  
tive Extension offices.

And for testing, Doll advises  
farmers to take the sample to  
their local county agricultural ex-  
tension agents or send it directly  
to Soil Testing Laboratory, 108  
Soil Science Bldg., Michigan State  
University, East Lansing, 48824.

### ANIMAL LANGUAGE?

Did you hear the one about the  
rich old lady who sent her dog to  
the University to learn a foreign  
language? Her friends thought  
she was crazy, until they saw the  
dog arch its back and say:  
"Meow!"

## LYNDON TOWNSHIP ACTUAL USE REPORT Of Federal Revenue Sharing Funds

The government of Lyndon Township, Michigan has used its revenue sharing payment for the period beginning Jan. 1, 1973 and ending June 30, 1973 in the following manner based upon a total payment of \$5,794. (Account No. 23-3-981-998). Form No. 323 filed with Department of the Treasury, Office of Revenue Sharing, 1900 Pennsylvania Avenue, N.W., Washington, D.C. 20226

(L) DEBT. How has the availability of revenue sharing funds affected the borrowing requirements of your jurisdiction?

- ☐ Avoided Debt Increase ☒ No Effect  
☐ Lessened Debt Increase ☐ Too soon to predict effect.

### OPERATING/MAINTENANCE EXPENDITURES

Priority Expenditure Categories (A)	Actual Expenditures of Existing Services (B)	Percent Used For New or Expanded Services (C)	Percent Used For Existing Services (D)
1 Public Safety (Roads)	\$3,606.83	100%	%
2 Environmental Protection	\$	%	%
3 Public Transportation	\$	%	%
4 Health	\$	%	%
5 Recreation	\$ 500.00	100%	%
6 Libraries	\$ 881.37	100%	%
7 Social Services for Aged & Poor	\$	%	%
8 Financial Administration	\$	%	%
9 Total Actual Operating/Maintenance Expenditures	\$4,488.00		

(N) CERTIFICATION (Please Read Instruction "F")

The news media have been advised that a complete copy of this report has been published in a local newspaper of general circulation. I have records documenting the contents of this report and they are open for public and news media scrutiny.

Additionally, I certify that I am the chief executive officer and with respect to the entitlement funds reported hereon, I certify that they have not been used in violation of either the priority expenditure requirement (Section 103) or the matching funds prohibition (Section 104) of the Act.

(O) TRUST FUND REPORT  
Revenue Sharing Funds Received thru June 30, 1973

Interest Earned	
Total Funds Available	
Amount Expended	
Balance	

Thomas C. Lewis  
Supervisor

Date Published: Thursday, September 6, 1973.  
Name of Newspaper: The Chelsea Standard.

(M) TAXES. In which of the following manners did the availability of Revenue Sharing Funds affect the tax levels of your jurisdiction? Check as many as apply.

- ☐ Enabled reducing rate of major tax  
☐ Prevented increase in rate of major tax  
☐ Prevented enacting a new major tax  
☐ Reduced amount of rate increase of a major tax  
☒ No effect on tax levels  
☐ Too soon to predict effect

### CAPITAL EXPENDITURES

Purpose	Actual Expenditures	Equipment	Construction	Land Acquisition	Debt Retirement
10 Multi-Purpose and General Govt.	\$	%	%	%	%
11 Education	\$	%	%	%	%
12 Health	\$	%	%	%	%
13 Transportation	\$	%	%	%	%
14 Social Development	\$	%	%	%	%
15 Housing & Community Development	\$	%	%	%	%
16 Economic Development	\$	%	%	%	%
17 Environmental Conservation	\$	%	%	%	%
18 Public Safety	\$	%	%	%	%
19 Recreation Culture	\$	%	%	%	%
20 Township Hall Imp.	\$1,306.00	100%	%	%	%
21 Other (Specify)	\$	%	%	%	%
22 Other (Specify)	\$	%	%	%	%
23 Total Planned Capital Expenditures	\$1,306.00				

# Jiffy market

Big Enough To

Serve You . . . Small Enough To Know You!

TOP VALUE STAMPS - GUARANTEED SATISFACTION - COURTEOUS SERVICE



## FULL LINE SUPERMARKET

BEER - WINE - LIQUOR  
LOTTERY TICKETS  
MARATHON GAS PUMPS  
AUTHORIZED  
FOOD STAMP STORE

Open 7 Days A Week

7 a.m. to 10 p.m.

Corner Sibley & Wecker Rds.  
PHONE 475-1701

Sale Prices Effective  
Thurs., Sept. 6 thru Sun., Sept. 9



### COUNTRY FAIR

WHITE BREAD . 4 1-Lb., 4-Oz. Loaves 99¢

RISDON'S HOMOGENIZED  
LO-FAT MILK . . . . . gallon 89¢

U. S. GRADE A WHITE  
FRESH EGGS . . . . . Med Size Doz. 69¢

MICHIGAN U. S. No. 1 SUNNY CREST FARMS  
POTATOES . . . . . Lb. Bag 69¢

FROSTIE, ROOT BEER, ORANGE, AND GRAPE CRUSH OR  
7-UP . . . . . Your Choice 12-Oz. Cans 6 69¢

CRISPY FLAKE OR HOME TOWN  
POTATO CHIPS . . . . . 12-Oz. Pkg. 49¢

ALL BRANDS & SIZES — CHECK OUR PRICES ANYWHERE!!  
CIGARETTES . . . . . Your Choice Per Carton \$3.39

U.S.D.A. CHOICE — All beef priced at March 29, 1973 retail prices.

BEEF ALL CUTS AVAILABLE  
Because of our high cost of buying and the continued government beef retail price freeze, all cuts will be limited in quantity to all customers.

BY GIVING  
TOP  
VALUE  
STAMPS  
WE SHARE

100

Worth 100 EXTRA

This coupon good for 100 Free Top Value Stamps with any purchase at JIFFY MARKET who gives Top Value Stamps. Coup. void after Sept. 2, 1973.

Limit one coupon to a customer per visit.  
(This offer void in any state or municipality where prohibited taxed or otherwise restricted.)

Top Value Stamps

CHELSEA'S JIFFY MARKET FREE COUPON

100

Mich. State Lottery Tickets - Fresh Meats - Produce - Groceries - Beer - Wine - Liquor



## AGRICULTURE IN ACTION

By Michigan Farm Bureau Staff Writer

### No TLC for Russian Machinery

Agriculture in Russia is a hard business—harder than in the United States. The Russian farmer has to work the land himself, and he has to take care of the machinery himself. The Russian farmer has to take care of the machinery himself. The Russian farmer has to take care of the machinery himself.

The Russian farmer has to take care of the machinery himself. The Russian farmer has to take care of the machinery himself. The Russian farmer has to take care of the machinery himself.

The Russian farmer has to take care of the machinery himself. The Russian farmer has to take care of the machinery himself. The Russian farmer has to take care of the machinery himself.

The Russian farmer has to take care of the machinery himself. The Russian farmer has to take care of the machinery himself. The Russian farmer has to take care of the machinery himself.

The Russian farmer has to take care of the machinery himself. The Russian farmer has to take care of the machinery himself. The Russian farmer has to take care of the machinery himself.

## Wanted...Girl Scout Leaders

### Assistant Leaders Wanted, Too.

Thousands of men and women have brightened their lives as well as the lives of others by becoming Girl Scout Leaders.

The Girl Scouts of the U.S.A. is open to all girls 7 through 17 who subscribe to its ideals as expressed in the Girl Scout Promise and Law. Founded in 1912 and incorporated in Washington, D.C., in 1915, it was chartered by the Congress of the United States in 1950.

If you can spare the time, you can become a Girl Scout Leader or Assistant Leader. Helpers wanted, too. To find out more, just mail the coupon below. For quick information, telephone your local Girl Scout Council.

Mail this coupon for free literature.

WILSON VALLEY GIRL SCOUT COUNCIL  
19 N. HAMILTON ST.  
YPSILANTI, MICH. 48197

Without obligation, please send free literature telling how I can become a Girl Scout Leader, Assistant or Helper.

Name \_\_\_\_\_  
Address \_\_\_\_\_  
City \_\_\_\_\_ State \_\_\_\_\_ Zip \_\_\_\_\_  
Telephone \_\_\_\_\_

## ASK THE GOVERNOR

by William G. Milliken

**Question:** Is anything being done in our state to stop all the drunk drivers from driving on our streets and highways?

**Answer:** Drunk driving continues to be one of the most critical problems in the field of traffic safety in Michigan today, with national estimates maintaining that more than 50 percent of all traffic fatalities are in one way or another alcohol-related.

Michigan has taken a number of steps in recent years to deal with the problem. For example, we have initiated an alcohol detection program which has been instrumental in increasing arrests of drunk drivers. Our experience reflects an increase from under 5,000 arrests for driving under the influence of liquor in 1967 to more than 35,000 arrests for a similar charge in 1972.

Recently, I signed Senate Bill 24—one of my legislative priorities in traffic safety for this year. This legislation prohibits the transportation or possession of alcoholic liquor in a container which is uncapped in the passenger compartment of a vehicle in the state.

That legislation was long overdue, and will give law enforcement agencies the tools necessary to cut down on the number of mobile drinking parties in our state.

I am also working hard to achieve legislative passage of legislation which would require drivers involved in accidents in which a personal injury has occurred to submit to the provisions of the implied consent law.

I believe that all of these steps will help to improve our state's approach to the drinking driver problem, as well as our overall traffic safety program.

**Question:** Earlier this year, with the floods and all, there was a lot of talk about projects to control erosion on the Great Lakes. Since then, I have not heard much. Is anything happening?

**Answer:** Yes, several steps are underway to develop a shoreline erosion control program, including demonstration projects. At my request, the legislature earlier this year provided a \$370,000 supplemental appropriation for shoreline erosion control projects. These funds are now being used for demonstration projects which are either underway or being developed.

developed at five locations, all on public property. They include projects at Michiana in Berrien County, Marquette, Mears Park near Pentwater, and Ludington State Park.

The demonstration program was designed by the Water Resources Commission to determine the feasibility of various erosion control methods, including the dredging of sand to build artificial beach barriers.

Additionally, in conjunction with the Army Corps of Engineers, the Soil Conservation Service, Michigan State University, and the University of Michigan, the Water Resources Commission is sponsoring a series of workshops around the state to provide interested citizens with the best current advice on property protection measures.

And finally, the state has contracted with the University of Michigan for a study of existing shore protection concepts and an evaluation of the performance of present and proposed demonstration works.

**Question:** I read that you recently signed a bill to increase the cost of the Sportsman's License from \$18.00 to \$22.50. Where does that extra \$4.50 go?

**Answer:** Michigan's unique Sportsman's License permits a sportsman to participate in fishing, trout and salmon fishing, small game hunting, deer gun hunting, bow and arrow hunting, bear hunting, and trapping for a full year with a single license. The bill I signed increased the price of that license from \$18.00 to \$22.50 and provides that the entire \$4.50 increase be placed in the State's Fish and Game Fund.

All money in the Fish and Game Fund is used for sportsman's programs—including hunting and fishing management, deer habitat improvement, fish stocking, hunting and fishing research, law enforcement, payment of taxes on lands which the state has purchased, and several other related services. Thus, all of the money from the increase in the fee charged for the Sportsman's License—estimated by the Department of Natural Resources to be approximately \$348,000—will be used to provide better hunting and fishing.

## from HISTORY'S SCRAPBOOK

DATES AND EVENTS FROM YESTERYEARS

The London Blitz began as the Nazis bombed London on September 7, 1940.

On September 8, 1935, Senator Huey Long of Louisiana was shot.

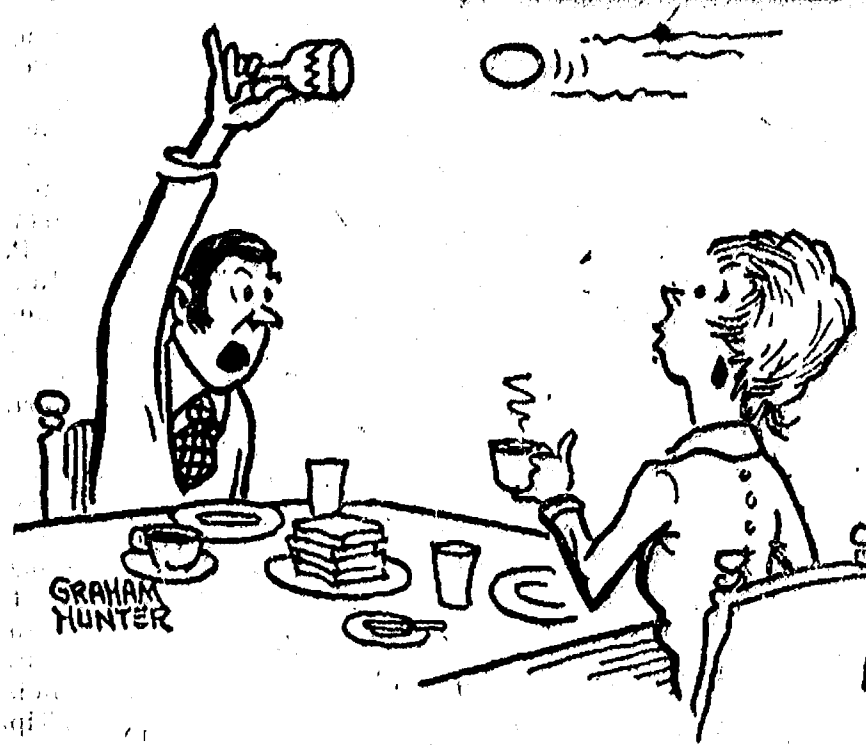
California became the 31st state admitted into the Union, September 9, 1850.

Austria-Hungary's Empress Elizabeth was assassinated in Geneva on September 10, 1898.

George Washington's troops were badly defeated by the British at the Battle of Brandywine, September 11, 1777.

On September 12, 1609, Henry Hudson, entered the river now named after him.

## LAFF OF THE WEEK



"How much more would we have to pay her to serve the eggs properly?"

## September Packed With Events To Draw Vacationers, Tourists

Lansing—September enters on a holiday packed with happy activity and the promise of a happy mood for the remainder of the month's events, according to the Michigan Tourist Council.

To "frisbee flingers" everywhere—no you have not missed the International Frisbee Tournament. This year's classic will be held Saturday and Sunday, Sept. 1-2, at Atlantic Mine (just south of Houghton) in the Upper Peninsula. Certainly one of Michigan's most unique events, the International Frisbee Tournament could be described as... an indescribably good, good time. Sept. 1-2 are also the dates of the Drag Boat Races on the Au Sable River at Oscoda and the 12th annual Top of Michigan Aquathlon at Cheboygan.

Bronc busting, bulldogging and bareback riding action will highlight the annual Sparta Rodeo, Sept. 1-3. And, on Monday, Sept. 3, Sparta's annual Labor Day Flea Market will be attracting "junkies," collectors and "antiquers" from far and near. Sept. 1-3, at Romeo, a spectacular floral parade, beauty pageant and a variety of festivities will be some of the attractions of the Peach Festival. Jones—the roaring 20's town—will hold an Art Fair and Flea Market.

Another of Michigan's one-of-a-kind events is, of course, the annual Mackinac Bridge Walk from St. Ignace to Mackinaw City on Labor Day. Last year, some 25,000 hearty hikers joined Governor William Milliken for the 4½ mile jaunt.

Sept. 6-9 will be Good Old Days at Richmond with good old ice cream socials, square dancing and musical comedy among the things to do and see. Plus, a modern day MISA sanctioned snowmobile drag race on a grass strip.

Fabulous "livvers" of pre-1925 vintage will compete for blue ribbons and prizes in races and contests at the Old Car Festival, Greenfield Village, Dearborn, Sept. 8-9. Dixieland bands, automotive crafts and exhibits will help recall America's early days of motoring.

Marshall, Michigan's 10th annual Historic Home Tour will be held Sept. 8-9. The 1860 Capitol Hill School and Honolulu House Museum and 1939 "Governors Mansion" will be among the six historic homes open to the public.

The Michigan PGA Championship tees off Sept. 9 at Davison Country Club, Davison and plays through Sept. 11.

Sept. 12-16 are the dates of this year's Fall Antique Show and Sale, Light Guard Armory, Detroit. Fine antiques and rare collector's items will be exhibited by dealers from some 23 states.

Scottville's Harvest Festival and Mt. Clemens' Farm City Festival are both scheduled for Sept. 13-15. Portland will hold their annual Art Festival and Flea Market Sept. 14-15. Sept. 14-16 Petoskey promises food, fun and entertainment by the Teutonia Dance Group from Windsor at their Octoberfest, and the Michigan State Potato Festival will hold forth at Edmore. Hex signs, soap and can-

## The Safety Valve

**Question:** Is it legal for passengers to consume alcoholic beverages in a vehicle going down the highway? W. A. L., Algonac.

**Answer:** No. No alcoholic liquor shall be consumed on the public highway.

**Question:** My farmer friend is real proper with his slow moving vehicle emblem on the back of his farm equipment, but that's no excuse for those dim headlights! R. O. B., West Branch.

**Answer:** There is a special provision in our vehicle lighting equipment requirements for slow moving vehicles which allows them to be operated (during specific hours of darkness) when equipped with two lighted lamps on the front capable of revealing persons and objects 75 feet ahead. Provided, however, that at no time shall that vehicle be operated at a speed in excess of 20 miles per hour.

**Question:** My boy friend's new motor vehicle operator license doesn't even include information on his height and sex any more. His long hair and big steel-rimmed glasses hide enough of his face he could almost pass for a girl! Does a police officer who stops him on the highway have any way to determine for sure what gender he really is? L. R. S., Stephenson.

**Answer:** Although the new law effective Jan. 9, 1973, erases that physical description information from the license itself, the Secretary of State advises us that physical description will still be re-

quired on the license application and that this information will be available to all police officers on the law enforcement information network.

**Question:** Does the law require people operating emergency vehicles on an emergency run to carry an operator's license with them? J. W., Bridgeport.

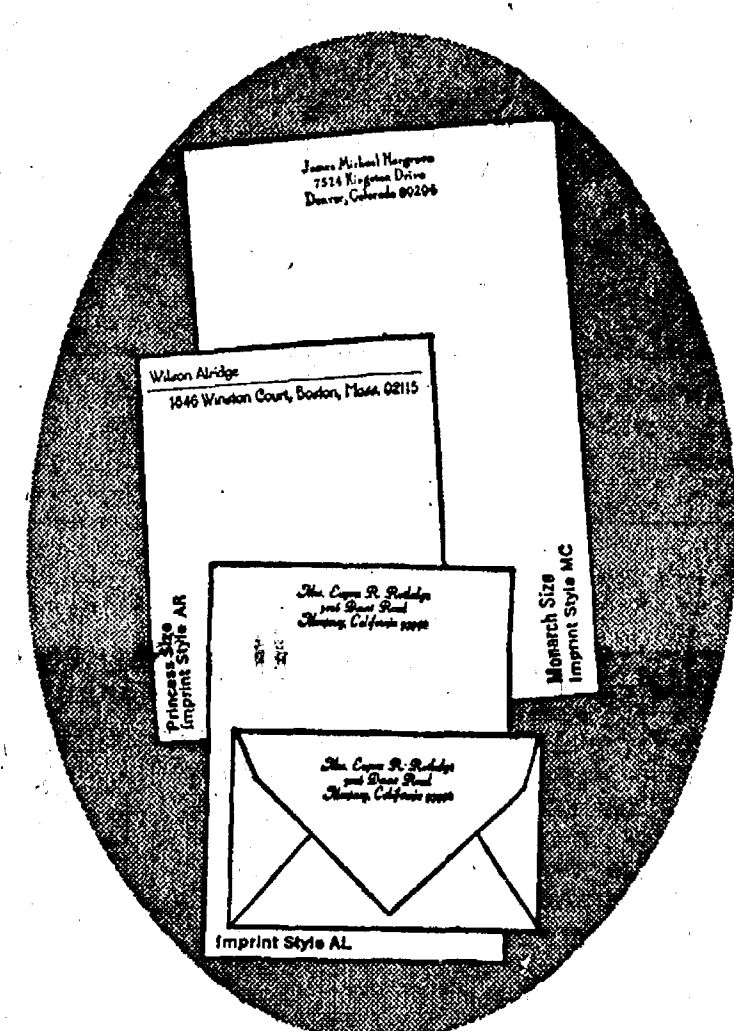
**Answer:** "Notwithstanding any provision of law to the contrary, any fireman while responding to or returning from a fire alarm or while actually engaged in fighting a fire shall be exempt from carrying on his person any certificate, license or any paper or writing required by law to be on his person or presented upon demand of a peace officer."

Veterans thinking of selling homes bought with GI loan guarantees are urged to get a "release of liability" from the VA if the loan is assumed by the buyer. Unless a veteran asks for and receives a "release from liability" from the VA office which guaranteed his home loan, he will be liable for payment in the event of default by the purchaser. Release from liability does not automatically restore GI loan entitlement, for entitlement is restored only if compelling reasons were present when selling the property.

He who runs for political office may read things about himself that he never suspected.

According to history, the use of cheese was pictured on stone tablets in 4,000 B. C.

## 1/2 Price Sale



Rytex Personalized Stationery

September Sale

Hand Craft Vellum

... this month only \$5.00 (regularly \$10.00)

The versatile letterpaper.

Ideal for the full range of correspondence—from warm-hearted notes to formal letters. This quality paper suits pen or typewriter. Popular with men and women. Paper Color Choice: white, blue or grey. Imprint Styles: AL, AR or MC. In blue or grey ink.

150 princess sheets, 100 matching envelopes or 100 monarch sheets, 100 matching envelopes.

### Bonus Value

An additional 50 matching unprinted sheets for use as second pages (regularly \$1.50) now only \$1.00 with your order.

## The Chelsea Standard

MAIL ORDER COUPON

THE CHELSEA STANDARD  
CHELSEA, MICHIGAN 48118

VERSATILE HAND CRAFT VELLUM: double quantity boxes at \$5.00 per box

SPECIAL BONUS (check) 50 extra Plain sheets (with each box) at \$1.00 per box

Imprint Name \_\_\_\_\_

Street \_\_\_\_\_

City \_\_\_\_\_ State \_\_\_\_\_ Zip \_\_\_\_\_

Princess Size Sheets:

☐ White (1000) ☐ Blue (1050) ☐ Grey (1060)

Monarch Size:

☐ White (1200) ☐ Blue (1250) ☐ Grey (1260)

Check Choice: Imprint Style ☐ AL ☐ MC ☐ AR ☐ Blue ☐ Grey

Ordered by: \_\_\_\_\_

Street \_\_\_\_\_ Apt. \_\_\_\_\_

City \_\_\_\_\_ State \_\_\_\_\_ Zip \_\_\_\_\_

Account No. \_\_\_\_\_ Tel. \_\_\_\_\_

☐ Charge ☐ Check or M. O. enclosed \$ \_\_\_\_\_  
Sorry, no C.O.D.'s Please include Michigan State Sales Tax

## DEXTER TOWNSHIP ACTUAL USE REPORT Of Federal Revenue Sharing Funds

The government of Dexter Township has used its revenue sharing payment for the period beginning Jan. 1, 1972 and ending June 30, 1973 in the following manner based upon a total payment of \$9,443. (Account No. 23-3-981-994). Form No. 3231 filed with Department of the Avenue, N.W., Washington, D.C., 20226

(L) DERT. How has the availability of revenue sharing funds affected the borrowing requirements of your jurisdiction?

☐ Avoided Debt Increase ☒ No Effect  
☐ Lessened Debt Increase ☐ Too soon to predict effect

### OPERATING/MAINTENANCE EXPENDITURES

Priority Expenditure Category (A)	Actual Expenditures (B)	Percent Used For Existing Services (C)	Percent Used For New or Expanded Services (D)
1 Public Safety (Local Roads) \$4,566.00		100%	100%
2 Environmental Protection		%	%
3 Public Transportation		%	%
4 Health		%	%
5 Recreation \$ 300.00		%	100%
6 Libraries		%	%
7 Social Services for Aged & Poor		%	%
8 Financial Administration		%	%
9 Total Actual Operating/Maintenance \$9,443.00			

### (N) CERTIFICATION (Please Read Instruction 17)

The news media have been advised that a complete copy of this report has been published in a local newspaper of general circulation. I have records documenting the contents of this report and they are open for public and news media scrutiny.

Additionally, I certify that I am the chief executive officer and, with respect to the entitlement funds reported herein, I certify that they have not been used in violation of either the priority expenditure requirement (Section 103) or the matching funds provision (Section 104) of the Act.

### (O) TRUST FUND REPORT

Revenue Sharing Funds Received thru June 30, 1973 \$9,443.00

Interest Earned \$0.00

Total Funds Available \$9,443.00

Amount Expended \$9,443.00

Balance \$0.00

John M. Tandy  
Supervisor

(M) TAXES. In which of the following manners did the availability of Revenue Sharing Funds affect the tax levels of your jurisdiction? Check as many as apply.

☐ Enabled reducing the rate of major tax.  
☒ Will prevent increase in rate of major tax  
☒ Prevented enacting a new major tax  
☐ Reduced amount of rate increase of a major tax  
☐ No effect on tax levels  
☐ Too soon to predict effect

### CAPITAL EXPENDITURES

Purpose (E)	Actual Expenditures (F)	Equipment (G)	Construction (H)	Land Acquisition (I)	Debt Retirement (J)
10 Multi-Purpose and General Govt.		%	%	%	%
11 Education		%	%	%	%
12 Health		%	%	%	%
13 Transportation		%	%	%	%
14 Social Development		%	%	%	%
15 Housing & Community Development		%	%	%	%
16 Economic Development		%	%	%	%
17 Environmental Conservation		%	%	%	%
18 Public Safety		%	%	%	%
19 Recreation Culture		%	%	%	%
20 Other (Specify)		%	%	%	%
21 Other (Specify)		%	%	%	%
22 Other (Specify)		%	%	%	%
23 Total		%	%	%	%

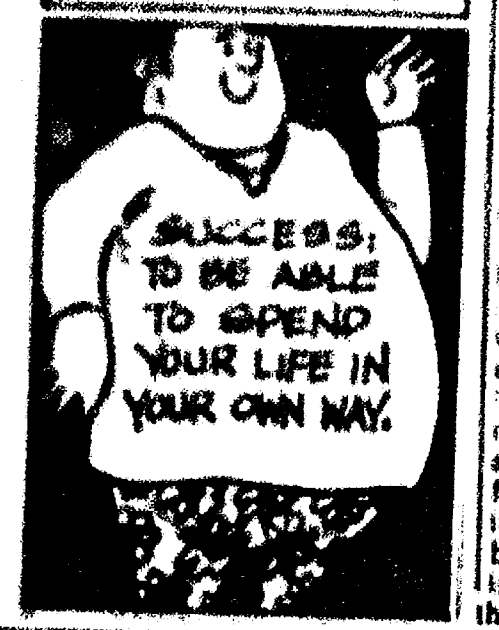


# Michigan's Copper Country Offers Tourists History Lesson Looking for

The Chelsea Standard, Thursday, September 6, 1973

Lansing—Michigan is a land of many wonders. Many industrial plants are located by Lake Michigan, and the scenic beauty of the state is reflected in the many lakes and rivers. The state is also known for its many natural resources, including its forests and wildlife. The state is a great place to visit, and there is something for everyone.

## SWEAT SHIRTS



At the southern edge of the state, the traveler encounters the Porcupine Mountains whose tallest peak rises some 2,000 feet. They too seem somewhat contrived, but they are a part of the state's natural beauty. The state is a great place to visit, and there is something for everyone.

The most scenic route to the Copper Country is from Michigan's Lower Peninsula, across the Mackinac Bridge, then west across the Upper Peninsula via US-2 or M-26 to M-44 in the western end of the U.P. M-44 winds north to White Pine, a resurrected copper mining town built in 1852. The colorful history of the White Pine Mine, however, extends over more than a century. The Nonchuk Shale, which contains the White Pine orebody, was officially discovered in 1863 by Frank Cadotte. Cadotte later sold his interests for a barrel of pork, a barrel of flour and some other grocery items. The copper deposit now being worked at White Pine Mine is one of the largest known in the world.

Porcupine Mountains State Park, northwest of White Pine, is composed of 58,000 acres of primitive forests, secluded lakes and mirages of nature. In the summer the park attracts campers, hikers, nature lovers and those simply seeking a quiet retreat. In winter, it becomes one of the State's most popular skiing mecca and winter playgrounds.

Roughly 15 miles north of the park is historic Ontonagon. Here, in the 1700's, French missionaries reported the existence of a 3,000 pound boulder of pure native copper. The Ontonagon "nugget," as it is called, is now displayed in the Smithsonian Institute in Washington, D. C. South of Ontonagon is the ghost town of Victoria. A relic of the copper boom, Victoria is now being claimed by the surrounding forest, but the spirits of bonanza days cling like early morning mist to the crumbling buildings.

The Michigan Mine, another ghost of the copper era, is also in this area. Originally the Minnesota Mine—spelled with one "n"—was reorganized and its name changed in 1872. It was at the Minnesota Mine that the largest single piece of mass copper ever known was discovered in 1850. It weighed 527 tons and required the labors of 20 men, using long handled chisels, 15 months to separate it from its position.

The old Adventure Mine at Greenland in Ontonagon County,

offers true adventure to today's Copper Country traveler. Visitors can follow the long, devious paths of the adit and explore caves and caverns left by the early day miners.

North, at Houghton, is Michigan Technological University, one of the outstanding engineering universities in the country. The annual Michigan Tech Winter Carnival is a unique event that attracts visitors from all parts of the nation. Here too, the Portage Lake Bridge connects Houghton with the Keweenaw peninsula across the Portage Canal. This kind in America with a vertical lift center span that raises the roadway to a height of 109 feet to allow Great Lakes ore carriers to pass beneath.

Across the bridge, at Hancock, is Suomi College founded in 1896. It is the only college level education institution founded by Finns outside their European homeland. Just east of Hancock, at Ripley, the Arcadian Mine and get a first hand look at the tools and methods employed to extract the red metal during 19th century boom days.

Further north is the centurian Calumet and Hecla mine whose shafts burrowed more than a mile into the earth. Once the monarch of the area, the shaft houses now stand silent and rusting. And the village of Calumet, once thriving and sophisticated urban cen-

ter of the Copper Country. Past Calumet, Ahmeek, Mohawk, Helltown and Cliff, mute and aging witnesses to a flourishing, bustling time past.

Still further north, the tourist has a choice of scenic routes around the Keweenaw Peninsula. One follows the twisting, rocky shoreline and the other—Brockway Mountain Drive—runs along the sheer cliff edge of the Keweenaw Fault, rising some 740 feet above the waters of Lake Superior. The highways terminate at Fort Wilkins, restored to appear as it did when it was built and garrisoned in 1844.

The heritage of the "Cousin Jacks" (the early miners from Cornwall, England) and the rugged Finns contributes greatly to the individuality of the region. Add remnants of the nation's early history, the color of a booming era, a profusion of ancient pines, white birches and wild thimbleberries and you have Michigan's Copper Country, a great place to find an unforgettable vacation.

For additional information on the Copper Country and other interesting places in Michigan, write the Michigan Tourist Council, Lansing 48926.

## PRUNES

Prunes are a variety of plum that has a sugar content high enough so that the fruit can be dried without fermenting.

## An Uncrowded Campground?

Whitewater Township Park offers a unique experience for family campers. The park is located in a beautiful setting on the west shore of Elk Lake, three miles northeast of Williamsburg in Grand Traverse County. The 117-acre development has 42 well-spaced, uncrowded campsites tucked away in a pine grove overlooking the lake. Other facilities include a restroom with flush toilets, showers and hot water. A dumping station is also available for self-contained recreation vehicles.

The park was completed last fall and open for visitors in June, reports Earl Gay, park commissioner. Recreation opportunities available for park users include 80 acres of hiking trails, field sports, and group camping, and swimming beach, picnic area, playground and a boat launching ramp on the lake.

The area is owned and operated by Whitewater township in Grand Traverse County. In January 1969 the township submitted an RC&D proposal to the Northwest Michigan Resource Conservation and Development Committee requesting technical and financial assistance for park development. The proposal was referred to the Michigan Department of Natural Resources and approved for a \$50,000 Land and Water Fund Grant from the Bureau of Outdoor Recreation and a \$40,000 grant from the DNR Waterways Commission for park development. The township provided the land and the local cost share.

Earl Gay, Township Park Commission chairman, relates an interesting history of the park land which was acquired in the 1930's from the state. In the mid-fourties, pine trees were planted with assistance from the Grand Traverse Soil Conservation District. Guy Springer, conservationist with the Soil Conservation Service, now retired, helped the township develop a conservation plan and a tree planting program. For many years the park land was a day use area for local residents.

Richard Jones, park manager, is on hand to welcome visitors and make their stay pleasant. Jones is a student at Northwest Michigan College, majoring in park management. Because of his interest and background, he recognizes the needs of campers and provides the extra services required.

"If you are indeed looking for a place where you can enjoy nature at its best without people pressure, try Whitewater Park for a day, week, or month."

## Former Gang Leader To Speak At Youth Rally

Nicky Cruz, former MauMau gang leader from New York City, and author of the best-seller "Run Baby Run" will be appearing in Ann Arbor on Saturday, Sept. 8, at 7:30 p.m. He will be speaking in the University of Michigan's Crisler Arena.

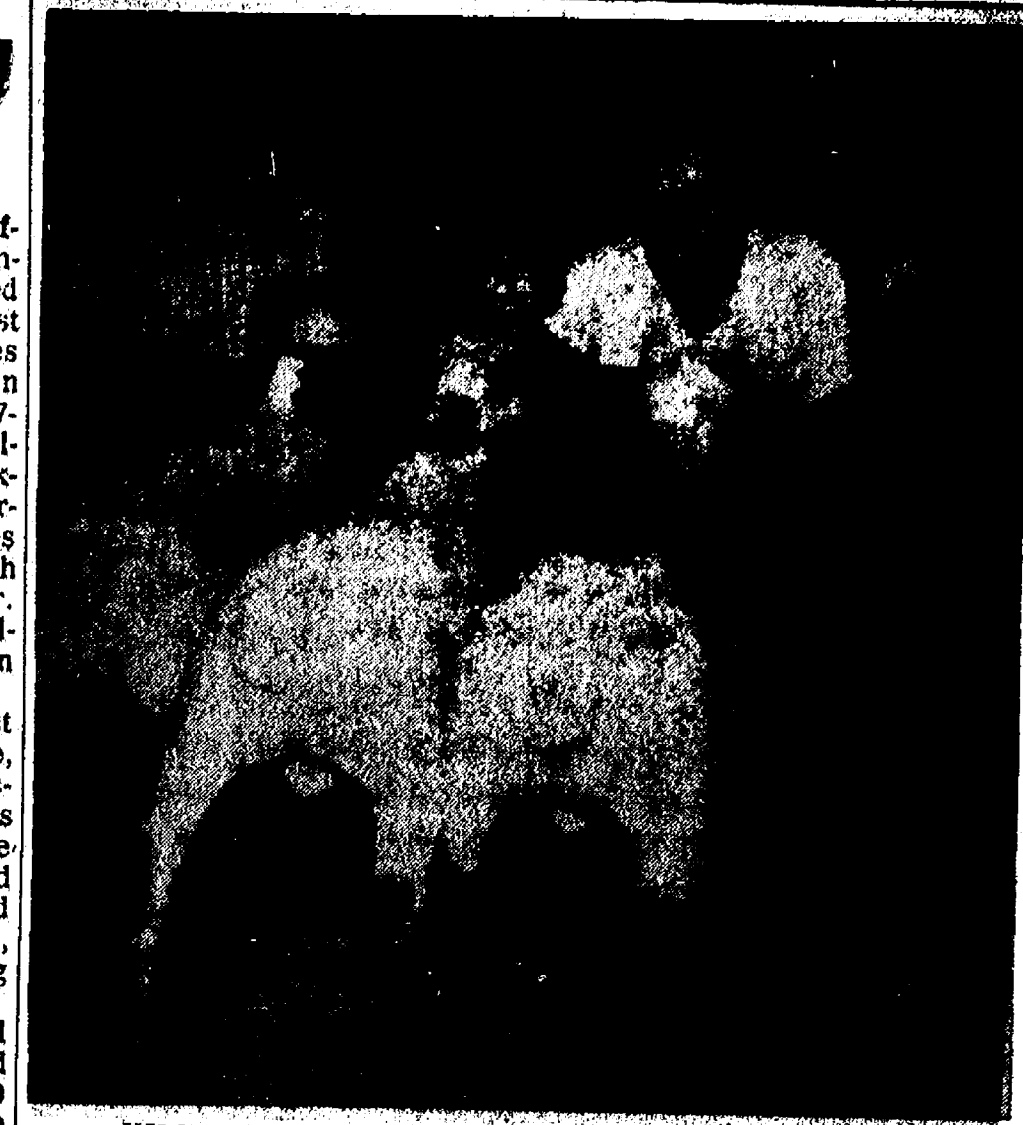
This one-time street fighter and former leader of New York City's infamous MauMau gang credits his remarkable turn-around to an awakening of religious faith. But in relating his own life's history from the time he left Puerto Rico to the point late in his teen years when he experienced the full spectrum of violence, he touches on the gamut of youthful issues, from pot-smoking to heroin addiction, to the problems of contemporary child-parent relationships.

An ironic and fateful meeting with evangelist David Wilkerson, author of "The Cross and the Switchblade," set Cruz to thinking about his life and the misgiving he had over the direction it was taking. He later joined Wilkerson and together they worked with many New York gangs—including his own and its rivals—to redirect their goals in life.

Cruz has been widely acclaimed for his work. On the TV Special "No Need To Hide," Art Linkletter documents Nicky's life and his dedication to youth. Nicky has also appeared on the David Frost Show and other TV talk shows.

Nicky's appearance is being sponsored by Huron Valley Youth for Christ. There is no admission charge.

The average black American must expect to die seven years earlier than his white counterpart. The National Urban League, a United Way of Michigan (UWM) service, is working to close the gap between health services available to the black and poor and those available to the rest of the population. UWM is financed by contributions to 150 United Way campaigns in Michigan.



KIRK VAN NATTER, right, raised this year's Champion Pen of 3 sheep, which went to Thornton Realty for \$279. Pictured also are Howard Sias, Bruce Breuninger, and Bob Thornton.

## Applications Sought Now for Service Academy Candidates

Congressman Charles E. Chamberlain (R-Mich.) announced today that he will accept applications until Oct. 1, from young men in the 6th Congressional District who are interested in attending Service Academies beginning July, 1974.

Young men ages 17 through 21, from Ingham, Jackson, Livingston and Washtenaw counties, as well as Bath township in Clinton County, may apply for appointments which are allotted to the Sixth District to fill vacancies at the Air Force Academy at Colorado Springs, the Military Academy at West Point and the Naval Academy at Annapolis.

Congressman Chamberlain will also nominate 10 candidates to the Merchant Marine Academy at Kings Point who will compete on a state-wide basis for a number of vacancies. While there are no Congressional appointments to the Coast Guard Academy at New London, Conn., Chamberlain stated he would be glad to send catalogs and information to any one interested in the Coast Guard.

Congressman Chamberlain indicated that he bases his nominations primarily upon a civil service competitive examination, the College Entrance examination and the applicant's high school academic record.

Said Chamberlain, "I have already received a number of applications, and these young men do not have to apply again. All others who would like to attend an academy, entering in the classes beginning next July, must advise me of their interest by Oct. 1, in order to be considered."

## Wanted Girl Scout Leaders

### Assistant Leaders Wanted, Too.

Why be a Girl Scout Leader? Because you care about girls, and girls care about you. You want to share good things with them. If you are a Leader, what do you do? You work with girls—little girls and big girls. You show them the many things you know. They learn from you, and you learn from them. You have ideas. The girls have ideas. You make plans, and the girls make plans. The plans turn into action. You work on projects. You go places and see things. You have troop meetings and meetings with other Leaders. You make friends. And you receive help whenever you need it. Thousands of men and women have brightened their lives as well as the lives of others by becoming Girl Scout Leaders. Be a Leader, and make some girls happy. It will make you happy, too. About the Girl Scout Movement The Girl Scouts of the U.S.A. is the largest voluntary organization for girls in the world. It is open to all girls 7 through 17 who subscribe to its ideals as expressed in the Girl Scout Promise and Law. Founded in 1913 and incorporated in Washington, D.C., in 1915, it was chartered by the Congress of the United States in 1950. Girl Scouts is a growing organization. But in order to continue to grow, it needs Leaders—like YOU. If you can spare the time, you can become a Girl Scout Leader or an Assistant Leader. Helpers are also needed. To find out more, just mail the coupon below.

Mail this coupon for free literature.

HURON VALLEY GIRL SCOUT COUNCIL  
19 N. HAMILTON ST.  
YPSILANTI, MICH. 48197

Without obligation, please send me free literature telling how I can become a Girl Scout Leader, Assistant or Helper.

Name \_\_\_\_\_  
Address \_\_\_\_\_  
City \_\_\_\_\_ State \_\_\_\_\_ Zip \_\_\_\_\_  
Telephone \_\_\_\_\_

# HIGHEST REGULAR PASSBOOK SAVINGS INTEREST

5

1 1/4%

PER ANNUM

EFFECTIVE ANNUAL RATE 5.35%

DAILY INTEREST

NO MINIMUM DEPOSIT—WITHDRAW ANYTIME!

6 1/2%

PER ANNUM

FOR 12 MONTHS ON \$100 OR MORE EFFECTIVE ANNUAL RATE 6.5%

6 3/4%

PER ANNUM

FOR 30 MONTHS ON \$500 OR MORE EFFECTIVE ANNUAL RATE 6.75%

7%

PER ANNUM

FOR 48 MONTHS ON \$1000 OR MORE EFFECTIVE ANNUAL RATE 7.15%

AND FOR YOUR LONG TERM INVESTMENT DOLLAR, THESE HIGH PAYING PASSBOOK CERTIFICATE ACCOUNTS

ALL DEPOSITS INSURED TO \$20,000 WITH THE FSIC

WITHDRAWALS PRIOR TO MATURITY SUBJECT TO FEDERAL REGULATIONS

## ANN ARBOR SAFE FEDERAL SAVINGS

the savings and loan specialists

ANN ARBOR OFFICES: Downtown, Liberty at Division; Westside, Pauline at Stadium; Eastside, Huron Parkway at Platt; Northside, Plymouth at Nixon; CHELSEA, Main St. near Old US-12, DEXTER, 8081 Main Street.



The Chelsea Standard

For quick information, telephone your





A horse and rider of Chelsea, second and third place for the photographer, just too tired out for a further showing around.



THE RESERVE CHAMPION HORSE, perks the parade Saturday. The horse was shown by Terry up at a word from owner Kathy Hartman after Williams.



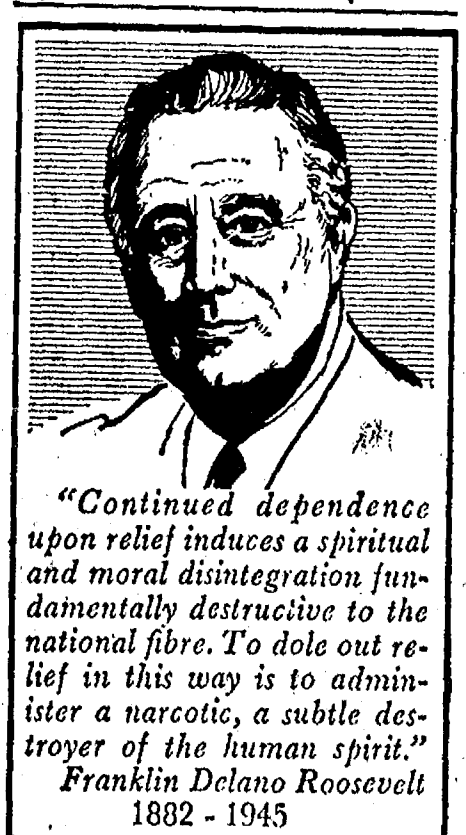
THE GRAND CHAMPION PONY and a first place in pleasure driving both belonged to Lucy Bott after the Fair's judging.

**NEW MAGAZINE**  
There's a new magazine out and it's available in over 20 foreign languages — it's called "Weeder's Digest."

**FIRST FAIR**  
America's first county fair reportedly was established at Pittsfield, Massachusetts, in 1811, as the Berkshire County Fair.

One of the most direct methods of restoring confidence in the blind is to provide travel independence. Leader Dogs for the Blind (LDB), supported through contributions to local United Way campaigns, is doing just that. A United Way of Michigan service, LDB provides the blind with constant companionship, protection and safety through well-trained leader dogs.

### American Viewpoints



"Continued dependence upon relief induces a spiritual and moral disintegration fundamentally destructive to the national fibre. To dole out relief in this way is to administer a narcotic, a subtle destroyer of the human spirit."

Franklin Delano Roosevelt  
1882 - 1945

## KEEP FIT WITH MILK

**MILK IS NATURE'S BEST FOOD**

Drink to your good health with milk... vitamin-enriched to help the whole family keep fit and full of energy. Call for delivery.

**Hickory Ridge Farm Dairy**  
(Successor to Weinberg Dairy)  
P.O. Box 1000, Pittsfield, Mass.  
Phone (517) 881-2000

CALL OR STOP IN

## CHELSEA GLASS WORKS

WORKMANSHIP AND MATERIALS FULLY GUARANTEED.  
Open Daily 8 a.m. to 5 p.m.; Sat., 8 a.m. to 1 p.m.

140 W. Middle, Chelsea Phone (313) 475-8667

**WE REPAIR AND REPLACE:**

- ★ STORE FRONTS
- ★ FURNITURE TOPS
- ★ SHOWER DOORS
- ★ THERMOPANES
- ★ AUTO GLASS - Including Windshields

Free Pick-up and delivery on auto work.

**Storm Door & Window Reglazing & Screens**

COMMERCIAL BUILDINGS OR RESIDENTIAL

**PROMPT SERVICE REASONABLE PRICES**

# Horse Show Winners Listed

(Continued from page one)

Lake, third; and fourth, Jim Botsford, Chelsea.

Pony colts, two and over, were shown in Class No. 10. Lucy Bott of Grass Lake was first; Tina Carlson was second and Mardy Stirling of Chelsea was third. Stanley Kuobler of Manchester was fourth.

Debbie Green of Grass Lake earned the showmanship award in class No. 11.

Showing their steeds saddled, winners in Class No. 12 for 14-year-olds and under were Beth Flanagan, Chelsea, first; Linda Carlson, Manchester, second; Dawn Kilpatrick, Grass Lake, third; and Patty Carlson, Manchester, fourth.

Sharon Kropf of Chelsea won the showmanship award in the pony division.

Awards in Class No. 15, Pony Walk-Trot, went almost entirely to Chelsea individuals. First place winner was Mardy Stirling of Chelsea. Chelsea's Steve Botsford and Larry Cameron were second and third respectively and Kay Geer of Dexter was fourth.

Showing ponies under saddle, Sharon Kropf of Chelsea was first, Steve Botsford was second and Mardy Stirling was third. Fourth went to Tina Carlson, of Manchester.

In Class No. 17, Horsemanship 14 and under, Linda Carlson was first, Beth Flanagan of Chelsea was second and Patty Carlson was third. Dawn Kilpatrick was fourth.

In Horsemanship, 15 and over, Bill Tite, Chelsea, was first, and Manchester's Angle Snyder was second. Mary Kay Garr of Chelsea was third and Denise Kilpatrick was fourth.

Taking in a first in English Pleasure was Patty Carlson. Judy Ward of Chelsea followed and Kathy Hartman was third. Julie Tite of Chelsea was fourth.

First place, in English Equitation was Cheryl Soback of Chelsea. Julie Tite was second and Cathy Garnett of Chelsea was third. Linda Carlson was fourth.

English Jumping awards went to Judy Ward, Chelsea, first; Cathy Garnett, Chelsea, second; and Ellen Boras, Grass Lake, third.

The Grand Champion Horse was shown by Kathy Hartman of Milan. Reserve honors went to Terry Williams who showed Kathy Hartman's horse. Grand Champion Pony was shown by Lucy Bott of Chelsea. The Reserve Champion Pony was shown by Manchester's Tina Carlson.

The Everett Van Riper Showmanship Award was given to Susan Ford.

Judging Saturday's show, which started at 9 a.m., was Bryce McGinnis. She awarded honors as follows:

Class No. 1, Fitting and Showing, ponies (12 and under): First, Lynne Warden, second; Lucy Bott, third; Dana Lindeman, fourth; Debbie Adams, fifth; and sixth, Karla Hutchings.

Class No. 2, Fitting and Showing, horses (open): Bob Olberg, first; Lori Smith, second; Cheryl Soback, third; Kathy Land, fourth; Beth Flanagan, fifth; and Cheryl Whitesall, sixth.

Class No. 3, Halter, 1/2 Arab, yearlings and over: R. E. Wright, first; Dee Wright, second; Clinton Fisk, third; Terry Williams, fourth; Beth Flanagan, fifth; and Cheryl Whitesall, sixth.

Class No. 4, Halter Mares, horses, two years and over: Lori Smith, first; Bonnie Payeur, second; Clinton Fisk, third; Priscilla Tolefson, fourth; Laurine Kuebler, fifth; and Kathy Hartman, sixth.

Class No. 5, Halter Geldings, horses, two years and over: Bob Olberg, first; Dennis Dindoffer, second; Jimmy Adams, third; Cheryl Soback, fourth; Clinton Fisk, fifth; and Kathy Hartman, sixth.

Class No. 6, Halter Grade Mares and Geldings, horses, two years and over: Karen Niemi, first; Robin Knepper, second; Kathy Robertson, third; Rita Drouare, fourth; Melody Chapman, fifth; and sixth, Beverly Bott.

Class No. 7, Western Horsemanship, ponies, 12 and under: Julie Murray, first; Lynne Warden, second; Linda Carlson, third; Sharon Kropf, fourth; Lynn Robertson, fifth; and Debbie Patterson, sixth.

Class No. 8, Western Horsemanship, horses, 14 and under: Karen Whitesall, first; Robin Knepper, second; Beth Flanagan, third; Jimmy Adams, fourth; Given Cameron, fifth; and Dawn Kilpatrick, sixth.

Class No. 9, Western Horsemanship, horses, open: Lori Smith, first; Cheryl Whitesall, second; Dawn Lee, third; Bonnie Payeur, fourth; Kathy Land, fifth; and Mary Kay Harr, sixth.

Class No. 10, Western Pleasure, 1/2 Arab, open: R. E. Wright, first; Kathy Hartman, second; Clinton Fisk, third; Angle Snyder, fourth; Dee Wright, fifth; and Patty Carlson, sixth.

Class No. 11, Pony Pleasure Driving, 18 and under: Lucy Bott, first; Dee Tomshany, second; Emily Bonus, third.

Class No. 12, English Jumping, open: Bob Olberg, first; Gail Allen, second; Priscilla Tolefson, third; Gail Allen, fourth; Ann Hicks, fifth; and sixth Judy Ward.

Class No. 13, English Horsemanship, open: Debbie Hendrickson, first; Priscilla Tolefson, second; Gail Allen, third; Cheryl Soback, fourth; Bob Olberg, fifth; and Judy Ward, sixth.

Class No. 14, Boot Race, ponies, 12 and under: Sharon Kropf, first; Debbie Patterson, second; Monica Margues, third; Becky Foster, fourth; Julie Botsford, fifth; and Tina Annabelle, sixth.

Class No. 15, English Pleasure, open: Debbie Hendrickson, first; Priscilla Tolefson, second; Kathy Hartman, third; Julie Linn, fourth; Mike Fisk, fifth; and sixth, Patty Carlson.

Class No. 16, Ride and Lead, ponies, 12 and under: Becky Foster, first; Karen Hutchings, second; Debbie Patterson, third; Jimmy Hasen, fourth; Margaret Stirling, fifth; Steve Botsford, sixth.

Class No. 17, Western Pleasure, horses, 14 and under: Karen Whitesall, first; Lynne Warden, second; Beth Flanagan, third; Given Cameron, fourth; Robin Knepper, fifth; and Jimmy Adams, sixth.

Class No. 18, Western Pleasure, horses, open: Dennis Dindoffer, first; Dawn Lee, second; Kathy Land, third; Cheryl Whitesall, fourth; Mary Kay Harr, fifth; Lori Smith, sixth.

Class No. 19, Western Pleasure, ponies, 12 and under: Julie Murray, first; Lynne Warden, second; Steve Botsford, third; Sharon Kropf, fourth; Margaret Stirling, fifth; and Dena Lindeman, sixth.

Class No. 20, Cloverleaf, open: Lori Smith, first; Bob Hone, second; Jeff Proctor, third; Mary Kay Harr, fourth; Jerry Feller, fifth; Jimmy Botsford, sixth.

Class No. 21, Flag Race, ponies, 12 and under: Sharon Kropf, first; Kay Geer, second; Jimmy Hasen, third; Chris Ford, fourth; Larry Cameron, fifth; Andrew Risner, sixth.

Class No. 22, Flag Race, horses, open: Bob Hone, first; Tony Fischer, second; Dennis Dindoffer, third; Mike Kropf, fourth; Liz Foster, fifth; Michelle Marques, sixth.

Class No. 23, Pole Bending, ponies, 12 and under: Sharon Kropf, first; Becky Foster, second; Bobby Beeman, third; Chris Ford, fourth; Given Cameron, fifth; Susan Ford, sixth.

Class No. 24, Pole Bending,

horses, open: Jeff Proctor, first; Jerry Feller, second; Karen Niemi, third; Jimmy Botsford, fourth; Mike Kropf, fifth; Liz Foster, sixth.

Class No. 25, Off and On, open: Ricky Beeman, first; Liz Foster, second; Sandy DeLanois, third; David Steinbach, fourth; Kelly Zulgg, fifth; and Sharon Kropf, sixth.

The Speed and Action class was cancelled.

Class No. 27, Fitting and Showing Off: All entries were given out in this order: Terry Williams, first; Larry Cameron, second; Bennis Fletcher, third; Marsha La Vasseur, fourth; Lee Master, fifth; Dennis Dindoffer, sixth; Margie Patterson, seventh.



GRIMACING INTO THE SUNLIGHT, but still proud trophy she holds, is Sharon Kropf, whose pony won the showmanship award.



DEBBIE GREEN sits proudly astride the horse that won her a trophy for showmanship for a horse under tack.



SUSAN FORD received the Everett Van Riper Trophy for Sportsmanship in the judging Saturday. She was a participant in Saturday's horse show, the biggest ever.



ARABIAN NIGHTS ATTIRE AND A RIBBON for the Reserve Champion Pony seem to go well together for Tina Carlson.

## YES

WE ARE MAKING LONG-TERM FARM REAL ESTATE LOANS

SEE US

P. O. Box 1006  
Ph. 769-2411 8645 Jackson Rd.  
Ann Arbor, Mich. 48108

personalized

# MATCHES

with name or initials imprinted

## 48-HOUR SERVICE

When Requested

Yellow - Green - Blue

Reg. \$3.00 Value **\$2.00**  
50 Books

METALLIC

Gold - Silver - Light Green

Reg. \$3.50 Value **\$2.50**  
50 Books

## NAPKINS

Personalized with your name or initials.  
(Makes a nice gift, too!)

100 for \$3.25

Luncheon or Beverage sizes.  
Choice of several colors.

## The Chelsea Standard

300 North Main Street  
PHONE 475-1371

social printing

## Mobil-Toons

By GLENN

"No... you put in the gas, ... I'll wash the windshield!"

We give the fastest service in town!

## GLENN'S MOBIL SERVICE

1629 M-52 & I-94  
CHELSEA, MICHIGAN  
Phone 475-1767

GLENN HEIM PROP.



## Ypsilanti Jaycee Auxiliary Sponsors Annual Home Tour

Eight homes in the Ypsilanti area will be viewed by the current tour, Sept. 15, as part of the annual Home Tour sponsored by the Ypsilanti Area Jaycee Auxiliary.

As in the past, the proceeds from this tour will be funneled into the Auxiliary's Dental Fund which has been set up to help any Ypsilanti area child who is unable to afford the cost of a dentist receive emergency care.

Each year more and more requests for dental aid are received and very few are ever turned down.

The homes will open from 10 a.m. to 4 p.m. Tickets may be obtained by contacting Mrs. Pat Kelsey at 453-4171 in Ypsilanti.

## What's Cooking In Michigan

By Larrestine Trimm  
Michigan Dept. of Agriculture  
Marketing Information Specialist

Like sweet, juicy melons? Thank goodness for our home-grown Michigan crop. They're \$18 each at neighborhood markets in Japan, according to news reports.

Fresh Michigan muskmelons are on the market at reasonable prices, according to marketing officials of the Michigan Department of Agriculture, and they're expected to be lower in price about the first week of September.

This year's crop should be about the same in volume as the 1972 crop which was grown on 2,300 acres of land and valued at over \$1 million dollars.

When buying a ripe melon, let your nose be your guide. A ripe melon will have a sweet aroma when held to the nose and it will yield slightly when light thumb pressure is applied to the blossom end.

Buy a ripe melon if you plan to serve it within a few hours. If the aroma is quite noticeable, place it in a plastic bag before putting it in the refrigerator to chill. This will prevent the odor from mingling with other foods.

Melons slightly less than ripe should be left at room temperatures from two to four days to reach the best eating stage, then refrigerated several hours before serving.

Top fresh melon with fruit or Michigan dairy products like ice cream, sherbert, cottage cheese or yogurt. Sprinkle melon with ginger and serve with lime wedges. Or cut a plug in the upper side of a melon, scoop out the seeds and pulp with a long handled spoon, and pour in about one cup of port wine. Chill the melon on ice in the refrigerator for several hours before serving. Use the marinated wine as a dressing.

The newlyweds will return to make their home in Ann Arbor after a wedding trip to northern Michigan for two weeks. The bride left for the honeymoon dressed in a knit pink dress and wearing a white brimmed hat.

Mrs. White is a 1971 graduate of Chelsea High school. Her husband graduated from Huron High in 1970. He is now manager of Morty's Men's Clothing.

## CONSUMERS' CORNER

### BALANCED DIET SUPPLIES VITAMINS

You can get an adequate supply of the B vitamins in your diet without buying them in a bottle or from the specialty food rack. The B vitamins are available in many foods and the normal individual may easily have a diet that is sufficient in all of the nutrients.

Foods in the meat group are leading sources of the B vitamins — thiamine, riboflavin and niacin. Whole grain and enriched breads and cereals supply smaller amounts. In addition, milk is an outstanding source of riboflavin. These vitamins play an important role in the release of energy from food for use by the body. They also help with the functioning of nerves, digestion, normal appetite and healthy skin.

Good sources of vitamin B6 which helps prevent anemia are meats, whole grain cereals, eggs, bananas, dry beans, dark green leafy vegetables and potatoes. Vitamin B12, which also helps prevent anemia, is found only in foods of animal origin, such as meat, eggs, milk and milk products.

Telephone Your Club News To 475-1371

## BUTTON BARBS

POLITICS!  
THE ART OF  
MAKING YOURSELF  
POPULAR WITH PEOPLE  
BY GIVING THEM  
GRANTS WITH THEIR  
OWN MONEY.



Mrs. Robert J. Cantrell

## Catherine J. Clark, Robert Cantrell Wed at Chelsea Methodist Church

Mr. and Mrs. Robert J. Cantrell, newlyweds who were married in Chelsea Methodist church, Saturday, Sept. 1, have left for their home in Decatur, Ga.

The bride is the former Catherine J. Clark, daughter of Mr. and Mrs. William E. Clark of 28 Sycamore Dr. Her husband is the son of Mr. and Mrs. George Cantrell of 13910 Trinkle Rd.

The double-ring candlelight ceremony was attended by 275 guests. The Rev. Clive Dickens officiated. Christine Alber of Sycamore Dr. sang "We've Only Just Begun" and "Where Is Love."

The bride's floor-length white polyester gown was designed and sewn by her grandmother, Mrs. Alex Mshar, 742 Book St. It featured a ruffled, yoked bodice, long set-in sleeves and a softly gathered skirt that ended in a full train.

With it she wore a cathedral veil and carried a bouquet of pale pink roses, baby's breath and a stephanotis.

Mrs. Robert (Donna) P. Stofor, of McKinley Rd., was matron of honor. She is the bride's sister. The bridegroom's sister, Miss Sheryl Cantrell, and Miss Deborah Barker, a classmate of the bride's, were bridesmaids.

The attendants wore matching pale pink gowns styled similarly to the bride's. The bridesmaids carried colonial bouquets of pink and white carnations, roses, and baby's breath.

The bride's mother wore a raspberry colored gown accented with ruffles on the neckline and hem. Pale pink roses made up her corsage.

The bridegroom's mother wore a pale pink gown with long sleeves, a lace top and an accordion pleated skirt. Her corsage was of roses. Miss Julie Shaninger, cousin of the bride, was flower girl. Her dress was a miniature of those worn by the bridesmaids. She too carried pink and white flowers in a colonial bouquet.

The ringbearer was George Comby, III, a cousin of the bridegroom from Washington Courthouse, O. He wore a light blue polyester double knit tuxedo with a white ruffled shirt, as did the other men in the party.

Best man was Junior Borders of North St., a cousin of the bridegroom. Ushers were Steve Cantrell, brother of the bridegroom, and Ronald Morley of Bad Axe, a friend of the bridegroom.

The Rod and Gun Club was the site of the reception which was attended by the 175 guests. Honorary hosts at the event were the bride's grandparents, Mr. and Mrs. Alex Mshar of 742 Book St. and Mr. and Mrs. Raymond Clark of Stofor Rd.

## Magic Mirror Beauty Salon

Open Tuesday thru Friday  
9 a.m. to 9 p.m.  
Saturday, 8 a.m. to 3 p.m.  
PHONE 665-0816

## VILLAGE BEAUTY SALON

LORETTA  
CHERYL - JANICE - CAROL - SUE  
107 N. MAIN  
PHONE 475-1671

Beginning Sept. 10, we will be open  
Mondays from 8 a.m. to 8 p.m.

## Faith Lutheran Church Opens Day School

A new school opened its doors in Dexter yesterday. The Christian Day School, sponsored by Faith Evangelical Lutheran church, has seven students from the area in grades kindergarten through fourth. They are taught by Miss Mary Sue Pleuss.

"There's been talk for quite a time about educating the child completely, in mind, soul and body," says the Rev. John Huebner, pastor of Faith Evangelical. In January of this year the church membership voted to support a Christian day school. Members of the church's Board of Education, Gerald Straub, chairman, Tom Abrass, Tom Dittmar, and Duane Brassow, began making plans.

Classes will meet daily in the lower level of the church. Tuition is free for students who are members of the church and is \$250 for non-members. Although the Rev. Huebner expected more students than enrolled, he notes that a report by members of the church predicts enough other potential students in the area to add a grade each year. He expects the school to have 25-30 students within the next five years.

The school follows completely state guidelines and will soon be accredited. Reading, arithmetic, and other classes taught in public school are part of the curriculum. However, Miss Pleuss, a graduate of Dr. Martin Luther College in New Ulm, Minn., will bring the religious slant to her classes. "She'll show how God moves in history, or, in science, how God set up the well-ordered universe which makes science possible," says the Rev. Huebner.

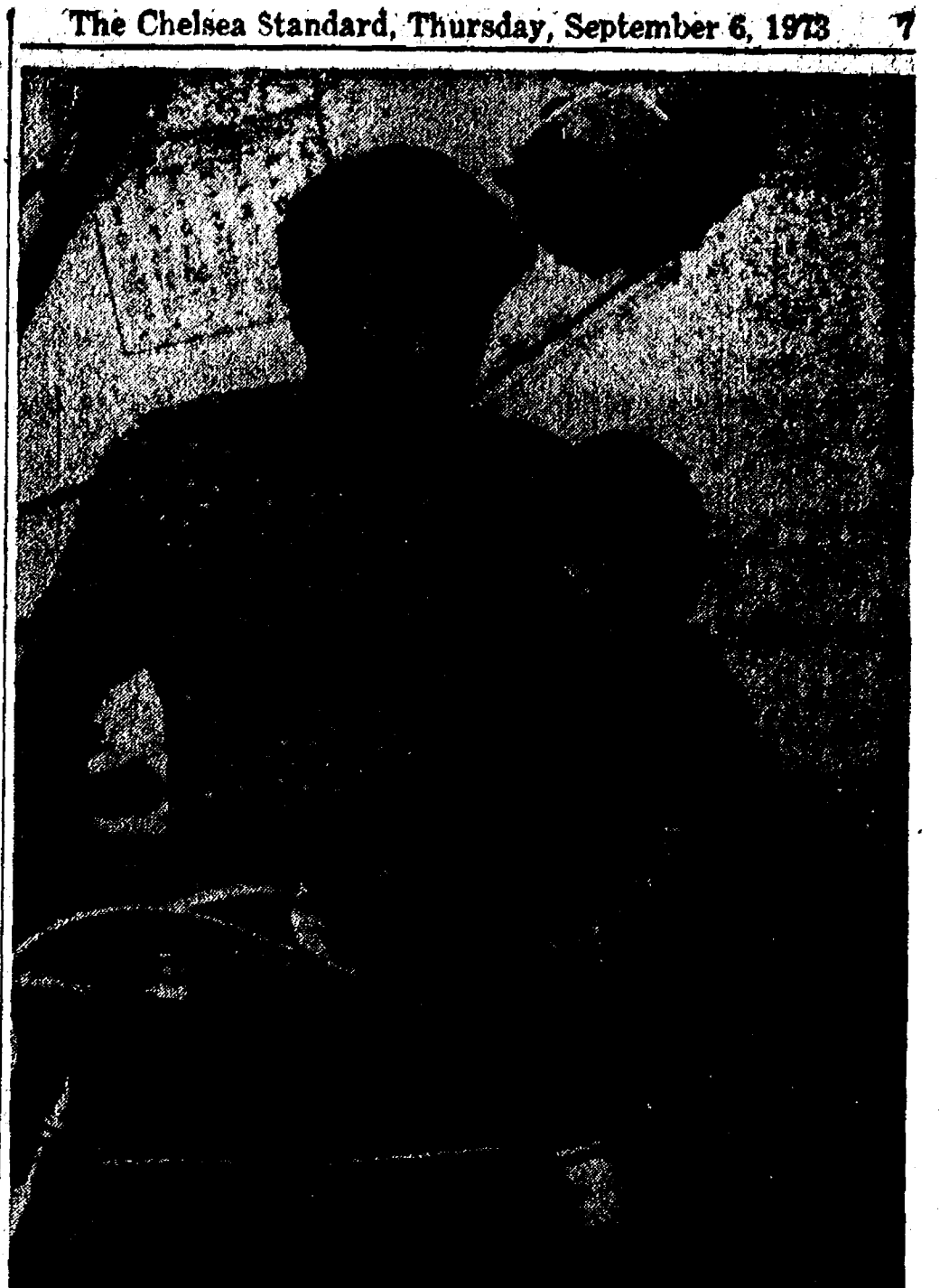
The new school is one of several Christian day schools in the area and one of many all over the nation operated by the Lutheran Church. Pastor Huebner notes that in national standardized tests, eighth grade students in the Lutheran schools finished 1.5-1.8 points ahead of others at their grade level.

Her husband is also a graduate of Chelsea High school and received his Bachelor of Business Administration at Eastern Kentucky University. He is currently taking part in a management training program with the West Lumber Co. in West Decatur, Ga.

Before their wedding, a shower in the bride's honor was hosted by Mrs. Jacques Shaninger, Miss Nancy Mshar and Mrs. Robert Stofor on Aug. 5. On Aug. 25, Mrs. Elita Borders and Miss Sheryl Cantrell gave a shower in her honor.

The rehearsal dinner hosted by the bridegroom's parents, Mr. and Mrs. George Cantrell was held at the Holiday Inn, Ann Arbor.

They just had an International Film Festival in France. England won an award for best editing; Italy for best directing; France for best writing; and America for the best popcorn.



IT'S A LITTLE TOO BIG for him now, but Philip McGibney has plenty of time to grow into the new bicycle he won at the drawing Saturday at the Fair after the parade.

## Hoodlums Slash Tires Friday Night at Fair

Fair festivities were some what spoiled for John Tandy and Edwin Rentschler when their tires were slashed at the fairgrounds Friday night.

Tandy is Dexter Township Supervisor and Rentschler is a member of the Saline Fire Department. Tandy lost two tires to the vandals and Rentschler lost one.

Did you hear about the little town that's having such a big traffic controversy? The mayor wants to make Main Street one way—and there's no other street!

Michigan was the first state to provide in its Constitution for the establishment of public libraries.

**VIVIANE WOODARD**  
**COSMETICS**  
**475-8785**  
Dorothy Ortring, Director

## Sign Up for Our Fall Needlework Classes

- BEGINNING CROCHET (8 wks.)** Starts Sept. 26, Wed. evening, 7:30 to 9:30. Cost \$9
- BEGINNING KNITTING (10 wks.)** Starts Sept. 24, Mon. afternoon, 1-3:00. Cost \$10
- BEGINNING NEEDLEPOINT (6 wks.)** Starts Sept. 18, Tues. evening, 7:30-9:30. \$16
- BEGINNING CREWEL (6 wks.)** Starts Sept. 24, Mon. morning, 9:30-11:30. Cost \$15.00
- ADVANCED NEEDLEPOINT, Bargello (6 wks.)** Starts Sept. 19, Wed. morning, 9:30-11:30. Cost \$16.00



FOR MORE INFORMATION CALL  
**TAILFEATHER CREATIONS**  
103 N. Main, Chelsea  
Phone 475-2512

## DEXTER TOWNSHIP PLANNED USE REPORT Of Federal Revenue Sharing Funds

The government of Dexter Township plans to expend its revenue sharing allocation of the entitlement period beginning July 1, 1973 and ending June 30, 1974 in the following manner based upon an estimated total of \$8,745. (Account No. 23-3-981-994). Form No. 3229 filed with Department of the Treasury, Office of Revenue Sharing, 1900 Pennsylvania Avenue N.W., Washington, D.C. 20226.

- (K) EXECUTIVE PROPOSAL. Check this block if this plan is based on an executive proposal.
- (L) DEBT. How will the availability of revenue sharing funds affect the borrowing requirements of your jurisdiction?
- ☐ Avoid Debt Increase ☐ No Effect ☐ Lessen Debt Increase ☒ Too soon to predict effect.
- (M) TAXES. In which of the following manners is it expected that the availability of Revenue Sharing Funds will affect the tax levels of your jurisdiction? Check as many as apply.
- ☐ Will enable reducing rate of major tax ☒ Will prevent increase in rate of major tax ☐ Will prevent enacting a new major tax ☐ Will reduce amount of rate increase of a major tax ☐ No effect on tax levels ☐ Too soon to predict effect

### OPERATING/MAINTENANCE EXPENDITURES

Priority Expenditure Category (A)	Planned Expenditures (B)	Percent Planned For Maintenance of Existing Services (C)	Percent Planned For New or Expanded Services (D)
1 Public Safety (Local Roads)	\$8,745.00	100%	0%
2 Environmental Protection	\$	0%	0%
3 Public Transportation	\$	0%	0%
4 Health	\$	0%	0%
5 Recreation	\$	0%	0%
6 Libraries	\$	0%	0%
7 Social Services for Aged & Poor	\$	0%	0%
8 Financial Administration	\$	0%	0%
9 Total Planned Operating/Maintenance Expenditures	\$8,745.00		

### CAPITAL EXPENDITURES

Purpose (E)	Planned Expenditures (F)	Equipment (G)	Percent Planned For: Construction (H)	Land Acquisition (I)	Debt Retirement (J)
10 Multi-Purpose and General Govt.	\$	0%	0%	0%	0%
11 Education	\$	0%	0%	0%	0%
12 Health	\$	0%	0%	0%	0%
13 Transportation	\$	0%	0%	0%	0%
14 Social Development	\$	0%	0%	0%	0%
15 Housing & Community Development	\$	0%	0%	0%	0%
16 Economic Development	\$	0%	0%	0%	0%
17 Environmental Conservation	\$	0%	0%	0%	0%
18 Public Safety	\$	0%	0%	0%	0%
19 Recreation and Culture	\$	0%	0%	0%	0%
20 Other (Specify)	\$	0%	0%	0%	0%
21 Other (Specify)	\$	0%	0%	0%	0%
22 Other (Specify)	\$	0%	0%	0%	0%
23 Total Planned Capital	\$	0%	0%	0%	0%

(N) ASSURANCES (Refer to Instruction G)

The news media have been advised that a complete copy of this report has been published in a local newspaper of general circulation. I have records documenting the contents of this report and they are open for public and news media scrutiny.

I assure the Secretary of the Treasury that the statutory provisions listed in Part G of the Instructions accompanying this report will be complied with by this recipient government with respect to the entitlement funds reported hereon.

John M. Tandy  
Supervisor

Date Published: Thursday, September 6, 1973.



Mrs. William G. White

## Dianne Brown, William G. White Speak Vows in Ann Arbor Church

Dianne M. Brown, the daughter of Mrs. Anna M. Brown and the late Howard W. Brown, exchanged wedding vows with William G. White of Ann Arbor, Aug. 25.

The bridegroom is the son of Mr. and Mrs. William W. White, Ann Arbor.

Approximately 250 guests gathered at Bethel United Church of Christ to witness the evening ceremony. The Rev. Theodore Frost officiated. Arthur Yancy sang the solo, "Ave Maria."

Given in marriage by her brothers, Howard W. Brown, Jr., and Robert D. Brown, both of Chelsea, Miss Brown wore a gown of organza and scalloped lace. Fashioned in an floor-length, A-line style, the gown was accented with a detachable chapel train, a fitted bodice, a high neckline and long bishop sleeves. Her chapel-length veil of illusion was edged with scalloped lace and was attached to a Camelot headpiece.

The mother of the bride was Mrs. Rita Dell of Gregory. She wore an aqua colored, floor-length dress, fashioned with an empire waist, a high, ruffled neckline and long fitted sleeves.

Dressed in similar gowns with matching white brim hats were the bridesmaids, Mrs. Joanne Rowe, sister of the bride of E. Summitt St., Mrs. Diane L. White of Ann Arbor and Miss Wendy Weston, Grass Lake.

Also attending the bride were her nieces, Joanne M. and Carline A. Brown of Chelsea and Darin

Rowe, a nephew, who were flower girls and ringbearer.

Steven H. Dell, a cousin of the bridegroom from Gregory, was best man. Ushers were David Rowe, brother-in-law of the bride, Ronald White, brother of the bridegroom and Paul Woolner of Ann Arbor.

The mother of the bride wore a silk organza floor-length gown with long sleeves and a ruffled neckline. The orchid print was matched by an orchid corsage.

The bridegroom's mother wore a polyester crepe dress of teal blue trimmed in lace. She wore matching silver accessories and a corsage of pink carnations.

The couple greeted their guests after the ceremony at the Rod and Gun Club in Chelsea. Mrs. Shirley Brown, sister-in-law of the bride, cut the cake while Mrs. Faye Fredericks, cousin of the bride, served the punch. Both are from Chelsea. Mrs. Kay Taft of Ann Arbor managed the guest book.

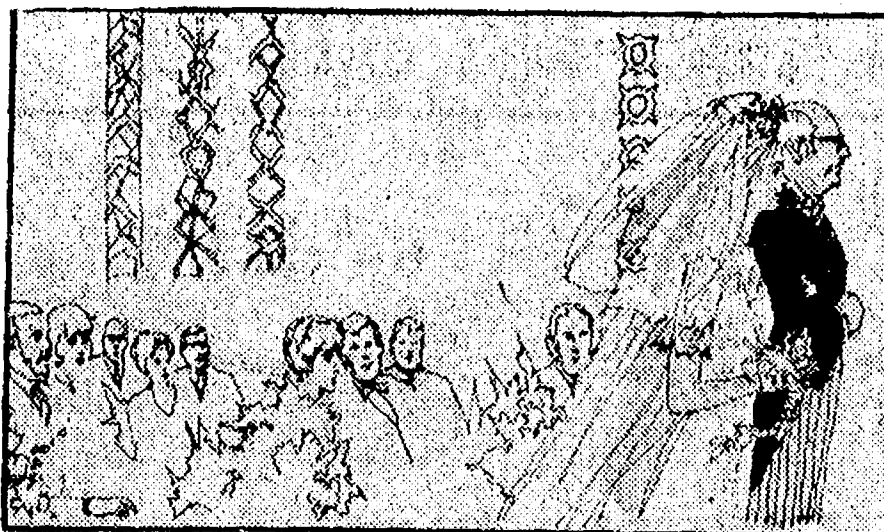
The newlyweds will return to make their home in Ann Arbor after a wedding trip to northern Michigan for two weeks. The bride left for the honeymoon dressed in a knit pink dress and wearing a white brimmed hat.

Mrs. White is a 1971 graduate of Chelsea High school. Her husband graduated from Huron High in 1970. He is now manager of Morty's Men's Clothing.

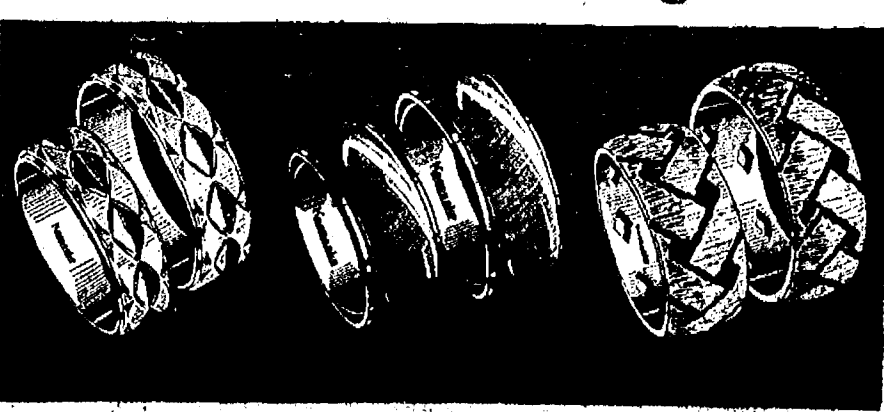
Subscribe today to The Standard!

## BETTY D. WALTON DANCE STUDIO Opens Soon

Watch for adv. next week.  
Enrollment date: Saturday, Sept. 15



## Rings For Your Wedding Bells



CHAMPAGNE LADY'S MAN'S  
CARWIN LADY'S MAN'S  
WILLOWBROOK LADY'S MAN'S

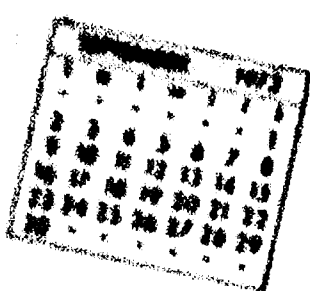
Beautifully matched Keepsake wedding rings... artistically crafted in 14K gold. Select yours today from our exciting, new collection by Keepsake.

**Keepsake**  
JEWELRY

**WINANS JEWELRY**



## Community Calendar



**Sept. 10** - VFW Auxiliary's regular business meeting, Monday, Sept. 10, 8 p.m., Ketchikan Lodge Hall.

**Sept. 11** - Chelsea Community Farm Bureau will be held Sept. 11 at 8 p.m. at Sylvan Town Hall. Hosts are Mr. and Mrs. John Cook and the Everest Van Rippers.

**Sept. 12** - Chelsea Community Farm Bureau will be held Sept. 12 at 8 p.m. at Sylvan Town Hall. Hosts are Mr. and Mrs. John Cook and the Everest Van Rippers.

**Sept. 13** - Chelsea Community Farm Bureau will be held Sept. 13 at 8 p.m. at Sylvan Town Hall. Hosts are Mr. and Mrs. John Cook and the Everest Van Rippers.

**Sept. 14** - Chelsea Community Farm Bureau will be held Sept. 14 at 8 p.m. at Sylvan Town Hall. Hosts are Mr. and Mrs. John Cook and the Everest Van Rippers.

**Sept. 15** - Chelsea Community Farm Bureau will be held Sept. 15 at 8 p.m. at Sylvan Town Hall. Hosts are Mr. and Mrs. John Cook and the Everest Van Rippers.

**Sept. 16** - Chelsea Community Farm Bureau will be held Sept. 16 at 8 p.m. at Sylvan Town Hall. Hosts are Mr. and Mrs. John Cook and the Everest Van Rippers.

**Sept. 17** - Chelsea Community Farm Bureau will be held Sept. 17 at 8 p.m. at Sylvan Town Hall. Hosts are Mr. and Mrs. John Cook and the Everest Van Rippers.

**Sept. 18** - Chelsea Community Farm Bureau will be held Sept. 18 at 8 p.m. at Sylvan Town Hall. Hosts are Mr. and Mrs. John Cook and the Everest Van Rippers.

**Sept. 19** - Chelsea Community Farm Bureau will be held Sept. 19 at 8 p.m. at Sylvan Town Hall. Hosts are Mr. and Mrs. John Cook and the Everest Van Rippers.

**Sept. 20** - Chelsea Community Farm Bureau will be held Sept. 20 at 8 p.m. at Sylvan Town Hall. Hosts are Mr. and Mrs. John Cook and the Everest Van Rippers.

**Sept. 21** - Chelsea Community Farm Bureau will be held Sept. 21 at 8 p.m. at Sylvan Town Hall. Hosts are Mr. and Mrs. John Cook and the Everest Van Rippers.

**Sept. 22** - Chelsea Community Farm Bureau will be held Sept. 22 at 8 p.m. at Sylvan Town Hall. Hosts are Mr. and Mrs. John Cook and the Everest Van Rippers.

**Sept. 23** - Chelsea Community Farm Bureau will be held Sept. 23 at 8 p.m. at Sylvan Town Hall. Hosts are Mr. and Mrs. John Cook and the Everest Van Rippers.

**Sept. 24** - Chelsea Community Farm Bureau will be held Sept. 24 at 8 p.m. at Sylvan Town Hall. Hosts are Mr. and Mrs. John Cook and the Everest Van Rippers.

**Sept. 25** - Chelsea Community Farm Bureau will be held Sept. 25 at 8 p.m. at Sylvan Town Hall. Hosts are Mr. and Mrs. John Cook and the Everest Van Rippers.

**Sept. 26** - Chelsea Community Farm Bureau will be held Sept. 26 at 8 p.m. at Sylvan Town Hall. Hosts are Mr. and Mrs. John Cook and the Everest Van Rippers.

**Sept. 27** - Chelsea Community Farm Bureau will be held Sept. 27 at 8 p.m. at Sylvan Town Hall. Hosts are Mr. and Mrs. John Cook and the Everest Van Rippers.

**Sept. 28** - Chelsea Community Farm Bureau will be held Sept. 28 at 8 p.m. at Sylvan Town Hall. Hosts are Mr. and Mrs. John Cook and the Everest Van Rippers.

**Sept. 29** - Chelsea Community Farm Bureau will be held Sept. 29 at 8 p.m. at Sylvan Town Hall. Hosts are Mr. and Mrs. John Cook and the Everest Van Rippers.

**Sept. 30** - Chelsea Community Farm Bureau will be held Sept. 30 at 8 p.m. at Sylvan Town Hall. Hosts are Mr. and Mrs. John Cook and the Everest Van Rippers.

## Fair Auction...

(Continued from page one)

M. Calla, 6th place pen, 635 pounds, \$361.95; Dan Cobb, seventh place pen, 670 pounds, Michigan Livestock, 65 cents, \$361.50.

Other lamb owners, the weight, the buyer, the price per pound and the total sale price are as follows: Kirk VanNatter, champion pen of three, 279 pounds, Thornton Real Estate, \$1,429; Steve Grau, reserve pen of two, 190 pounds, Merkel Bros., \$1,100; Elizabeth Schneider, fourth individual, 85 pounds, Farmers' Supply, 75 cents, \$63.75.

Tim Gross, third place pen of three, 285 pounds, Polly's, 60 cents, \$159; Pam Stoffer, fifth individual, 87 pounds, Ann Arbor Federal, 85 cents, \$73.95; Tim Grau, seventh individual, 100 pounds, Wolverine Bar, \$1,100.

Chris Grau, eighth individual, 94 pounds, Ann Arbor Seamless, \$1.13, \$103.40; Butch Gross, ninth individual, 92 pounds, Farmers' Supply, 90 cents, \$32.80; Matt Grau, 10th individual, 73 pounds, Dr. Flinn, \$1, \$78; Debbie Gross, 11th individual, 82 pounds, Trinkle Brothers, 74 cents, \$61.50; Ron Stoffer, 12th individual, 75 pounds, Elmer Dible, \$1, \$75; Amy Wolfgang, 13th individual, 71 pounds, Farmers' Supply, \$1.05, \$74.55.

**Mrs. Bruce Spencer**  
**Named to Dean's Honor List at Western Mich.**

Mrs. Bruce J. Spencer, the former Suzanne Liebeck, daughter of Mr. and Mrs. James P. Liebeck, 1732 Old US-12, received a 3.80 grade point while attending Western Michigan University this summer.

This academic achievement qualified her for the Dean's List.

Mrs. Spencer is a teacher in the Kalamazoo area.

## IN GOOD SUPPLY

Fresh sweet cherries are in good supply this year. In fact, this year's crop is nearly double that of last year.

## DEATHS

### Benedict C. Hachnle Dies Last Wednesday at Ann Arbor Veterans Hospital

Benedict C. Hachnle of 127 Owen Court, died Aug. 29 at the Veterans Hospital in Ann Arbor at the age of 60. He was born May 3, 1913, in Los Angeles, Calif., the son of Ben W. Hachnle and Ann O'Hara Hachnle.

Mr. Hachnle was a graduate of Assumption College and a veteran of World War II, during which he served in Italy and was awarded the Purple Heart.

He was employed by the Plumbing Co. in Chelsea until ill health forced him to retire in 1971. He was a member of the American Legion, Dexter Post 557.

Mr. Hachnle is survived by his widow, Florence; a son, David, of Jackson; a daughter, Mrs. L. O. (Janet) Kibler, also of Jackson; five grandchildren, and a brother, Winthrop, of Jackson.

Services were held Friday, Aug. 31, at 10 a.m. in St. Mary's Catholic church. The Rev. Fr. Robert Butler, C. S. R., officiated. Burial was Saturday, Sept. 1, in St. John's Cemetery at Jackson. Arrangements were made by Staffan Funeral Home.

### Harley L. Hone Dies at Nursing Home

Harley L. Hone, formerly of 103 W. Middle, died Aug. 29 at the Whitmore Lake Convalescent Home, at the age of 87. He was born April 23, 1886, in Bloomington, O., the son of Zachariah Hone and Columba Cleveland Hone.

Mr. Hone came to Chelsea in 1916, and worked at Chelsea Products until his retirement.

He is survived by his brother, Walter Hone, of Sidney, O.

Services were conducted Aug. 31 at the Pae Cemetery in Jackson Center, O. Arrangements were by Staffan Funeral Home.

### Mrs. Fred Pierce Native of Kansas Dies at Methodist Home

Mrs. Fred (Edith) Pierce died Aug. 31 at the Chelsea Methodist Home, at the age of 88. She was born in Blaine, Kans., on Oct. 11, 1884, the daughter of Henry Mann and Mary Parker Mann.

Services were conducted Monday, Sept. 3, at 11 a.m. at the Chelsea United Methodist Home.

The Rev. Richard L. Clemens officiated. Burial was at the Flat Rock Memorial Cemetery, Flat Rock. Arrangements were made by Staffan Funeral Home.

### Mrs. Archie Anderson Chelsea Woman's Daughter Dies at U. of M. Hospital

Mrs. Archie G. (Irene) Anderson died at University Hospital in Ann Arbor on Saturday, Sept. 1, at the age of 57. She was born April 5, 1916, in Champaign, Ill., the daughter of William and Irene (Belle) Brewer LaRoe.

Mrs. Anderson was active in numerous volunteer services in this area. Memorial contributions may be made to the Michigan Heart Association.

She is survived by two sons, George and Ralph, both of Saline; two daughters, Mrs. Robert (Carol) Marr of Chelsea and Mrs. James (Janice) Fullerton of Ann Arbor; 15 grandchildren; her mother, Mrs. William (Irene) LaRoe of Chelsea; one sister, Mrs. Walter (Mary) Mitchell of Ann Arbor; and five brothers, Rayda, Eugene, James, Clifford and Carl LaRoe, all of Washtenaw county.

Funeral services were held at 2 p.m. Wednesday from the Bahnmiller Funeral Home in Saline. The Rev. James A. Stacey officiated. Burial was in Oakwood Cemetery, Saline.

### Curren Hawkins Methodist Home Resident Dies Aug. 26 at Age 86

Curren Hawkins, a resident of the Chelsea United Methodist Home, died Aug. 26 at the age of 86. He had been a resident of the Home since July 10, 1973.

Mr. Hawkins was born Aug. 23, 1887, in Whitefish Point, the son of William Hawkins and Etna Powell Hawkins. He was married in 1938 to Josephine Romig.

He is survived by his widow, Josephine, and a daughter, Mrs. Lloyd Christensen of Ephraim, U.

Funeral services were conducted Aug. 27 at the Oak Grove Cemetery by the Rev. Robert N. Hickok.

### BOSO Carpet Cleaning

September - and the children are back in school. It's time to pay some attention to your carpeting. We recommend Host, the new method of cleaning carpets without water. The carpet is dry and ready to walk on immediately. Use our Host Electric Up-Brush. It's easy. Clean 40 sq. yds. only \$9.95. Phone for information.

### MERKEL BROTHERS



GRAND CHAMPION MARKET HOG, weighing in at 205 lbs., belonged to Carolyn Ennis, above, who sold her prize-winner to Jack Pascoe of Michigan Livestock for \$256.25.



RESERVE CHAMPION MARKET HOG was shown by Kathy McCalla for her brother Gordon, and was sold to Chelsea Bank for \$230.85. Gordon was at the Michigan State Fair when the picture was taken.

Arrangements were by Staffan Funeral Home.

### George F. Gooden World War I Veteran Dies Wednesday at Hospital

George F. Gooden, 419 Wilkinson, died Sept. 5, at the Chelsea Community Hospital at the age of 74. He was born June 27, 1899, in Illinois, the son of Frank Gooden and Annie Endean Gooden.

Mr. Gooden was a veteran of World War I and saw service in France. On Sept. 28, 1920, he was married to Lucy Overhouse.

He worked as a truck driver for Federal Mogul in Detroit, and later for Ann Arbor Federal Mogul, for a total of 45 years. He retired at 64. He then operated a mower and bike shop at 419 Wilkinson until the time of his death.

He was a member of the Herbert J. McKune Post 31, American Legion, and of the VFW Hoffman Post No. 116 of Detroit.

Mr. Gooden is survived by his widow, Lucy Overhouse Gooden; two sons, Robert, of East Detroit, and George, of Chelsea, and two grandchildren.

Services are scheduled for Saturday, Sept. 8, at 1 p.m. at Staffan Funeral Home. The Rev. George T. Nevill will officiate. Burial will be at Oak Grove Cemetery.

### NUTRITIOUS LAMB

A serving of lamb provides a high amount of protein and significant quantities of vitamin B-1, vitamin B-2, iron and calcium.

### Chelsea Police Officers Continue Education

Chelsea Police Officers Gerald Shaw and Roger Graves have been continuing their education this month.

Shaw attended a three-day course, Aug. 21-23, in arson and incendiaries at the Southeastern Criminal Justice Center. He completed the course successfully.

He also attended a one-day session in first aid with Roger Graves. Attendance at the training session was necessary to renew their first aid cards.

### John, Junior Joins Chelsea Police Force

John C. Dettling, Jr., fresh from Basic Police Training, has become the newest member of the Chelsea Police Force. His first day of duty was Sept. 1.

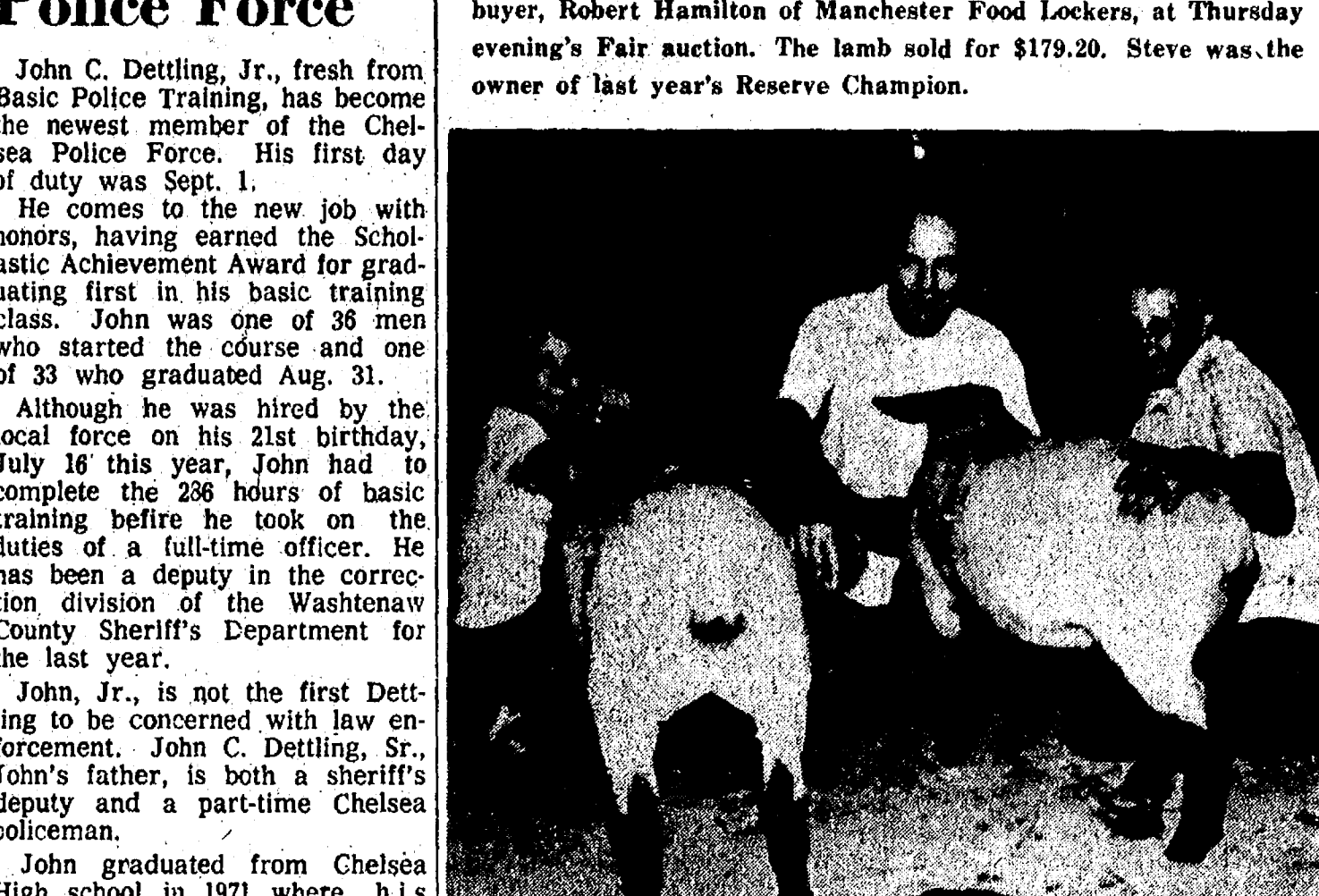
He comes to the new job with honors, having earned the Scholastic Achievement Award for graduating first in his basic training class. John was one of 36 men who started the course and one of 33 who graduated Aug. 31.

Although he was hired by the local force on his 21st birthday, July 16 this year, John had to complete the 236 hours of basic training before he took on the duties of a full-time officer. He has been a deputy in the correction division of the Washtenaw County Sheriff's Department for the last year.

John, Jr., is not the first Dettling to be concerned with law enforcement. John C. Dettling, Sr., John's father, is both a sheriff's deputy and a part-time Chelsea policeman.



STEVE GRAU and his Grand Champion lamb pose with the buyer, Robert Hamilton of Manchester Food Lockers, at Thursday evening's Fair auction. The lamb sold for \$179.20. Steve was the owner of last year's Reserve Champion.



STEVE GRAU'S RESERVE PEN of 2 brought \$190 from Merkel Brothers Furniture. Shown with Steve are Jack Merkel (center), and Danny Trinkle, (right).

## PUBLIC NOTICE

To all contributors to Chelsea Community Chest. Changes to the Chelsea Community Chest by-laws will be considered at a meeting Sept. 19, 7:30 p.m., upstairs in the Municipal Building. Of major importance is the proposed name change from Chelsea Community Chest to Chelsea United Way. The changes will concern operational procedures and will not alter the allocation of money to member agencies.

## Chelsea Community Chest

Roy Greenleaf, Publicity Chairman

## Small Fire Reported At E. Steffens Home

A small fire, Monday afternoon, in the basement of the Erving Steffens home, 3000 Sylvan Rd., destroyed a couch and caused minor smoke damage, according to Chelsea Fire Chief Jim Gaken.

Gaken said that the fire apparently began in a wastebasket in the basement and spread to the couch. Firemen doused the couch and then removed it in order to stop the blaze. No one was injured.

## GO GAMIBLES FOR SAVINGS

### West Bend Close-Out Specials

2 1/2 QT. TEA KETTLE \$13.95	SAUCETTE 1 1/2 qt. \$10.95
6 1/4" FRY PAN \$4.99	
Country Inn™	
OPEN STOCK COOKWARE	
2 1/2 qt. HI-BOY \$12.95	SAUCEPOT/SERVERS 2 1/2 qt. \$12.95 3 1/2 qt. \$13.95
...FROM WEST BEND	
DUTCH OVENS 5 qt. \$15.95 8 qt. \$19.95	CASSEROLES 2 1/2 qt. \$12.95 3 1/2 qt. \$13.95
SKILLETS 10" \$14.95 12" \$17.95	

## 25% OFF Reg. Price As Listed

SHOP NOW & SAVE - Quantities Limited To Supply on Hand

**NOW! KITCHEN CABINET HOT LINE**

**When You Need Cabinets Fast!**

**CHELSEA LUMER CAN DELIVER**

- ★ 6 GREAT KITCHENS
- ★ BY ARISTO-KRAFT & SHEIRICH
- ★ IN 3 WEEKS OR LESS\*

\* (INCLUDING YOUR CHOICE OF COUNTERTOPS)

**When You Think Kitchen, Think**

**CHELSEA LUMBER**

**FREE KITCHEN PLANNING SERVICE**

**475-1391**

With all the options and offers we can make, there's no reason why we'd guarantee you something we can't deliver. And we won't.

Everything we guarantee will be put down in writing. In a legal document you get a copy of. In language you can understand.

We think today's Army has a lot to offer you, and we'll try to convince you of that. But we'll never try to mislead you.

If you want to find out about some of our offers, see Sgt. Jones or Sgt. Williams at 212 S. 4th Ave., Ann Arbor, or call 665-3731.





**1101 M-52, Chelsea**  
Corner of M-52 and Old US-12  
**OPEN 8 to 10 Daily; 8 to 7 Sunday**

## THE PRICE BUSTERS

**FARMER PEET'S LITTLE RED BARN**  
THURS. SEPT. 6 THRU SEPT. 8  
FROM 12 NOON TO 6 P.M.  
**HOT DOG COKE**  
**15¢ 5¢**

**FARMER PEET'S SKINLESS FRANKS**  
12-Oz. Pkg. **88¢**  
LIMIT 1 EXP. 9-9-73  
SAVE 30¢

**POLLY'S FRESH GROUND HI-PRO BURGER MEAT LOAF** 3 Lbs. or More **99¢**  
Lesser amt. \$1.09 lb.

**HYGRADE'S VALLEY BROOK SEMI-BONELESS HAMS** . . . . .  
WHOLE, Lb. **\$1.19**  
HALF CUT, Lb. **\$1.29**

**QUARTERED PORK LOINS SLICED INTO PORK CHOPS** . . . . .  
Pkg. 9 to 11 Chops Lb. **\$1.18**

**MACINTOSH APPLES** . . . . .  
3-Lb. Bag **69¢**

**LARGE HOME-GROWN CAULIFLOWER** . . . . .  
Head **39¢**

**ELF ORANGE OR GRAPE FRUIT DRINK** . . . . .  
46-Oz. Can **25¢**

**ROMAN BLEACH** . . . . .  
Gal. **88¢**

**GREEN BEANS, PEAS, PEAS & CARROTS Fresh-Like Vegetables** . . . . .  
14-Oz. Can **4 for 99¢**

**BANQUET CHICKEN, TURKEY, BEEF, SALISBURY STEAK COOK N' BAGS** . . . . .  
5-Oz. Pkg. **4 for \$1.00**

**SEALTEST CHOCOLATE MILK** . . . . .  
4 Qts. for **\$1.00**

**BORDEN POP N' FUDGE** . . . . .  
24 Pk. **39¢**

**PUFFS FACIAL TISSUE**  
200 Ct. Box **3 for 79¢**  
LIMIT 3 EXP. 9-9-73  
SAVE 26¢

**MAXWELL HOUSE COFFEE**  
3-Lb. Can **\$2.39**  
LIMIT 1 EXP. 9-9-73  
SAVE 30¢

**BORDEN'S ELSIE ICE CREAM**  
1/2 Gal. **69¢**  
LIMIT 1 EXP. 9-9-73  
SAVE 30¢

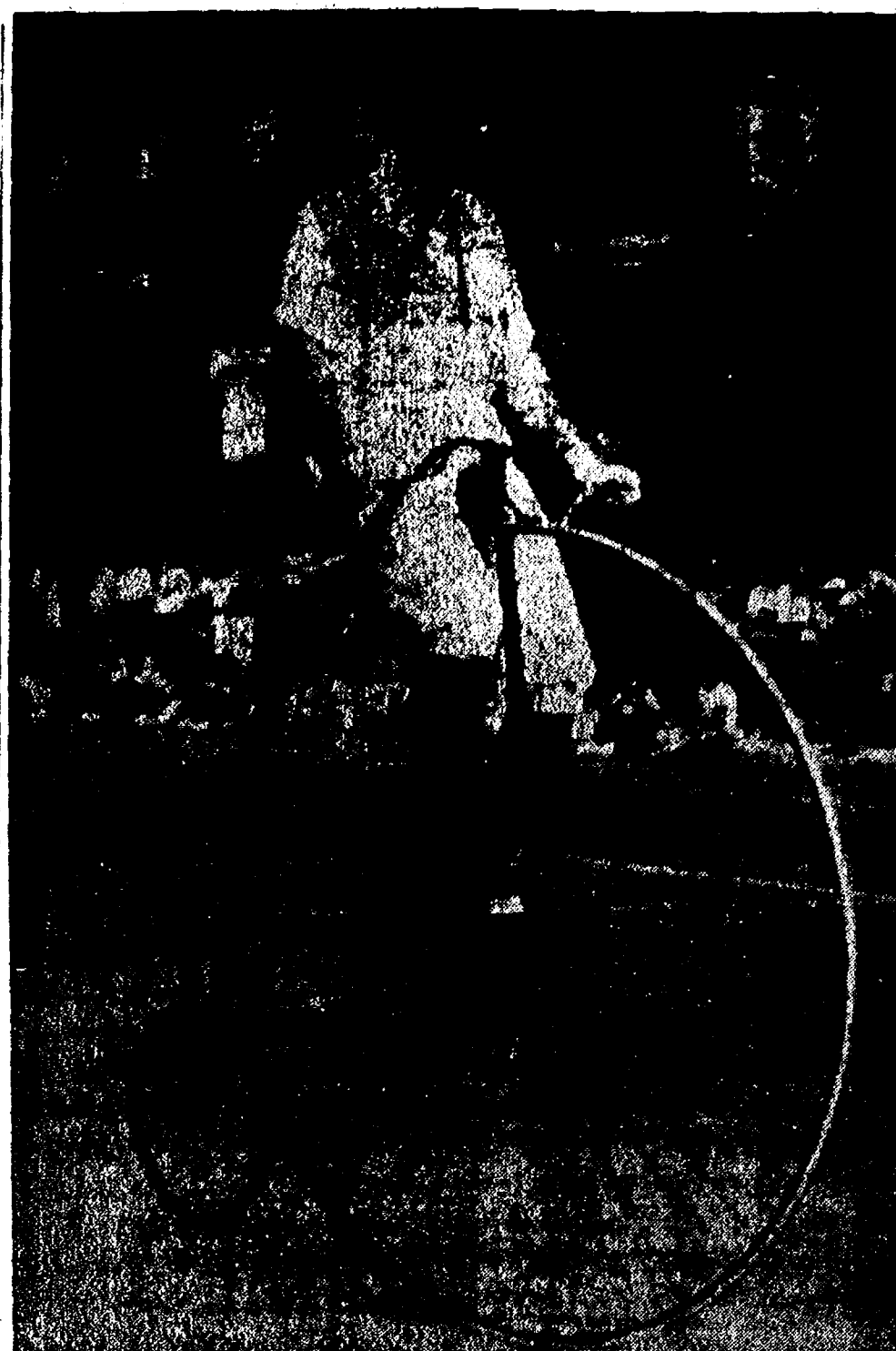
**POST SUGAR CRISP**  
10-Oz. **33¢**  
LIMIT 1 EXP. 9-9-73  
SAVE 10¢

**WISK LIQUID DETERGENT**  
32-Oz. **69¢**  
LIMIT 1 EXP. 9-9-73  
SAVE 17¢

**BURGER BITS DOG FOOD**  
25 Lb. **\$3.59**  
LIMIT 1 EXP. 9-9-73  
SAVE 40¢

## CHELSEA FAIR PRIZE WINNING LAMB SALE

4-H Lamb Shoulder Roast . . lb. \$1.28	4-H Rib Cut Lamb Chops . . lb. \$2.38
4-H Leg O Lamb . . . . lb. \$1.68	4-H Loin Cut Lamb Chops . . lb. \$2.58
4-H Shoulder Blade Chops . lb. \$1.48	4-H Tender Lamb Patties . . lb. 98¢
4-H Shoulder Round Bone Chops . lb. \$1.58	4-H Lamb for Stew . . . . lb. 88¢



**HIGH RIDER:** Ken McDowell got a special view of the parade Saturday by being part of it on his old-fashioned bicycle. His visored cap, string tie and knickers added to the flavor of the past.



**VISITING ROYALTY:** Raylene Jorgensen of Milan added her pretty smile to Saturday's Chelsea Community Fair Parade while sporting the Farm Bureau Queen banner. Raylene was elected to reign nearly a year ago but appears to have kept her enthusiasm for her "job." Farm Bureau was one of many organizations to have a booth at the fair.



**THE NEW LATEX WALL PAINT . . . . . WITH THE BUILT IN SECOND COAT**

**Dutch Boy NALPLEX**

NEW Dutch Boy NALPLEX, the latex flat wall paint with the BUILT IN SECOND COAT so high in building, so smooth in leveling one coat looks like two. Made specially for rollers, NEW NALPLEX virtually eliminates roller marks, splatter or spray. Dries in a jiffy. Scrubbable too. No mess either — clean hands, brushes, rollers with soap and water. Try it.

Depend on "Dutch Boy" more years to the gallon

**MERKEL BROS.**  
Phone 475-8621

Second Section

**The Chelsea Standard**

Pages 9-14

CHELSEA, MICHIGAN, THURSDAY, SEPTEMBER 6, 1973

## Arthur Schmunk Retiring from Chelsea Schools After 20 Years

For the first time in nine years, Arthur Schmunk wasn't in school yesterday to greet a new batch of fourth graders.

After 20 years with the Chelsea School District, he has retired.

The decision to step down from his teaching position was not easy, Schmunk says. One of the things he is badgered with second thoughts.

He is certain, however, that retirement won't be boring. "Advice is abundant these days about a new career," he says, "I've had a good offer or two, but I haven't made a choice." In the meantime he has three bee hives to tend, thanks to the parents of one of his students, and a collection of old automobiles to tinker with. How many does he have? "Drop by some day," he says.

It would not surprise those who know him well if Schmunk were suddenly to start afresh in an entirely new field and flourish. His life has been marked with surprising changes.

It all started on a farm in Paulding county, O., where Arthur Schmunk's father saw the youth as his successor. "Dad had me marked for the one to take over the farm since I was the only one of seven who did not go to high school."

But by the time young Arthur was 18, the family spread was too small so he says, "I went after a job with Swift and Co., in the produce business of poultry and eggs." In less than six months he was offered a foreman's job in their Lima, O., plant.

Schmunk suggests that the promotion came in spite of his age and because "strangely they had an estimate of 24 years as my age." From there he went to a machine shop job with Willys-Overland in Toledo and then to a similar position with American Broach Co., in Ann Arbor. By then he had reached the ripe old age of 20.

It was then that Schmunk got his first taste of exciting schooling. "Someone suggested that a good place to start an education was at Ferris Institute in Big Rapids," he recalls. "What a school! Adult men and women who had missed high school as youths could find their place in the world of skills. It was great to study psychology under Woodbridge N. Ferris who had been governor of Michigan and also U. S. Senator, and mathematics under former Lieutenant Governor Garrett Maslin."

The new-found delight in learning stayed with Schmunk for the next 15 years while he dropped in and out of school as his finances dictated. Simultaneously he was raising four children, honing his teaching skills, and dabbling in the building trades.

"Since there were no labor unions it was easy to do any type of work that one was capable of doing," Schmunk explains. "With two helpers we painted and papered most of the homes in Big Rapids."

After first teaching in a rural school for two years, Schmunk moved into teaching science and math on the secondary level. During that time he also served four years as principal and two years as superintendent in Big Rapids. "Update it was always the practice of administrators to teach at least half-time," he says.

Schmunk and his family found their way to Chelsea in 1953. He was elementary school principal until, as many remember, he resigned in 1964. "After 11 years as elementary principal and lack of local faith in the ungraded classroom which a citizen's group of 12 had studied for several months and approved," he recalls, "I felt it would be fun to work with kiddies at the eager, curious age of 10."

"It has been nine happy years," he says of his time teaching fourth grade. "Especially so because parents are so enthusiastic about the progress that is made with their children at this growing period."

"Our nation's wealth is in our youth and not in the industry which produces with amazing speed," he says.

His dedication to that conviction is so strong that one wonders how he'll be able to stay away.

Telephone Your Club News To 475-1371

### LOSE UGLY FAT OR PAY NOTHING

Start losing weight today OR MONEY BACK. MONDEX is a tiny tablet that will help curb your desire for excess food. Eat less, weigh less. Contains no dangerous drugs and will not make you nervous. No strenuous exercise. Change your life today. No start today. MONDEX costs \$3.00 for a 20 day supply and \$5.00 for twice the amount. Lose ugly fat or your money will be refunded with no questions asked by:

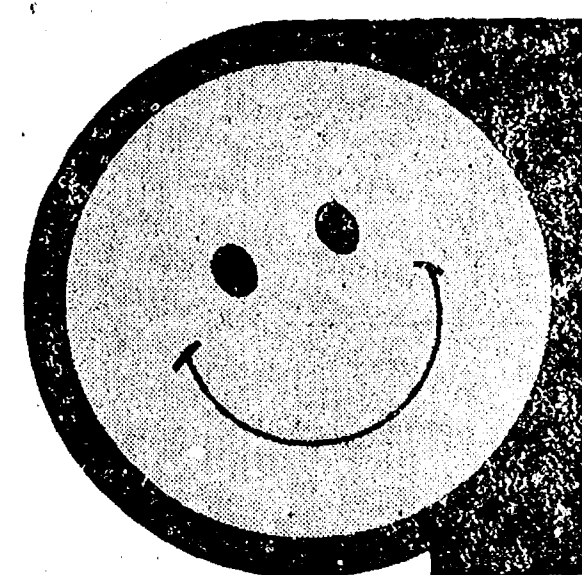
Chelsea Mail Orders Filled  
CHELSEA DRUG STORE



ARTHUR SCHMUNK



A VISIT TO CHELSEA proved profitable for Terry Neff, winner of the girl's bicycle provided by the Fair Board and Ingalls Amusements. Terry is visiting with friends in the area.



No matter what states you visit on vacation "no fault" insurance is no problem.

If your vacation this year takes you through states with "no-fault" insurance laws, you have no problem — if your auto is protected by Auto-Owners Insurance. Your Auto-Owners policy provides altogether protection automatically under its bodily injury and property damage liability coverages if you become subject to the laws of a no-fault state. Have a good vacation!

it's better altogether

### A. D. MAYER AGENCY, INC.

115 PARK ST., CHELSEA  
BOB BARLOW, AGENT  
PHONE 475-2030

Auto-Owners Insurance  
Life Home Car Business



Ad  
Taken  
TH 1 p.m.  
Tuesday

# USE ACTION-PACKED WANT ADS

Just  
Phone  
475-1371

## WANT ADS

### The Chatham Standard

**WANT AD RATES**  
Full page 100 lines for 14 days \$100.00  
Half page 50 lines for 14 days \$50.00  
Quarter page 25 lines for 14 days \$25.00  
Single line 1 line for 14 days \$1.00  
Special rates for long term contracts.  
Rates for color ads on request.  
Deadweight charges extra.  
Phone 475-1400 for details.

### GAR - NETT'S Flower & Gift Shop

Your Friendly Florist  
113 E. Middle St., Chelsea  
PHONE 475-1400  
Funeral Flowers  
Wedding Flowers  
Cut Flowers (arranged or boxed)  
Potted Flowering Plants  
Green Plants - Corsages  
WE DELIVER

WANTED - House in country with barn. Ph. 683-8853. 12

### Help Wanted

Retired man for part-time work repairing appliances (refrigerators, air conditioners, etc.). Call Mr. Bridges, 475-1847, Lloyd Bridges Traveland. 52tf

### Land Contract Available

NEWER 3-bedroom ranch. Kitchen has dishwasher, disposal, range and oven. Large rec-room, patio, 1 1/2 baths, attached garage. Well located. \$38,000. Part down.

FAMILY ROOM with brick fireplace and planter. Completely equipped kitchen. 1st floor laundry-sewing room. Full basement with garage. Country view with village water and sewer. Terms.

### CLARENCE WOOD BROKER

646 Flanders St.  
Phone 475-2093 12tf

### SANDE'S TEXAS TACK

Riding equipment for the Western horse.  
12005 Scio Church Rd.  
Corner Lima Center Rd.  
475-2596  
Open 7 days a week. -13

WANTED-Girl for general office work. Typing, etc. Will train. In Dexter area. Call 475-8551 after 6 p.m. for appointment. x12

### See What's New for Fall

at  
DANCER'S

## WANT ADS

MINI-BIKER, used, \$29.95 to \$69.95. 28. Coffman's Sports Center, 10111 Leaning Ave., Jackson, Mich. 48111 4-8, Sunday, 12-4. x40tf

### FORMAL WEAR

RENTAL SERVICE  
Proms - Weddings - Special Events  
6 different colors.

### Foster's Men's Wear

Special of the Week  
1972 Datsun Wagon - Automatic  
\$2295

### USED CARS

1971 BUICK LeSabre Custom 4-dr. hardtop, air cond. \$2595  
1971 BUICK LeSabre 4-dr. sedan \$2195  
1970 FORD Maverick 6-cyl., 3-speed, 33,000 miles \$1295  
1969 CHEV Impala convert-ible \$1195  
1969 OLDS Delta 88 4-dr. hardtop, air cond. \$1295  
1969 OLDS Delta 88 2-dr. hardtop \$1095  
1969 OLDS Luxury 88 4-dr. hardtop, air cond. \$1295  
1969 BUICK LeSabre 4-dr. hardtop, air cond., 45,000 miles \$1495  
1968 BUICK Skylark 4-dr. sedan, air cond. \$1195  
1968 BUICK LeSabre 4-dr. sedan, air cond. \$695  
1968 OLDS Delmont 88 4-dr. sedan \$595  
1967 OLDS Cutlass Supreme, 43,000 miles \$995  
1965 BUICK Sport Wagon, air cond. \$495  
1964 PONTIAC Catalina 2-dr. hardtop \$295  
Sales & Service-Mon, Tues., Wed. and Fri. 8:00-5:30  
Thurs. till 9:00  
Sales-Saturday 8:00-3:30  
Sales-Open evenings by appointment.

### SPRAGUE Buick-Olds-Opel, Inc.

Phone 475-8864  
1500 S. Main St., Chelsea 12tf

SPOTS before your eyes-on your new carpet-remove them with Blue Lustre. Rent electric shampooer. \$1. Dancer's. 12

HELP WANTED-Female, for light house-cleaning one day a week, in Chelsea area. Will furnish transportation to and from work if required. State hourly rate. Reply Box. No. 52, Chelsea Standard. -13

### Part-Time Instructors

Soliciting applications to teach related instructional classes for Apprenticeship:

PLUMBERS  
PIPEFITTERS  
STEAMFITTERS  
SPRINKLERFITTERS

Applicants need be journeyman or equivalent with trade experience. Send resume to:

Washtenaw  
Community College

Personnel Office  
Ann Arbor, Michigan 48106 x12

## WANT ADS

### KNAPP SHOES

For Cushion Comfort  
Robert Robbins  
475-7282 48tf

### INVENTORY REDUCTION SALE

TOP TRADE-INS  
BRING YOUR TITLE!

Demos at  
Tremendous Savings

### Quality Used Cars

'73 PLYMOUTH Fury III 4-dr. sedan, 360, auto., p.s., p.b., air cond., vinyl roof, 5,000 miles. Drive-Ed. car.  
'72 DUSTER Sport Coupe. Gold Duster package, 225, auto., p.s., low mileage \$2395  
'72 PLYMOUTH Gran Coupe, 400, auto., p.s., p.b., air, vinyl roof, tinted glass, radio. Sharp \$2095  
'72 MERCURY Sheriff cars. 4-dr. hardtop, V-8, auto., p.s., p.b., air cond. Excellent transportation \$1295  
'71 PLYMOUTH Satellite Sebring Plus 2-dr. hardtop, 318, auto., p.s., buckets, console, Rallye wheels, new tires \$1895  
'71 VW Super Beetle, sharp, custom paint job \$1795  
'71 DODGE B-100 Sportman wagon, 225, 3-speed, radio, new tires, 5-pass. \$2195  
'70 FORD Galaxy 500 4-dr. sedan, V-8, auto., p.s., p.b. 2 to choose from \$1095  
'70 DUSTER sport coupe 318, auto., p.s., 30,000 miles and sharp \$1895  
'70 DODGE Coronet Crestwood, 9-pass wagon 318, auto., p.s., p.b., air cond. \$1495  
'69 CHEVY Impala 2-dr. hardtop, V-8, 4-speed, buckets, console. \$595  
'69 DODGE D-200 pickup, 318, auto. \$695  
'69 BUICK Sports Wagon, V-8, auto., p.s., p.b., air cond. \$1395  
'69 CHRYSLER New Yorker 4-dr., full power, air cond., vinyl roof \$995  
'68 CHEVY Impala SS, V-8, auto., good transportation \$395  
'68 DODGE Coronet Crestwood 6-pass. wagon, 318, auto., p.s., good transportation \$595  
'67 IHC 1/2-ton pickup, V-8, 4-speed, heavy duty suspension and tires, very clean \$795

### Transportation Specials

'64 CHEVY 2-dr. sedan, 6-cyl., stick \$95  
'64 FORD 4-dr., V-8, auto., p.s. \$95

### Recreational Vehicles

'72 24' CORSAIR travel trailer, used 45 hrs., like new, completely equipped including add-a-room. Save!

### Cry-Star Van Conversion

now in stock.  
Completely equipped.

### Village Motor Sales, Inc.

IMPERIAL - CHRYSLER  
DODGE - PLYMOUTH  
Phone 475-8861  
1185 Manchester Rd., Chelsea  
Hours: 8 a.m. to 6 p.m.  
Tues. thru Fri. Until 9 Monday.  
9 a.m. to 2 p.m. Saturday x11tf

### Choice Small Farm

3.5 ACRES with house and a new 30 x 50 barn. Many lovely trees. Just three miles west of Grass Lake. Only \$28,500.00. x12

### Willis Real Estate

617-522-8481 x12

### ELECTROLUX VACUUM CLEANERS

SALES and SERVICE  
JAMES OOX  
Ph. 428-2931 or 428-8221  
Ann Arbor, Mich.

### Always at Your Service on the Double Quick!

Looking for heads-up auto service? Look no further. That's why Always on our toes to serve you promptly, efficiently, courteously!

### UNION 76 OIL PRODUCTS

### Jim's Union 76 Service

Tires - Batteries - Tune-Ups - Brake Service - Wheel Alignment  
PHONE 475-2822 501 SOUTH MAIN



"Don't eat too much of that cake I got at that bakery I saw in the Standard Want Ad. You know angel food doesn't agree with you!"

## WANT ADS

GARAGE SALE-Sept. 8-9. Kitchen set, sewing machine and other furniture. Rug frame. Rags for hooking and braiding. Quilt pieces, many other miscellaneous. 528 McKinley, Chelsea. x12

## WANT ADS

ENGLE  
Garage Builders  
208 Pineridge  
Ann Arbor  
663-4150  
House and Barn Roofing  
All types of roof repair  
Aluminum siding and gutters  
Awning - Porch Enclosures  
Garage and Room Additions  
Cement Work  
Call Joe Hayes  
for Free Estimates. x5tf

## REAL ESTATE

LAKES  
NORTH LAKE-2-bedroom, quality brick, dining el.  
NORTH LAKE - 3-bedroom, 2 baths, dining room, family room.  
CAVANAUGH LAKE-4-bedroom, dining el, family room, new carpeting.  
CAVANAUGH LAKE-3-bedroom, family room, fireplace, 160' frontage.  
SOUTH LAKE-2-bedroom, detached guest house, 2 baths.  
10 ACRES-NEW 3-bedroom, 2 1/2 baths, dining room, family room.  
5 ACRES-3-bedroom, beautiful restored Early American home, Manchester.  
5 ACRES-2-bedroom, in area of new homes. \$26,900.  
3 ACRES-11-room home, could be 2-family, Chelsea schools. \$39,900.  
2.7 ACRES-2-bedroom, family room, barn, workshop, Stockbridge schools.  
2.5 ACRES-2-bedroom, 4 miles south of Manchester. \$13,900.  
2.5 ACRES-3-bedroom ranch, family room, Manchester schools.  
2 ACRES-4-bedroom, hilltop setting, 2 1/2 baths, 38' deck, Chelsea schools.  
1.5 ACRES-Dexter schools, 4 bedrooms, brick and cedar colonial.  
1 ACRE-Stockbridge schools, 2-bedroom Cape Cod, breezeway and attached garage.  
196 ACRES-Well-kept farm, beautiful older remodeled home.  
71.7 ACRES-4-bedroom home, 8-stall horse barn.  
45 ACRES - 3-bedroom home, barns, plus 1-bedroom income apartment.  
42.5 ACRES-Operating orchard, 3-bedroom home plus storage.  
40 ACRES-Dexter schools, 2-bedroom, pond site and woods.

## HELP WANTED

Manager for Appliances Dept. of a large local discount store. Experience not necessary, but is desirable. General benefits and starting salary.  
Inquire at  
K-MART  
215 N. Maple Rd., Maple Village  
Ann Arbor  
Mon. - Fri., 10-5 8tf

TO BE GIVEN AWAY-German Shepherd pups, also mother, to good homes. 475-7492. -12  
UPSTAIRS APT. for rent. No children, no pets. Call 475-8210 after 7 p.m. 10tf  
T & G ROOFING, Painting for fast, good low cost service. Roofing, painting, apartment painting lower than ever. Call now to get the job done and done right. Ph. (517) 851-8851. x12

## Assembly

Reliance Electric Company is presently interviewing for openings in its assembly operation. High school graduates who have a minimum of one year electronics schooling or experience are preferred. Wage scales are commensurate with applicable experience. Apply in person between 8 a.m. and 3 p.m.  
Reliance Electric Co.  
750 N. Maple Rd., Saline, Mich.  
An Equal Opportunity Employer x10tf

HELP WANTED-Big sisters needed to supervise two school-age children occasionally after school, handle dinner hour. Flexible school night curfew, 12 midnight to 1 a.m., stay week-ends or travel with us. Good pay for fun, easy work. Call 475-1856 after 6 p.m. x12

## STROUT REALTY

P. O. Box 2757  
Springfield, Missouri 65803 13

HOUSE FOR RENT-2-bedroom home at secluded Half Moon Lake. Carpeting, range, refrigerator, and gas forced-air furnace. Workshop, tool shed, large garden and fruit trees. Available Nov. 1, couple preferred. No children or pets. \$275 per month. 475-2186 evenings and week-ends. x10tf

FOUND-Female cat. Part Siamese, light tan fur, round face, blue eyes. Very affectionate. Island Lake near North Territorial. Call 475-1856 after 6 p.m. x13

## Fortune Industries, Inc.

11770 Dexter Rd., Chelsea  
Ph. 475-8619 x12

1973 VACUUM CLEANER, \$24.50 -Brand new sweeper, paint damage in shipment. Excellent working condition. Includes all cleaning tools plus rug shampooer. Cash price \$24.50 cash or terms arranged. Trades accepted. Call Ypsilanti collect, 482-8597, 9 a.m. to 9 p.m. Electro Grand. 12

## Big Selection of Men's Dress & Sport Shirts

MAIN FLOOR  
DANCER'S

## SCHNEIDER'S GROCERY

CHOICE MEATS - FINE FOODS

ECKRICH  
Smorgas Pac... \$1.29  
FARMER PEET'S RE-PEETER  
Bacon . . . . lb. \$1.19  
McDONALD'S VANILLA  
Ice Cream, 1/2 gal. 87c  
12-OZ. CANS  
Coke . . 12 pac \$1.39  
MICHIGAN GROWN  
Cantaloupe . . ea. 49c

3-LB. BAG  
Yellow Onions... 39c  
12-OZ. CANS  
7-up  
Orange Crush 6 pac  
Frostie 69c

LARGE SELECTION  
AWREY  
BAKED GOODS  
CAKES PIES - ROLLS  
COOKIES - DONUTS - BREADS

Phone 475-7600  
121 S. Main St.

Your Store for  
Alexander & Horning  
Smoked Meats

We Accept U.S.D.A.  
Food Coupons

## WANT ADS

### CLOGGED SEWER

Reynolds Sewer  
Service

We Clean Sewers Without Digging  
Drains Cleaned Electrically  
FREE ESTIMATES  
2-YEAR GUARANTEE  
Phone Ann Arbor NO 2-5277  
"Sewer Cleaning Is Our Business - Not a Side-Line" 38tf

FOR RENT - Large unfurnished 2nd floor apartment for married couple. Heat furnished, no children, no pets. Ph. 475-8469 after 6 p.m. 7tf

### Certified Wheat Seed

Ionia and Genesee varieties.  
Place your orders now.

### Farmers' Supply Co.

Phone 475-1777 x12

### Attention High School Graduates

K-Mart's Men's Wear Dept. is looking for an ambitious high school graduate. Fast advancement. Company paid Blue Cross and Blue Shield. Other company benefits.  
Inquire at  
K-MART  
215 N. Maple Rd.  
Ann Arbor, Mich.  
Monday - Friday, 10-5 8tf

### Real Estate Brokers or Salesmen

Eligible to write Broker Exam . . .

### How Big Is BIG MONEY?

To some people it is making \$1,000 a month. To others \$5,000 a month, right in their own hometown. We have both kinds.  
So it's Opportunity if you qualify for the STROUT Team. Not everybody does. But ask yourself if you are ready for your real estate license to start bringing you important money. Ask too, do you really like People? And do you have Common Sense?  
If yes, then ask for information on the "People-Business." It's mailed without obligation. Could be the start to Something Big-with the World's Largest.

### Willis Real Estate

Grass Lake, Michigan  
617-522-8481 x12

### Accountant

Work consists of general accounting functions, sales reports, month-end journal entries, inventory, accounts receivable and accounts payable. Usual fringe benefits.  
Contact Tom Goodwin  
between 8:30 a.m. and 4:30 p.m. weekdays.

### Fortune Industries, Inc.

11770 Dexter Rd., Chelsea  
Ph. 475-8619 x12

### Good Selection New YARD GOODS & NOTIONS

Sew & Save!  
BASEMENT  
DANCER'S 12

### HALF MOON LAKE-FRONT home

-Owner forced to sell because of illness. Extra lot included. \$35,000. Call 475-8310 or 971-3791. x12

### Signs Painted 475 - 7391

A fine selection of  
New and Used Cars  
for immediate delivery

### Harper Pontiac Sales & Service

475-1306  
Evenings, 475-1608 22tf

### HILLTOP, INC.

Septic tanks: 600 gal. to 2,000 gal., and drain fields, installed to county code. Basements; road building; trenching; 12" and up. Buried oil tanks: 300, 500, and 1,000 gal. Trucking, stone, road gravel, and top soil. Estimates and reasonable rates. Licensed, bonded and insured.

1414 South Main  
Chelsea, Mich.  
475-2949 x19

### SHOES FOR REPAIR picked up and delivered every Monday at Parish's Cleaners, 113 Park St.

### REAL ESTATE

80-FOOT lake-front building site, well wooded, three minutes from Chelsea. Adjacent to state land. \$12,500.  
4-5-BEDROOM home, needs work, on approximately one acre. Stockbridge schools. \$16,900.  
DEXTER SCHOOLS-Northwest of town, 10-acre parcels, some high and rolling with trees, all good building sites. Land contract.  
STOCKBRIDGE AREA, 50 acres, includes lots of trees, some marsh and several building sites, state land borders two boundaries, \$850 per acre.  
2-ACRE building site, high rolling and wooded. Chelsea schools. \$7,000. Land contract.  
10-ACRE building sites, some high and rolling, some with trees and pond, on hard surfaced road. Chelsea schools. Land contract.  
13-ACRE building site, very nice and beautiful roll, 5 1/2 miles from Chelsea. Land contract.

### WATERLOO REALTY

JoAnn Warywoda, Broker  
475-7493 x12

### Staffan Funeral Home

"Funeral Directors for Four Generations"  
124 PARK STREET  
PHONE GR 5-4417

### Your Confidence

... base it  
on our long record  
of personal service.



### WANT ADS

**Automotive  
Fast Financing  
Cars and Trucks**

**Village  
Motor Sales, Inc.**  
1000 W. Main St., Chelsea, Mich. 48118  
Phone 475-1301

**ACCOUNTING  
CLERK - TYPIST**

**Industrial Plastics Co.**

1000 W. Main St., Chelsea, Mich. 48118

PLASTIC SERVICE - We have a large stock of plastic materials for sale. We also have a large stock of plastic materials for sale.

WANTED - A person to work in our plant. Must be experienced in plastic work. Call 475-1301.

WANTED - A person to work in our plant. Must be experienced in plastic work. Call 475-1301.

WANTED - A person to work in our plant. Must be experienced in plastic work. Call 475-1301.

WANTED - A person to work in our plant. Must be experienced in plastic work. Call 475-1301.

WANTED - A person to work in our plant. Must be experienced in plastic work. Call 475-1301.

WANTED - A person to work in our plant. Must be experienced in plastic work. Call 475-1301.

WANTED - A person to work in our plant. Must be experienced in plastic work. Call 475-1301.

WANTED - A person to work in our plant. Must be experienced in plastic work. Call 475-1301.

WANTED - A person to work in our plant. Must be experienced in plastic work. Call 475-1301.

WANTED - A person to work in our plant. Must be experienced in plastic work. Call 475-1301.

WANTED - A person to work in our plant. Must be experienced in plastic work. Call 475-1301.

WANTED - A person to work in our plant. Must be experienced in plastic work. Call 475-1301.

WANTED - A person to work in our plant. Must be experienced in plastic work. Call 475-1301.

WANTED - A person to work in our plant. Must be experienced in plastic work. Call 475-1301.

WANTED - A person to work in our plant. Must be experienced in plastic work. Call 475-1301.

WANTED - A person to work in our plant. Must be experienced in plastic work. Call 475-1301.

WANTED - A person to work in our plant. Must be experienced in plastic work. Call 475-1301.

WANTED - A person to work in our plant. Must be experienced in plastic work. Call 475-1301.

WANTED - A person to work in our plant. Must be experienced in plastic work. Call 475-1301.

WANTED - A person to work in our plant. Must be experienced in plastic work. Call 475-1301.

WANTED - A person to work in our plant. Must be experienced in plastic work. Call 475-1301.

WANTED - A person to work in our plant. Must be experienced in plastic work. Call 475-1301.

WANTED - A person to work in our plant. Must be experienced in plastic work. Call 475-1301.

WANTED - A person to work in our plant. Must be experienced in plastic work. Call 475-1301.

WANTED - A person to work in our plant. Must be experienced in plastic work. Call 475-1301.

WANTED - A person to work in our plant. Must be experienced in plastic work. Call 475-1301.

WANTED - A person to work in our plant. Must be experienced in plastic work. Call 475-1301.

WANTED - A person to work in our plant. Must be experienced in plastic work. Call 475-1301.

WANTED - A person to work in our plant. Must be experienced in plastic work. Call 475-1301.

WANTED - A person to work in our plant. Must be experienced in plastic work. Call 475-1301.

WANTED - A person to work in our plant. Must be experienced in plastic work. Call 475-1301.

### WANT ADS

**LEHMAN WAHL  
Land Appraisal  
Residential  
and Farm**

1000 W. Main St., Chelsea, Mich. 48118  
Phone 475-1301

**Chelsea  
Associated Builders**

1000 W. Main St., Chelsea, Mich. 48118  
Phone 475-1301

SEE FRANK for all your home improvement needs. We have a large stock of materials for sale.

SEE FRANK for all your home improvement needs. We have a large stock of materials for sale.

SEE FRANK for all your home improvement needs. We have a large stock of materials for sale.

SEE FRANK for all your home improvement needs. We have a large stock of materials for sale.

SEE FRANK for all your home improvement needs. We have a large stock of materials for sale.

SEE FRANK for all your home improvement needs. We have a large stock of materials for sale.

SEE FRANK for all your home improvement needs. We have a large stock of materials for sale.

SEE FRANK for all your home improvement needs. We have a large stock of materials for sale.

SEE FRANK for all your home improvement needs. We have a large stock of materials for sale.

SEE FRANK for all your home improvement needs. We have a large stock of materials for sale.

SEE FRANK for all your home improvement needs. We have a large stock of materials for sale.

SEE FRANK for all your home improvement needs. We have a large stock of materials for sale.

SEE FRANK for all your home improvement needs. We have a large stock of materials for sale.

SEE FRANK for all your home improvement needs. We have a large stock of materials for sale.

SEE FRANK for all your home improvement needs. We have a large stock of materials for sale.

SEE FRANK for all your home improvement needs. We have a large stock of materials for sale.

SEE FRANK for all your home improvement needs. We have a large stock of materials for sale.

SEE FRANK for all your home improvement needs. We have a large stock of materials for sale.

SEE FRANK for all your home improvement needs. We have a large stock of materials for sale.

SEE FRANK for all your home improvement needs. We have a large stock of materials for sale.

SEE FRANK for all your home improvement needs. We have a large stock of materials for sale.

SEE FRANK for all your home improvement needs. We have a large stock of materials for sale.

SEE FRANK for all your home improvement needs. We have a large stock of materials for sale.

SEE FRANK for all your home improvement needs. We have a large stock of materials for sale.

SEE FRANK for all your home improvement needs. We have a large stock of materials for sale.

SEE FRANK for all your home improvement needs. We have a large stock of materials for sale.

SEE FRANK for all your home improvement needs. We have a large stock of materials for sale.

SEE FRANK for all your home improvement needs. We have a large stock of materials for sale.

SEE FRANK for all your home improvement needs. We have a large stock of materials for sale.

SEE FRANK for all your home improvement needs. We have a large stock of materials for sale.

SEE FRANK for all your home improvement needs. We have a large stock of materials for sale.

SEE FRANK for all your home improvement needs. We have a large stock of materials for sale.

SEE FRANK for all your home improvement needs. We have a large stock of materials for sale.

SEE FRANK for all your home improvement needs. We have a large stock of materials for sale.

SEE FRANK for all your home improvement needs. We have a large stock of materials for sale.

SEE FRANK for all your home improvement needs. We have a large stock of materials for sale.

SEE FRANK for all your home improvement needs. We have a large stock of materials for sale.

SEE FRANK for all your home improvement needs. We have a large stock of materials for sale.

### WANT ADS

**NOW  
Full Time  
Complete  
Body Shop  
Service**

See us for an estimate

**PALMER FORD**  
222 E. Main St.  
475-1301

**CUSTOM  
BUILDING  
LICENSED & INSURED  
FREE ESTIMATES**

**TOTAL  
CONSTRUCTION  
SERVICES**

**SLOCUM  
CONTRACTORS  
& BUILDERS**  
Serving Washtenaw County  
For Over 20 Years  
20700 OLD US-12  
CHELSEA  
Phone 475-8321 or 475-7611

**NEW and REMODELING  
Residential  
Carpenter Contractor**

**M. A. LAWRENCE**  
1-317-522-4304

**WANTED - Man for general car-**

**15-ACRE parcel and a 30-acre parcel.**

**13 ACRES with flowing stream.**

**4-BEDROOM brick home, 2-car garage,**

**15775 Cavanaugh Lake Rd.**

**Siding, Roofing  
and Gutters**

**Mills  
Construction Co.**

**THE LITTLE  
FLOWER SHOP**

**3451 Waltrous Rd., Chelsea**

**We Deliver and Wire  
Flowers, Corsages, Arrangements  
and Plants.**

**Weddings and Funerals.**

**HOUSE FOR SALE in Stockbridge**

**FOR REAL DOLLAR SAVINGS**

**REDWOOD DECKS by a deck expert.**

**TYPIST NEEDED, full or part-time.**

**WANTED - First quality hay.**

**WANTED TO RENT - House to rent.**

**WILL BABYSIT in my own country home.**

### WANT ADS

**Gem Travel Trailers  
and Campers**

**PICK UP COVERS**

**Triangle Sales**

**VACUUM CLEANERS - Electro-**

**CAR RENTAL by the day, week-**

**Complete  
Body Repair  
Service**

**Bumping - Painting  
Windshield and Side Glass  
Replacement**

**Free Pick-up & Delivery  
Open Monday Until 9**

**CONTACT DON KNOLL  
FOR FREE ESTIMATE**

**Village  
Motor Sales, Inc.**

**IMPERIAL - CHRYSLER  
DODGE - PLYMOUTH**

**1185 Manchester Rd., Chelsea**

**Hours: 8 a.m. to 6 p.m.  
Tues. thru Fri. Until 9 Monday.  
9 a.m. to 2 p.m. Saturday**

**MINI-BIKES - Special, \$99.95,**

**REPAIR SERVICE for household**

**Headquarters for  
RED WING  
WORK SHOES**

**Foster's Men's Wear**

**SEWS STRETCH MATERIAL**

**7-1873 SELECT - O. STITCH,**

**Ann Arbor  
Machinery Co.**

**78 Jackson Plaza**

**CLOSEOUT  
Builder's Model**

**IN BEFORE SCHOOL**

**Two acre site, Chelsea area, 3-**

**Now under construction. Chelsea**

**WEBER HOMES**

**PICK-UP CAMPER TOPS \$89.95,**

**SQUARE DANCE classes, Western**

**FOR REAL DOLLAR SAVINGS**

**REDWOOD DECKS by a deck expert.**

**TYPIST NEEDED, full or part-time.**

**WANTED - First quality hay.**

**WANTED TO RENT - House to rent.**

**WILL BABYSIT in my own country home.**

### WANT ADS

**ELECTRICAL WIRING of all**

**EVINGER REAL ESTATE, Alpine**

**SEE US for transit mixed concrete.**

**TRAVEL TRAILERS - 13-ft. and**

**WANTED - Carpentry work, any**

**FOR SALE - 1 acre building site,**

**STOCKBRIDGE, 15 acres, commercial,**

**PIANO TUNING, Chelsea and area.**

**ASPHALT PAVING**

**Driveways - Parking Areas  
Landscaping - Site Work**

**PREVO EXCAVATING CO.**

**(517) 851-8608 or (313) 453-1027**

**ALLSTATE  
INSURANCE**

**AUTO - BOAT - COMMERCIAL  
LIFE - HEALTH - HOME**

**Phone Eves. or Week-ends for**

**N. H. MILES, Agent**

**GR 5-8334**

**FOR SALE - Indian cents, post-**

**SEAMLESS ALUMINUM Eaves-**

**Tool Makers &  
Machinists**

**All classifications, top rates and**

**Ann Arbor  
Machinery Co.**

**78 Jackson Plaza**

**CLOSEOUT  
Builder's Model**

**IN BEFORE SCHOOL**

**Two acre site, Chelsea area, 3-**

**Now under construction. Chelsea**

**WEBER HOMES**

**PICK-UP CAMPER TOPS \$89.95,**

**SQUARE DANCE classes, Western**

**FOR REAL DOLLAR SAVINGS**

**REDWOOD DECKS by a deck expert.**

**TYPIST NEEDED, full or part-time.**

**WANTED - First quality hay.**

**WANTED TO RENT - House to rent.**

**WILL BABYSIT in my own country home.**

### WANT ADS

**SECURITY  
GUARDS**

**Chelsea, Manchester  
Whitmore Lake areas.**

**Phone 761-5315  
for appointment,  
or apply at**

**200 S. Wagner Rd.  
Ann Arbor**

**SANFORD SECURITY SERVICE,  
INC.**

**4534 Dexter Township Rd.  
Phone Dexter 426-4268**

**Complete line of English and**

**Store Hours: Mon.-Sat., 9-9  
Sunday, 10-9**

**Screw Machine  
Operators**

**We are presently seeking either**

**Dexter Automatic  
Products Co.**

**3045 Broad St.  
Dexter, Michigan, 48130**

**(313) 426-4637**

**An Equal Opportunity Employer.**

**WAITRESS WANTED, evening**

**USED CARS  
and TRUCKS**

**BOUGHT and SOLD**

**KETO, INC.**

**8080 Grand  
DEXTER**

**Phone 426-4636**

**CAR & TRUCK LEASING. For**

**MODERNIZE  
YOUR HOME**

**Remodeling inside and out.**

**AWNINGS - PATIOS**

**Basements, under existing**

**FREE ESTIMATES  
BANK TERMS**

**No money down, bank financing.**

**Ken McDonough**

**770 Oak Hill Dr.  
Brooklyn, Mich. 48230**

**CUSTOM BUILT HOMES**

**O-H! We Remodel too.**

**U-can count on us**

**N-o Job Too Small**

**T-rim Inside & Out**

**R-ough-in Only If**

**Y-ou Want to Finish**

**S-iding Aluminum, 5" Gutters**

**I-mmediate Attention**

**D-ALE COOK & CO.**

**E-estimates, Free**

**BUILDERS**

**Please Call**

**475-8863**

**DALE COOK**

### WANT ADS

**FOR RENT - Fair Service Center**

**receptions, etc. Weekdays or week-**

**CONTACT John Welton, phone**

**HAMMOND ORGAN teachers**

**wanted to teach in their own**

**Call Grinnell Brothers, Ann**

**Arbor, 662-6667.**

**Fireplace Builder**

**Field stone mason, block and brick**

**mason, tuck pointing.**

**FREE ESTIMATES**

**Call 475-8025 after 3 p.m.**

**Patrick Grammatico**

**4534 Dexter Township Rd.**

**Phone Dexter 426-4268**

**Complete line of English and**

**Store Hours: Mon.-Sat., 9-9**

**Sunday, 10-9**

**Screw Machine  
Operators**

**We are presently seeking either**

**Dexter Automatic  
Products Co.**

**3045 Broad St.  
Dexter, Michigan, 48130**

**(313) 426-4637**

**An Equal Opportunity Employer.**

**WAITRESS WANTED, evening**

**USED CARS  
and TRUCKS**

**BOUGHT and SOLD**



Wanted Girl Scout Leaders

Thousands of men and women have brightened their lives and the lives of others by becoming Girl Scout Leaders. Also wanted are Assistant Leaders and Helpers. For information, without obligation, on how you can become a Girl Scout Leader, just mail the coupon below. For a quick information, telephone your local Girl Scout Council.

Real Estate

Howell Town & Country, Inc. CARL WIEDMAN Local Representative Phone 475-3177 436-3718 evenings

CONValescent HOME new open. Have been temporarily closed for remodeling. Special care and good food. Reasonable rates. 475-1503.

A & K MOWER SERVICE—All types of small engine repairs. Free pick-up and delivery. 475-5522.

DISHWASHER WANTED—Also, part-time waitress. Apply in person. Chelsea Restaurant. 1015

EXPERIENCED PAINTER will do large or small jobs. Interior or exterior. Can furnish local reference. 475-1503.

TOMATOES, by peck or bushel. Also, cabbage and corn. Also 3 Chihuahuas puppies, 8 wks. old. 2100 McKernan Dr. Just south of I-94 on M-52. Phone 475-7845.

WANTED—Outside rabbit kennel in good condition. 475-5577

HELP WANTED—Young man to chase parts, make deliveries, wash cars, etc. Immediate opening. Call Mr. Brown. Lloyd Bridges Chevrolet, 475-1573.

BRIDGE SALE—16 ft. sail boat. Phone 475-7081 after 6 p.m.

FOR SALE—1973 Gemini 50 cc mini-bike. Practically new. Ridden 2 days. \$225. Call 475-8540.

MUNICH AUCTION—100 Main St., Munich, Mich. Auction every Sunday, 6 p.m. Danny Fleming, auctioneer.

FREE PUPPIES—Mixed, 2 mos., paper-trained. Call after 5 p.m. 475-8381.

TOMATOES—You pick, \$2 per bu. Corner of M-52 and McKernan Dr., just north of I-94.

FOR SALE by owner—3 bedroom, 2-bath house. Centrally located. 475-8507.

FOR SALE—GE washer and dryer. Also wire pens for rabbits and chickens. Call 475-2056 for appointment.

Girl Scout Council Launches Campaign for Adult Leaders

Men, working women and college students, as well as mothers, for the first time are being actively recruited as Girl Scout troop leaders in a special drive launched today by the Huron Valley Girl Scout Council.

The drive, which is co-ordinated with a national publicity effort by Girl Scouts of the USA out of New York, is using local media to enroll more than 100 new troop leaders. New leaders will work with Girl Scouts ages 7 to 17 in Washtenaw, Livingston, western Wayne and northern Monroe counties. In this area, 12,000 Girl Scouts are organized in 600 troops.

In announcing the drive, Council president, Mrs. Louis Galan, said "We don't want just anybody. We want energetic, intelligent men and women who can help girls grow into happy, resourceful citizens. And we're going to find them."

In addition to troop leaders, the Huron Valley Council is enlisting volunteer Troop Services Directors, adults who recruit, train and assist troop leaders. Resource people who share expertise of any kind, from astronomy to kayaking, with Girl Scout troops at one of two meetings are also being sought.

Over the past two years the Huron Valley Council has been contacted increasingly by men, women and college students seeking to work with Girl Scouts. Today more than a dozen men and working women lead troops in various capacities. In that same period, more than 50 Eastern Michigan University students have led Girl Scout troops and received university field placement credit for their work.

"We have found that the girls love having these people as troop leaders," Mrs. Galan reported. "They provide perspectives and experience that most girls do not ordinarily see in their daily life. And the leaders tell us that working with these girls is stimulating and rewarding."

Card of Thanks

THANK YOU

The family of Miladore R. Liebeck would like to thank friends and neighbors for their kind consideration during our time of loss.

THANK YOU

I would like to thank all the people who helped at Spaulding for Children's Ice Cream Social. A special thanks to Scout Troop 100, 23 and 476, and to all the friends, families and neighbors who made cakes. Thank you very much.

Kathryn S. Donley



TIM GROSS THIRD-PLACE PEN of three Polly's, who bought them for \$159. Onlookers are shown inspecting by Don Harr, manager of Brian Whitley, far left, and Debbie Gross, far right.

Girl Scout Council Launches Campaign for Adult Leaders

Men, working women and college students, as well as mothers, for the first time are being actively recruited as Girl Scout troop leaders in a special drive launched today by the Huron Valley Girl Scout Council.

The drive, which is co-ordinated with a national publicity effort by Girl Scouts of the USA out of New York, is using local media to enroll more than 100 new troop leaders. New leaders will work with Girl Scouts ages 7 to 17 in Washtenaw, Livingston, western Wayne and northern Monroe counties. In this area, 12,000 Girl Scouts are organized in 600 troops.

In announcing the drive, Council president, Mrs. Louis Galan, said "We don't want just anybody. We want energetic, intelligent men and women who can help girls grow into happy, resourceful citizens. And we're going to find them."

In addition to troop leaders, the Huron Valley Council is enlisting volunteer Troop Services Directors, adults who recruit, train and assist troop leaders. Resource people who share expertise of any kind, from astronomy to kayaking, with Girl Scout troops at one of two meetings are also being sought.

Over the past two years the Huron Valley Council has been contacted increasingly by men, women and college students seeking to work with Girl Scouts. Today more than a dozen men and working women lead troops in various capacities. In that same period, more than 50 Eastern Michigan University students have led Girl Scout troops and received university field placement credit for their work.

"We have found that the girls love having these people as troop leaders," Mrs. Galan reported. "They provide perspectives and experience that most girls do not ordinarily see in their daily life. And the leaders tell us that working with these girls is stimulating and rewarding."

Microwave Machine Will Control Weeds

East Lansing—"He could feel the earth tremble as the giant death-machine lumbered toward him. Sickened by the endless popping and crackling caused by the intense heat he stood helplessly paralyzed before the angry executioner."

A passage from a science fiction novel? Hardly. This weed-killer view of its own destruction could occur in any farmer's field with a new machine which uses microwaves to kill weeds.

Dubbed the weed "zapper" by its builder, the new machine may be the answer to the problem of killing weeds without polluting the environment.

Scientists at Michigan State University are testing the zapper's weed killing potential under Michigan weather and soil conditions.

"Microwaves from the zapper cause internal damage to the weed plant or seed which results in death," says Robert Rice, MSU research assistant. "The killing is physical not chemical, so no toxic residue is left in the soil."

"When used properly, the zapper is safer than a microwave oven used for cooking," Rice adds, that the experimental prototype now being tested at MSU is far too slow. But the manufacturer promises a zapper that will compete with the speed of other weed control methods in the future.

Planting can be done as soon as two hours after the soil has been zapped. "With the zapper, we hope to offer the farmer an alternative to herbicides and soil sterilants for soil pest control," Rice said.

Because the zapper leaves the soil virtually pest free, substantial increases in crop yield have been recorded by the U.S. Department of Agriculture. For example cantaloupes and onions planted in "zapped" soil yielded from 35 to 60 percent more produce over plants in hand-weeded plots—and even more over chemically treated soil.

The zapper has an automatic shut-off which cuts the power when it senses a dangerous level of microwaves. Other advantages are up to 12 months of weed-free soil from each zapping, use in high wind and even rain without worry, and non-polluting and instant planting features.

"The zapper will probably have to be offered as a service for the time being because cost of the machines is so high," says Rice. "Hopefully, the cost can be lowered through more research. The price of the first microwave oven was \$1,500, but now they are less than a third of that."

BOWLING

Hi Point Mixed Standings as of Aug. 28

	W	L
Korki's	33	
Rowe Plumbing	30	
4 D's	22	
Zap	21	
Hit & Missers	20	
Leutheuser's Restaurant	20	
River Rats	16	
Heavy Traffic	16	
Alley Runners	15	
Dexter Gear & Spline	14	
Flat Tires	6	
Ding-a-Lings	3	

High women's games, 150 and over: M. Scott, 172; G. DeSmith, 163, 158; P. Patterson, 152; W. Landwehr, 168; M. Barth, 172, 162; B. Carpenter, 157; K. Schuman, 153, 152; S. Walton, 156, 174; C. Teachworth, 163, 153; P. Scherdt, 157, 176; C. Klapperich, 157; J. Krasnan, 155, 183.

High women's series, 425 and over: G. DeSmith, 447; W. Landwehr, 432; M. Barth, 465; K. Schuman, 452; S. Walton, 474; C. Teachworth, 435; P. Scherdt, 471; J. Krasnan, 470.

High men's games, 160 and over: M. Fox, 177; G. Steers, 173; W. Beuerle, 167; W. Teachworth, 187, 200; H. Morton, 177, 175.

High men's series, 450 and over: G. Steers, 463; W. Beuerle, 454; W. Teachworth, 543; H. Morton, 496.

NEW TEACHERS

Join South School Faculty

Three new teachers have been hired to round out the faculty at South school this year. The fourth grade students met two of the new faces yesterday when school began.

Two male teachers, James Tichnor, and Ronald Loacz, will be teaching fourth grade this year. Tichnor comes from St. Joseph and is a graduate of Hope College where he received his degree this year.

Ronald Loacz is a graduate of Eastern Michigan University. He has had three years teaching experience at Unionville. He is a native of Lincoln Park.

The one female addition to the faculty is Jacquelyn Haley who will be teaching third grade students. A graduate of the University of Michigan this year, she hails from Birmingham.

CHelsea VILLAGE COUNCIL PROCEEDINGS

Regular Session September 4, 1973

This meeting was called to order at 7:30 p.m. by President Fuks. Present: President Fuks, Administrator Weber, Clerk Keezer, Trustees: Wood, Boylan, Pennington, Dmoch, Johnson and Borton.

Others present: John Stepp, Mrs. Beatrice Pearsall, Carl Kidd, Police Chief Meranuck, William Wade, Donald Baldwin, Roy Russell, Jim Andrus, Norman Roeske, Len Hutchinson, Walter Brown, Bruce Galbraith, Mrs. Ann Schaffner, Mr. and Mrs. Gerald Ringe, Robert Riemenschneider, Tom Edler and Charles Burgess.

A discussion was held with Mrs. Pearsall regarding the street light in front of her house on Sycamore Street. Administrator Weber will investigate the matter.

A discussion was held with representatives from the Department of Natural Resources regarding the use of the Village Sanitary Landfill. No action was taken at this time.

A discussion was held with representatives from the Recreation Council regarding the tennis courts under construction at the North school.

Motion by Dmoch, supported by Borton, to appropriate \$1,500.00 from the General Contingency Fund to the Recreation Capital Outlay Fund, and transfer the remainder of the salary budget of the Recreation Fund as of September 4, 1973 to the Recreation Capital Outlay Fund. Roll Call: Yeas—Borton, Johnson, Pennington, Dmoch, Boylan, Nays—Wood. Motion carried.

Request was received from North American Rockwell Corporation for a variance from Section 3.05, Sub-Section C.1. of Ordinance No. 55 which would allow them to construct a parking lot with a portion of the lot within the 30 foot transition strip specified by the Ordinance. The request was directed to the Planning Commission for appropriate action.

A request was received from IPSCO for rezoning a 7 1/2 acre parcel of land from Agricultural to Industrial. The parcel is located north of the Penn Central tracks at the end of Monroe Street.

Motion by Wood, supported by Boylan, to hold a special meeting on September 20, 1973 and to conduct a public hearing regarding this matter. Roll call: Yeas all. Motion carried.

Request from Peter Flintoft for a variance from Section 3.01 of Ordinance No. 55. The request was forwarded to the Planning Commission for further action.

Motion by Wood, supported by Dmoch, to authorize the Village Administrator to sign in behalf

JAMES TICHNOR



RONALD LOACZO

Use a tender touch when you select fresh fruits. Bruising and damage caused when fruits are handled carelessly cause losses that we as consumers pay for in the long run.

Since Project HOPE assumed management of Sage Memorial Hospital at Ganado, Ariz., in the 16million acre Navajo Reservation, nearly all positions at the hospital have been filled by qualified Indian personnel.

If you fancy using a ruffled valance or café curtains with your window shade, you can co-ordinate them into a full-fledged window treatment by adding a narrow, shirred-fabric border to the shade with special, snap-on tape. The ruffle can be removed for washing—and the vinyl-coated shade will need only a wipe-over with a damp cloth.

Telephone Your Club News To 475-1371

GROHNET'S FARM MARKET

Corner of Waterloo & Bush Rds., Chelsea  
OPEN EVERY DAY, 9 a.m. to 9 p.m.  
ASSORTED FRUITS & VEGETABLES - BLACK WALNUTS  
WOOD - BLACK DIRT ON ORDER

Fruit, Tomatoes Now Ready  
Taking orders now for canning and freezing.  
CALL 475-8551

LYNDON TOWNSHIP PLANNED USE REPORT Of Federal Revenue Sharing Funds

The government of Lyndon Township plans to expend its revenue sharing allocation of the entitlement period beginning July 1, 1973 and ending June 30, 1974 in the following manner based upon an estimated total of \$6,952. (Account No. 23-3-981-998). Form No. 3229 filed with Department of the Treasury, Office of Revenue Sharing, 1900 Pennsylvania Avenue N.W., Washington, D.C. 20226.

(K) EXECUTIVE PROPOSAL. Check this block if this plan is based on an executive proposal.		(M) TAXES. In which of the following manners is it expected that the availability of Revenue Sharing Funds will affect the tax levels of your jurisdiction? Check as many as apply.	
(L) DEBT. How will the availability of revenue sharing funds affect the borrowing requirements of your jurisdiction?		<input type="checkbox"/> Will enable reducing rate of major tax <input type="checkbox"/> Will prevent increase in rate of major tax <input type="checkbox"/> Will prevent enacting a new major tax <input type="checkbox"/> Will reduce amount of rate increase of a major tax <input checked="" type="checkbox"/> No effect on tax levels <input type="checkbox"/> Too soon to predict effect	
<input type="checkbox"/> Avoid Debt Increase <input type="checkbox"/> Lessen Debt Increase		<input checked="" type="checkbox"/> No Effect <input type="checkbox"/> Too soon to predict effect	

OPERATING/MAINTENANCE EXPENDITURES				
Priority Expenditure Category (A)	Planned Expenditures (B)	Percent Planned For Maintenance of Existing Services (C)	Percent Planned For New or Expanded Services (D)	
1 Public Safety (Local Roads)	\$4,862.00	100%	—%	
2 Environmental Protection	—	—%	—%	
3 Public Transportation	—	—%	—%	
4 Health	—	—%	—%	
5 Recreation	\$500.00	100%	—%	
6 Libraries	\$400.00	100%	—%	
7 Social Services for Aged & Poor	—	—%	—%	
8 Financial Administration	\$200.00	—%	100%	
9 Total Planned Operating/Maintenance Expenditures	\$5,962.00			
(N) CERTIFICATION (Please Read Instruction "F")				
The news media have been advised that a complete copy of this report has been published in a local newspaper of general circulation. I have records documenting the contents of this report and they are open for public and news media scrutiny.				
I assure the Secretary of the Treasury that the statutory provisions listed in Part G of the Instructions accompanying this report will be complied with by this recipient government with respect to the entitlement funds reported herein.				
Thomas C. Lewis Supervisor				
Date Published: Thursday, September 6, 1973. Name of Newspaper: The Chelsea Standard.				

CAPITAL EXPENDITURES				
Purpose (E)	Planned Expenditures (F)	Equipment (G)	Construction (H)	Land Acquisition (I)
10 Multi-Purpose and General Govt.	—	—%	—%	—%
11 Education	—	—%	—%	—%
12 Health	—	—%	—%	—%
13 Transportation	—	—%	—%	—%
14 Social Development	—	—%	—%	—%
15 Housing & Community Development	—	—%	—%	—%
16 Economic Development	—	—%	—%	—%
17 Environmental Conservation	—	—%	—%	—%
18 Public Safety	—	—%	—%	—%
19 Recreation Culture	—	—%	—%	—%
20 Township Hall Imp.	\$1,000.00	—%	100%	—%
21 Other (Specify)	—	—%	—%	—%
22 Other (Specify)	—	—%	—%	—%
23 Total Planned Capital Expenditures	\$1,000.00			



## Services in Our Churches

**ST. JOHN'S LUTHERAN CHURCH**  
The Rev. J. William Todd, Pastor  
Every Sunday—  
9:30 a.m.—Worship service.  
10:30 a.m.—Sunday school.  
Every Tuesday—  
7:00 p.m.—Choir rehearsal.  
Every Thursday—  
6:00 p.m.—Children's Choir rehearsal.  
First Wednesday—  
9:30 a.m.—Jane Circle.  
Second Tuesday—  
U.M.W.C.S.

**ST. THOMAS LUTHERAN CHURCH**  
The Rev. J. William Todd, Pastor  
Every Sunday—  
9:30 a.m.—Worship service.  
10:30 a.m.—Sunday school.  
Every Tuesday—  
7:00 p.m.—Choir rehearsal.  
Every Thursday—  
6:00 p.m.—Children's Choir rehearsal.  
First Wednesday—  
9:30 a.m.—Jane Circle.  
Second Tuesday—  
U.M.W.C.S.

**ST. MARY CATHOLIC CHURCH**  
The Rev. J. William Todd, Pastor  
Every Sunday—  
9:30 a.m.—Worship service.  
10:30 a.m.—Sunday school.  
Every Tuesday—  
7:00 p.m.—Choir rehearsal.  
Every Thursday—  
6:00 p.m.—Children's Choir rehearsal.  
First Wednesday—  
9:30 a.m.—Jane Circle.  
Second Tuesday—  
U.M.W.C.S.

**VILLAGE UNITED METHODIST CHURCH OF WATERLOO**  
The Rev. J. William Todd, Pastor  
Every Sunday—  
9:30 a.m.—Worship service.  
10:30 a.m.—Sunday school.  
Every Tuesday—  
7:00 p.m.—Choir rehearsal.  
Every Thursday—  
6:00 p.m.—Children's Choir rehearsal.  
First Wednesday—  
9:30 a.m.—Jane Circle.  
Second Tuesday—  
U.M.W.C.S.

**WATERLOO FIRST UNITED METHODIST CHURCH**  
The Rev. J. William Todd, Pastor  
Every Sunday—  
9:30 a.m.—Worship service.  
10:30 a.m.—Sunday school.  
Every Tuesday—  
7:00 p.m.—Choir rehearsal.  
Every Thursday—  
6:00 p.m.—Children's Choir rehearsal.  
First Wednesday—  
9:30 a.m.—Jane Circle.  
Second Tuesday—  
U.M.W.C.S.

**MAUSOLEUMS • MONUMENTS**  
BRONZE TABLETS • MARKERS

**BECKER MEMORIALS**  
6833 Jackson Road  
ANN ARBOR, MICHIGAN

**BECKER MEMORIALS**  
6833 Jackson Road  
ANN ARBOR, MICHIGAN

## BOWLERS! FALL LEAGUES NOW FORMING

**MIXED LEAGUE . . . Thurs., 9:00 p.m.**  
Needed - Couples and Teams  
**WOMEN'S LEAGUE . . . Thurs., 9:00 p.m.**  
Needed - Individuals and Teams  
**MEN'S NITE OWL LEAGUE - Mon., 9 p.m.**  
Needed - Individuals and Teams  
**JUNIOR BOWLERS . . . Ages 7-17 yrs.**  
Meeting 10:00 a.m., Sat., Sept. 1

**18 Astroline Lanes - Billiards & Air Hockey**  
MICHIGAN STATE LOTTERY TICKET AGENT

**CHELSEA LANES, Inc.**  
PHONE 475-8141  
1189 M-52 CHELSEA

**REAL ESTATE ADVICE**  
RESIDENTIAL PROPERTIES  
COMMERCIAL - INDUSTRIAL  
FARMS  
VACANT LANDS  
**SPEAR & ASSOCIATES, INC.**  
REALTORS  
122 W. MAIN STREET  
475-8366  
ELLIS PRATT  
475-8562

**CONGREGATIONAL CHURCH**  
The Rev. J. William Todd, Pastor  
Every Sunday—  
9:30 a.m.—Worship service.  
10:30 a.m.—Sunday school.  
Every Tuesday—  
7:00 p.m.—Choir rehearsal.  
Every Thursday—  
6:00 p.m.—Children's Choir rehearsal.  
First Wednesday—  
9:30 a.m.—Jane Circle.  
Second Tuesday—  
U.M.W.C.S.

**ST. JOHN'S LUTHERAN CHURCH**  
The Rev. J. William Todd, Pastor  
Every Sunday—  
9:30 a.m.—Worship service.  
10:30 a.m.—Sunday school.  
Every Tuesday—  
7:00 p.m.—Choir rehearsal.  
Every Thursday—  
6:00 p.m.—Children's Choir rehearsal.  
First Wednesday—  
9:30 a.m.—Jane Circle.  
Second Tuesday—  
U.M.W.C.S.

**ST. MARY CATHOLIC CHURCH**  
The Rev. J. William Todd, Pastor  
Every Sunday—  
9:30 a.m.—Worship service.  
10:30 a.m.—Sunday school.  
Every Tuesday—  
7:00 p.m.—Choir rehearsal.  
Every Thursday—  
6:00 p.m.—Children's Choir rehearsal.  
First Wednesday—  
9:30 a.m.—Jane Circle.  
Second Tuesday—  
U.M.W.C.S.

**VILLAGE UNITED METHODIST CHURCH OF WATERLOO**  
The Rev. J. William Todd, Pastor  
Every Sunday—  
9:30 a.m.—Worship service.  
10:30 a.m.—Sunday school.  
Every Tuesday—  
7:00 p.m.—Choir rehearsal.  
Every Thursday—  
6:00 p.m.—Children's Choir rehearsal.  
First Wednesday—  
9:30 a.m.—Jane Circle.  
Second Tuesday—  
U.M.W.C.S.

**WATERLOO FIRST UNITED METHODIST CHURCH**  
The Rev. J. William Todd, Pastor  
Every Sunday—  
9:30 a.m.—Worship service.  
10:30 a.m.—Sunday school.  
Every Tuesday—  
7:00 p.m.—Choir rehearsal.  
Every Thursday—  
6:00 p.m.—Children's Choir rehearsal.  
First Wednesday—  
9:30 a.m.—Jane Circle.  
Second Tuesday—  
U.M.W.C.S.

**MAUSOLEUMS • MONUMENTS**  
BRONZE TABLETS • MARKERS

**BECKER MEMORIALS**  
6833 Jackson Road  
ANN ARBOR, MICHIGAN

**BECKER MEMORIALS**  
6833 Jackson Road  
ANN ARBOR, MICHIGAN

## BOWLERS! FALL LEAGUES NOW FORMING

**MIXED LEAGUE . . . Thurs., 9:00 p.m.**  
Needed - Couples and Teams  
**WOMEN'S LEAGUE . . . Thurs., 9:00 p.m.**  
Needed - Individuals and Teams  
**MEN'S NITE OWL LEAGUE - Mon., 9 p.m.**  
Needed - Individuals and Teams  
**JUNIOR BOWLERS . . . Ages 7-17 yrs.**  
Meeting 10:00 a.m., Sat., Sept. 1

**18 Astroline Lanes - Billiards & Air Hockey**  
MICHIGAN STATE LOTTERY TICKET AGENT

**CHELSEA LANES, Inc.**  
PHONE 475-8141  
1189 M-52 CHELSEA

**REAL ESTATE ADVICE**  
RESIDENTIAL PROPERTIES  
COMMERCIAL - INDUSTRIAL  
FARMS  
VACANT LANDS  
**SPEAR & ASSOCIATES, INC.**  
REALTORS  
122 W. MAIN STREET  
475-8366  
ELLIS PRATT  
475-8562

**NORTH LAKE UNITED METHODIST CHURCH**  
The Rev. J. William Todd, Pastor  
Every Sunday—  
9:30 a.m.—Worship service.  
10:30 a.m.—Sunday school.  
Every Tuesday—  
7:00 p.m.—Choir rehearsal.  
Every Thursday—  
6:00 p.m.—Children's Choir rehearsal.  
First Wednesday—  
9:30 a.m.—Jane Circle.  
Second Tuesday—  
U.M.W.C.S.

**NORTH SHARON COMMUNITY BIBLE CHURCH**  
Sylvan and Washburn Rds.  
The Rev. William Enola, Pastor  
Every Sunday—  
10:00 a.m.—Sunday school.  
(Nursery will be available.) Junior church classes.  
11:00 a.m.—Worship service.  
6:00 p.m.—Senior High Youth meeting. Youth Choir.  
7:00 p.m.—Evening worship service. (Nursery available.)  
Every Wednesday—  
7:00 p.m.—Bible study and prayer meeting. (Nursery available.) Bus transportation available: 428-7222.

**ST. BARNABAS EPISCOPAL CHURCH**  
26350 Old US-12  
The Rev. C. Walton Fitch, Vicar  
Telephone 428-0816  
Every Sunday—  
9:15 a.m.—Holy Communion, first, third and fifth Sundays.  
9:15 a.m.—Morning Prayer, second and fourth Sundays.

**BAHA'I FIRESIDE**  
Every Thursday—  
8:00 p.m.—At the home of Toby Peterson, 705 S. Main St. Anyone wishing to learn about the Baha'i faith is welcome.

**FIRST CHURCH OF CHRIST, SCIENTIST**  
1863 Washtenaw Ave., Ann Arbor  
Every Sunday—  
10:30 a.m.—Sunday school; morning service.

**SALEM GROVE UNITED METHODIST CHURCH**  
3320 Notten Rd.  
The Rev. J. William Todd, Pastor  
Every Sunday—  
10:00 a.m.—Sunday school.  
11:00 a.m.—Worship service.

**METHODIST HOME CHAPEL**  
The Rev. R. L. Clemons, Chaplain  
Every Sunday—  
8:45 a.m.—Worship service.

**CHELSEA MEDICAL CENTER**  
Every Other Wednesday—  
1:30 p.m.—Worship service.

**IMMANUEL BIBLE CHURCH**  
145 E. Summit St.  
The Rev. LeRoy Johnson, Pastor  
Every Sunday—  
8:45 a.m.—Sunday school, nursery provided.  
11:00 a.m.—Morning worship, nursery provided.  
Every Wednesday—  
7:30 p.m.—Family hour, prayer meeting and Bible study.  
First Sunday of Month—  
7:00 p.m.—Communion service.

**CHURCH OF CHRIST**  
13861 Old US-12, East  
David A. Rushlow  
Every Sunday—  
10:00 a.m.—Church school.  
14:00 a.m.—Worship service.  
Nursery will be available.  
6:00 p.m.—Worship service.  
Every Wednesday—  
7:30 p.m.—Bible Study.

**CHELSEA BAPTIST CHURCH**  
337 Wilkinson  
The Rev. James Stacey, Pastor  
Every Sunday—  
9:45 a.m.—Sunday school.  
11:00 a.m.—Worship service.  
Nursery care available during all services.  
6:00 p.m.—Junior and Senior Baptist Youth Fellowship.  
7:00 p.m.—Evening service.  
Every Wednesday—  
7:00 p.m.—Bible study and prayer meeting.

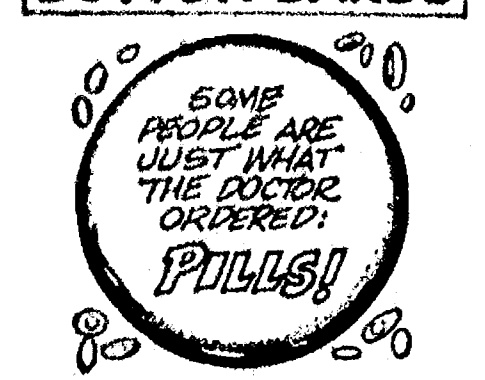
**FIRST UNITED PRESBYTERIAN CHURCH**  
Unadilla  
The Rev. T.H. Liang  
Every Sunday—  
9:45 a.m.—Sunday school.  
11:00 a.m.—Worship service.  
Every Tuesday—  
8:00 p.m.—Choir practice.

## LAFF OF THE WEEK



"I'll take the beef SHANK!"

## BUTTON BARBS



Have Lunch Today  
at the  
**MARK IV LOUNGE**  
PLEASANT - AIR-CONDITIONED  
ADULTS

**from HISTORY'S SCRAPBOOK**  
DATES AND EVENTS FROM YESTERYEARS  
On August 31, 1965, President Franklin D. Roosevelt signed the National Labor Relations Act of 1935.  
Germany invaded Poland on September 1, 1939.  
The Great Fire of London began on September 2, 1666.  
The Treaty of Paris was signed on September 3, 1763, ending the Revolutionary War.  
The Island of Manhattan was discovered by Henry Hudson on September 4, 1609.

**FARMERS' SUPPLY CO.**  
PHONE 475-1777

**FEEDS**  
Faster gains from better  
Calves get growing and gaining faster, on our balanced, fortified Calf Feed . . . enriched with needed vitamins, minerals.

Complete feeding rations for all your livestock, poultry.

**CHRYSLER Plymouth**

# Don't buy any car till you compare with ours.

**We'll show you how a beautifully built car can make your life easier.**  
(P.S. It runs on regular gas.)

If you're in the market for a new car, c'mon in and get a load of our year-end deal on a Plymouth Fury. Strong, smooth-riding, comfortable, reliable—this is the most beautiful Fury we've ever offered.

Fury's got it all—and it runs on regular gas! Here's another plus: Fury offers electronic ignition as standard. Now's a great time to buy Fury—at a year-end price. See us now!

**C'mon in.**  
It's clean-up time.

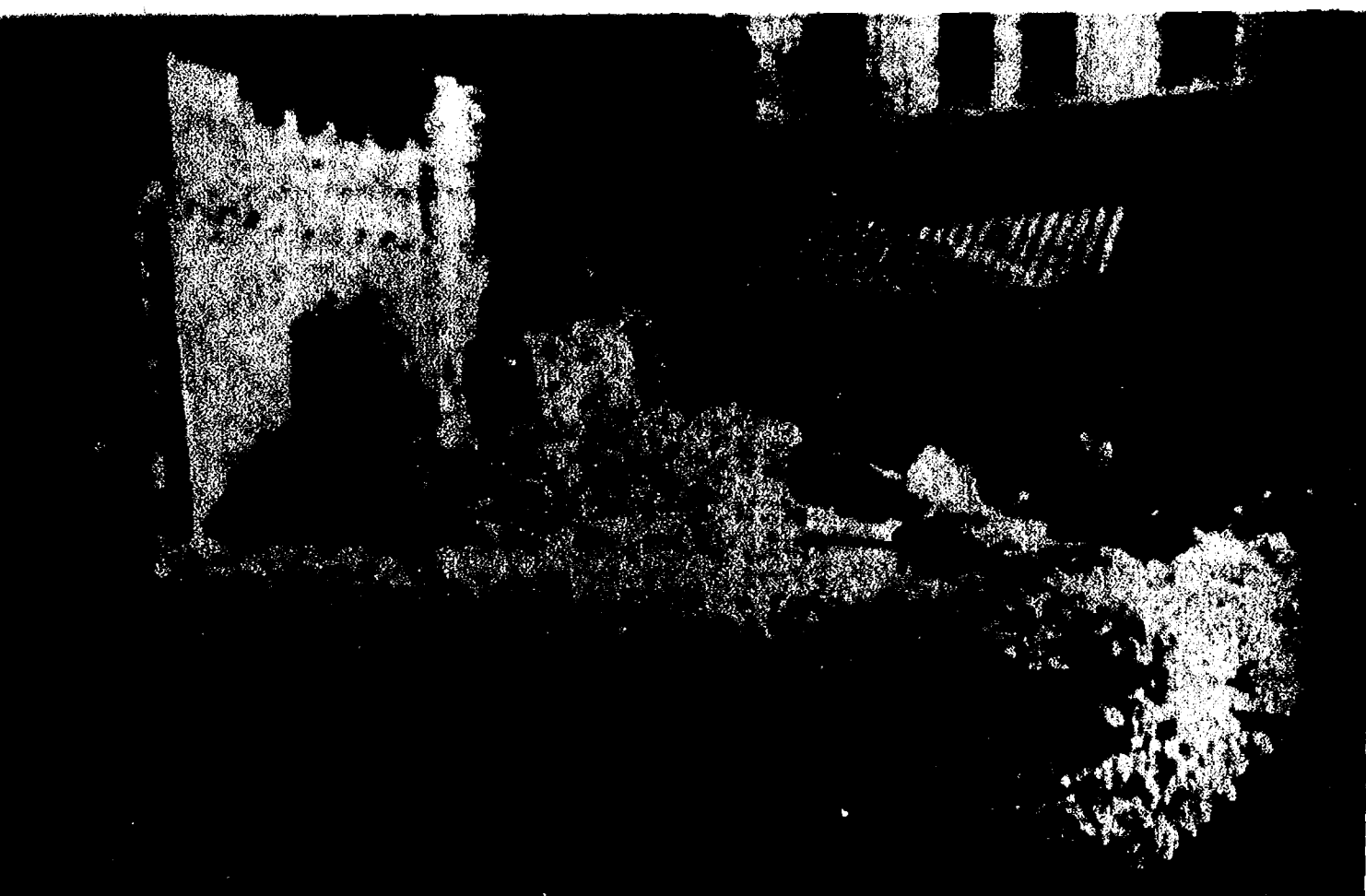
## VILLAGE MOTOR SALES, INC.

1165 MANCHESTER ROAD  
CHELSEA, MICHIGAN





CHS SOPHOMORE CLASS has good taste, too, according to the Fair judges, as they awarded the Sophomore Class float, "Chelsea Has Good Taste," a third place in the Junior Division. Giant



ON A SUNNY DAY IN AUGUST, the Freshman Class dreams that "It's Possible." Freshman queen Robbie Navin enjoys the view down Main St. from her seat on the class float.



SMILING FACES among members of the Terrific Tailors 4-H Club and a smiling face on the back of the 4-H Club sign gave a good indication of the spirit of the youngsters who manned this float during Saturday's Chelsea Fair parade.

A special medical unit for stroke patients has been opened at the Veterans Administration's West Haven, Conn., hospital.

Michigan's public roads and streets would circle the equator more than four and a half times.

**CHELSEA FINANCE CORP.**  
\$25 to \$1,500  
For Any  
Worthwhile Purpose

See or Call  
**FRANK HILL**  
at 475-8631

111 PARK STREET  
CHELSEA, MICH.

**LARRY'S  
ROADSIDE MARKET**

Now Open Every Day!  
Farm Fresh Fruits and Vegetables  
Bread - Milk - Eggs - Pop

Open 9 a.m. to 9 p.m., 7 days a week

Halfway Between Chelsea and Manchester on M-52.  
1/2 mile south of Grass Lake Rd.

# SUNDAY'S SERMON

## ★ Everyday Religion

How often have you been driving down the road, seen someone pull right out in front of you, and then vent your anger? Probably too often, right? But if you should make the same mistake and pull out in front of someone, thinking there was enough room, you'd complain that he was impatient if he showed any signs of anger. When was the last time you were cool, calm and patient during a traffic jam?

It is at times like this when we need to practice what we preach. How easy and more enjoyable life would be if we would only slow down, remain calm and be patient. After all, what's the big rush we are always in? Where does it lead?

If we would apply our religious beliefs to our everyday lives, and really stand by our convictions, life would surely be more enjoyable, relaxed and fulfilling.

# Personal Notes

Mr. and Mrs. Duane L. Gentner of Hanover Park, Ill., were weekend guests of his parents, Mr. and Mrs. Floyd E. Gentner, 316 Jackson St. Returning with her parents to Hanover Park, was their daughter, Lisa, who had been spending two weeks with her grandparents in Chelsea and her aunt, uncle and cousin, Mr. and Mrs. Ronald F. Gentner and daughter, Tracy, of Ypsilanti.

Be a good neighbor  
**SUPPORT  
OPERATION  
IDENTIFICATION**



See me for complete Operation Identification materials without cost.

**WALLACE WOOD  
G. L. U.**  
105 S. Main, Chelsea  
Phone 475-1511

Identification of personal belongings and household articles can help deter the home burglar. That's why I'm joining local law enforcement officials in urging you to participate in Operation Identification.

STATE FARM INSURANCE COMPANIES  
Home Office: Bloomington, Illinois  
P-7232

# Compact Tractor Pull Results Listed

Those small compact tractors that are so useful around the yard are more powerful than one would think. They showed their stuff Wednesday during the compact tractor pulling contest.

Ladies first showed what they could do in the Powder Puff competition in front of the grandstand. Coming in first was Ann Arbor's Jan Dible driving an Allis-Chalmers tractor that pulled 247 percent of its weight. Bettie Hayden of Grass Lake was next in line on a Cub Cadet which pulled 240 percent of its weight.

Beth Bouillon of Dexter sat atop a Jacobsen and hit 238 percent for third place. Becky Bollinger of Chelsea took fourth with a 225 percent pull. Becky also won the Women's Powder Puff Safe Driver Award which brought her \$8.50.

Next came the men on the seven to nine horsepower lightweight tractors. A Tecumseh man, Gerald Eaton, took first place in that division with a Sears machine that pulled 250 percent. Second was Steve Dible of Saline. His Simplicity tractor pulled 247 percent which would have been enough to take first place in the Powder Puff event.

Ken Dible kept the honors in the family by taking third on his Simplicity. His percentage was 243. Fourth place went to Alden Faunce of Petersburg on a Bolens. He pulled 221 percent.

In the medium weight division, 10 to 11 horsepower tractors tested their strength. Gerald Roberts

of Chelsea was first in that competition on a John Deere that pulled 260 percent. Again a Saline man was in the running. Larry Guenther of Saline rode a Massey-Ferguson to second place after pulling 257 percent.

In third place was Brian Lelinger of Grass Lake who rode a Simplicity that pulled 220 percent of its weight.

James Hayden of Grass Lake and Mike Feldkamp of Dexter tied for fourth place, each pulling 210 percent of the weight of their tractor. Hayden was on a Cub Cadet and Feldkamp was on a Jacobsen.

Heavy weight was the final class in the compact tractor event. Tractors of 12 horse power and up participated in this division.

Taking first was Ron Dible of Ann Arbor on an Allis-Chalmers machine that pulled 290 percent of its weight. In second place was Chelsea's Duane Bollinger on a Simplicity. His percentage was 236.

Brian Fargher of Ann Arbor, also on a Simplicity, was third with 230 percent pulled. Ed Buku, another local man, rode a Jacobsen to fourth place with 179 percent pulled.

The men's safe driver award went to Duane Bollinger. The honor was worth \$14.

Telephone Your Club News  
To 475-1371



CHS SOPHOMORE CLASS has good taste, too, according to the Fair judges, as they awarded the Sophomore Class float, "Chelsea Has Good Taste," a third place in the Junior Division. Giant

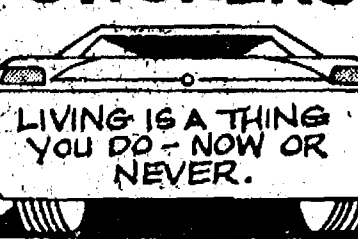
# SEASONALLY-ADJUSTED

Though most ice cream is consumed in the summer months in the United States, the best month for sales of home ice cream freezers is December. For years the freezers have remained popular as Christmas gifts.

To remove rubber heel marks from floors, wipe the spots with kerosene, turpentine, mineral spirits or floor oil.

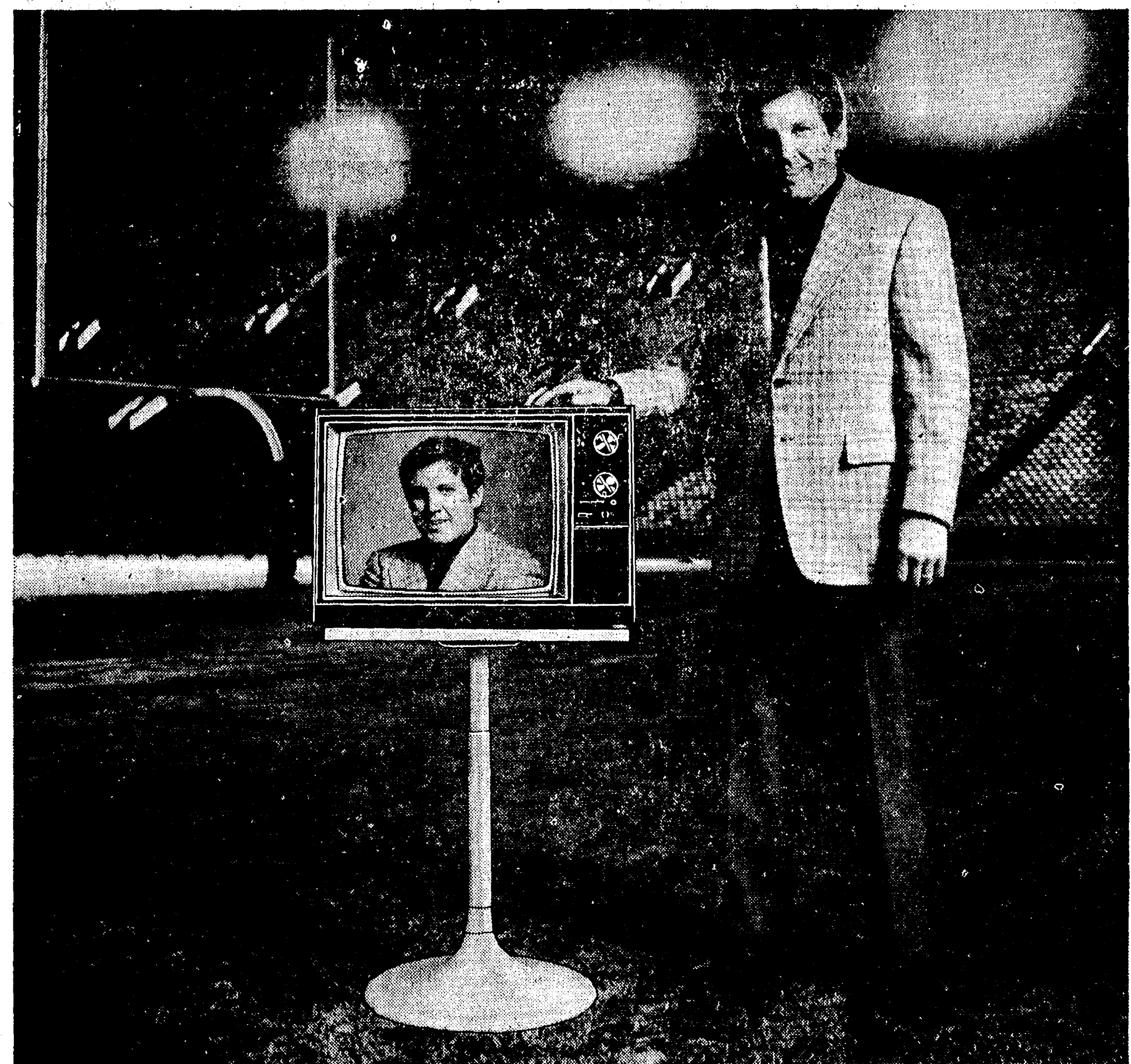
Kidney disease is a primary or secondary cause of one out of every five deaths in Michigan. The Kidney Foundation of Michigan, a United Way of Michigan (UWM) service, helps kidney patients, directly through a Kidney Loan Closet, Artificial Kidney Centers, Clinics and Drug Banks. UWM is financed by contributions to 150 United Way campaigns in Michigan.

# BUMPER STICKERS



**Magnavox Videomatic...the Color TV that  
adjusts its own picture to changing room light  
automatically.**

**And Magnavox lit up the Los Angeles Coliseum to prove it!**



Simulated TV picture.

Magnavox—it actually adjusts its own picture to changing light conditions—automatically. Constantly. So you enjoy a bright, sharp, true-color picture. Any room. Any light. Any time. What a difference!

It's all part of the exclusive Videomatic Color System from Magnavox—and here's more:

Revolutionary new in-line picture tube. A "first" in 19" (measured diagonally) color TV—and Magnavox makes it in 17" (measured diagonally) too.

The new in-line tube utilizes fine phosphor lines instead of conventional dots...so you get a truly clean, sharp color picture in big screen portables.

Reliable 100% solid-state chassis. No chassis tubes to burn out. Plug-in, plug-out modular circuits for easy on-the-spot repairs (a Magnavox Color TV would rather stay at home than in the shop).

One-button tuning. The most completely automatic one-button system you can buy.



One-button Videomatic Color TV from Magnavox. Priced from

**\$429<sup>95</sup>**

**What a difference watching a Magnavox**

**HEYDLAUFF'S**

113 North Main St., Chelsea

Phone 475-1221